

See pages 3 & 7 for more addressing information.

SAUNDERS HAVILL GROUP PTY LTD (ACN 144 972 949) hereby certify that the land comprised in this plan was surveyed by the corporation, by Florencia Maillen STRICKER, surveying graduate, for whose work the corporation accepts responsibility, under the supervision of Michael KLEINE, cadastral surveyor, and that the plan is accurate, that the said survey was performed in accordance with the Survey and Mapping Infrastructure Act 2003 and Surveyors Act 2003 and associated Regulations and Standards and that the said survey was completed on 21/11/2024



M. Kleine
Authorised Signatory
[Signature]
Authorised Signatory
Date: 29-11-2024

Plan of Lots 899, 4108-4122, 4272-4274, 4294, 4295, 4319-4347, 4474-4477 & 9003 and Easements Q-T & V in Lot 9003

Cancelling Lot 9003 on SP341938

LOCAL GOVERNMENT: **LOGAN CITY**

LOCALITY: **GREENBANK**

Meridian: **MGA (Zone 56) vide PSMs**

Survey Records: **No**

Scale: **1:7500**
Format: **STANDARD**



SP344914

**WARNING : Folded or Mutilated Plans will not be accepted.
Plans may be rolled.
Information may not be placed in the outer margins.**

(Dealing No.)

4. Lodged by

(Include address, phone number, email, reference, and Lodger Code)

Existing		Created		
Title Reference	Description	New Lots	Road	Secondary Interests
To Issue from 51362014	Lot 9003 on SP341938	899, 4108-4122, 4272-4274, 4294, 4295, 4319-4347, 4474-4477 & 9003	New Rd	Emts Q-T & V

ENCUMBRANCE EASEMENT ALLOCATIONS

Easement	Lots to be Encumbered
601266225 (Emts A & B on RP214312)	9003
712220840 (Emt X on SP207516)	9003
712329523 (Emt Y on SP207517)	9003
720314657 (Emts G & H on SP312154)	9003
721023221 (Emts J & K on SP327528)	9003
721476938 (Emt D on SP331504)	9003
721476939 (Emt AA on SP331504)	9003
721476940 (Emt BB on SP331504)	9003
722337718 (Emt Y on SP338104)	9003
722621066 (Emt H on SP334725)	9003
722721358 (Emt AC on SP334746)	9003
723430277 (Emt L on SP344892)	9003
723430278 (Emt M on SP344892)	9003
723563305 (Emt P on SP344913)	4294

BENEFIT EASEMENT ALLOCATIONS

Easement	Lots Fully Benefited	Lots Partially Benefited
719454124 (Emt E on SP307780)		9003

EXISTING ADMINISTRATIVE ADVICE ALLOCATIONS

Administrative Advice	Lots to be Encumbered
719945618 (Veg Notice)	899, 4108-4122, 4272-4274, 4294, 4295, 4319-4347, 4474-4477 & 9003

Part of 723430277, as far as it relates to Emt U on SP344892, to be surrendered prior to registration of this plan.

723563306 (Emt N on SP344913) to be surrendered prior to registration of this plan.

723563307 (Emt O on SP344913) to be surrendered prior to registration of this plan.

9003	Pors 434 & Por 436
899, 4108-4122, 4272-4274, 4294, 4295, 4319-4347 & 4474-4477	Por 434
Lots	Orig

2. Orig Grant Allocation :

3. References :

Dept File :
Local Govt :
Surveyor : 7598-PI0.4 Survey Advice: 2018-0912

5. Passed & Endorsed :

By : SAUNDERS HAVILL GROUP PTY LTD
Date : 29-11-2024
Signed : *m. plene*
Designation : Endorsing Officer

6. Building Format Plans only.

I certify that :
* As far as it is practical to determine, no part of the building shown on this plan encroaches onto adjoining lots or road;
* Part of the building shown on this plan encroaches onto adjoining * lots and road

.....
Cadastral Surveyor/Director* Date
*delete words not required

7. Lodgement Fees :

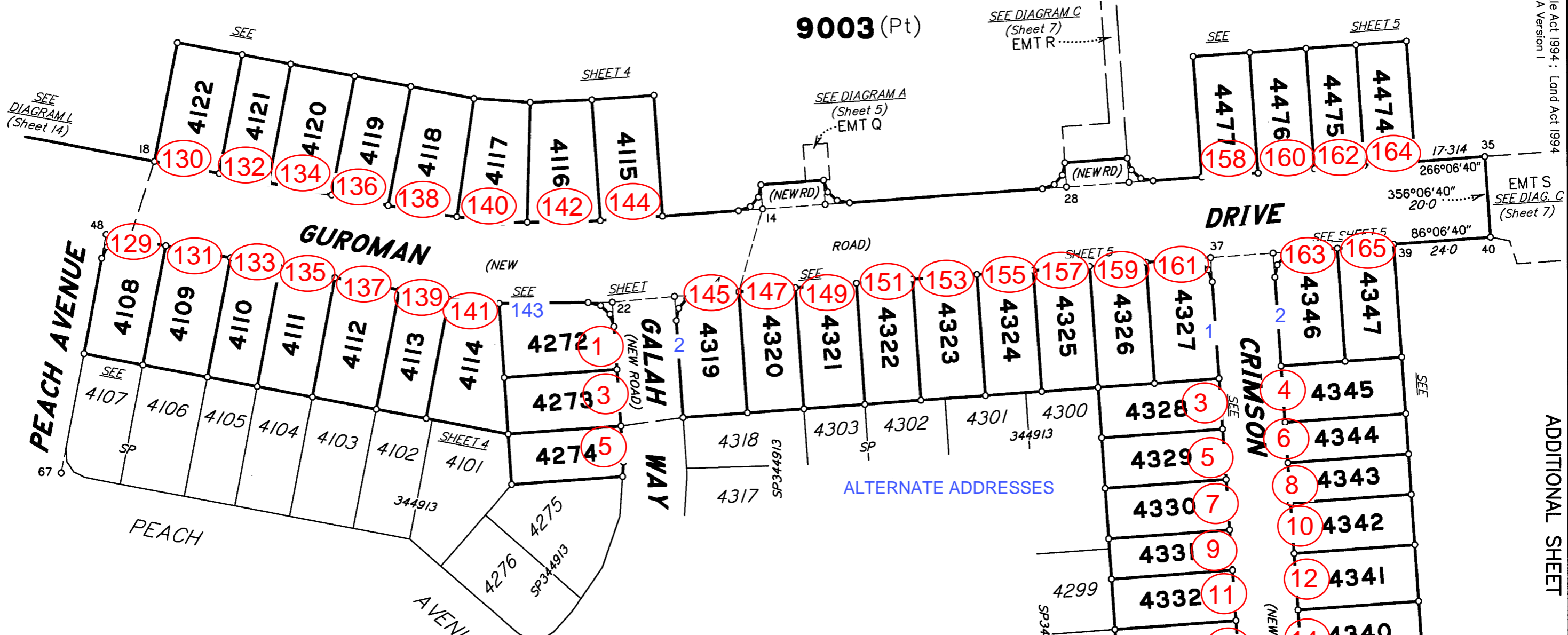
Survey Deposit \$
Lodgement \$
.....New Titles \$
Photocopy \$
Postage \$
TOTAL \$

8. Insert Plan Number

SP344914

Lots 4108-4122, 4319-4327, 4346, 4347, 4474-4477 addressed off Guroman Drive GREENBANK QLD 4124

9003 (Pt)

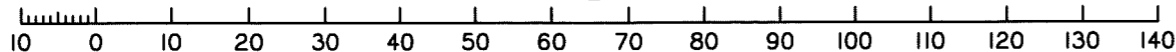


Lots 4328-4345 addressed off Crimson Street GREENBANK QLD 4124

Lots 4294, 4295 addressed off Peach Avenue GREENBANK QLD 4124



Scale 1:1000 - Lengths are in metres.



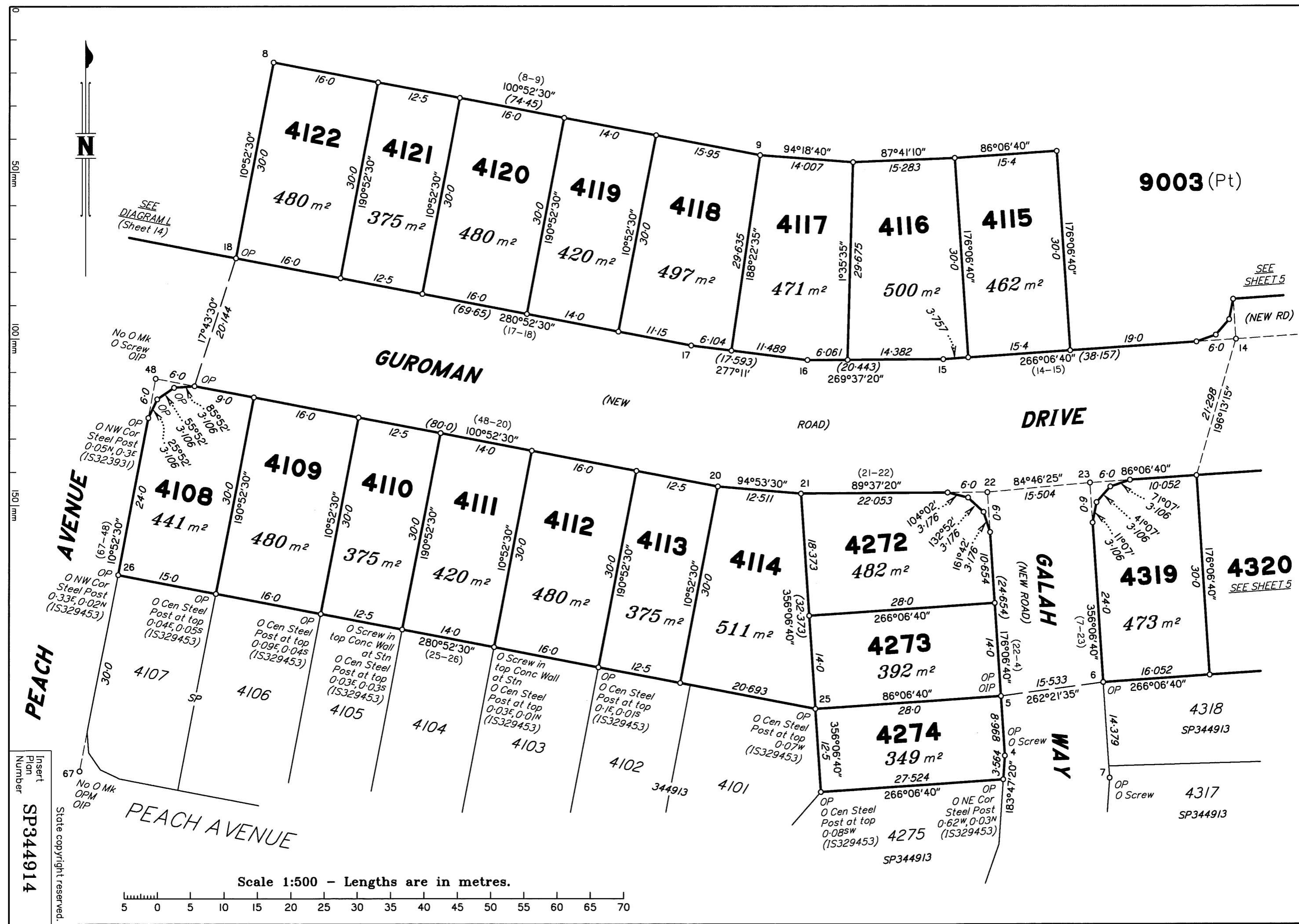
Insert Plan Number SP344914

State copyright reserved.

Land Title Act 1994 : Land Act 1994 Form 21A Version 1

ADDITIONAL SHEET

Sheet 3 of 15



SEE
DIAGRAM L
(Sheet 14)

SEE
SHEET 5

SEE SHEET 5

No O Mk
O Screw
OIP

O NW Cor
Steel Post
0.05N, 0.3E
(15323931)

O NW Cor
Steel Post
0.33E, 0.02N
(15329453)

O Cen Steel
Post at top
0.04E, 0.05S
(15329453)

O Cen Steel
Post at top
0.09E, 0.04S
(15329453)

O Screw in
top Conc Wall
at Stn
O Cen Steel
Post at top
0.03E, 0.03S
(15329453)

O Screw in
top Conc Wall
at Stn
O Cen Steel
Post at top
0.03E, 0.01N
(15329453)

O Cen Steel
Post at top
0.1E, 0.01S
(15329453)

O Cen Steel
Post at top
0.07W
(15329453)

O Cen Steel
Post at top
0.08SW
(15329453)

O NE Cor
Steel Post
0.62W, 0.03N
(15329453)

No O Mk
OPM
OIP

O Screw

O Screw

PEACH AVENUE

GUROMAN
(NEW ROAD)

DRIVE

GALAH
(NEW ROAD)

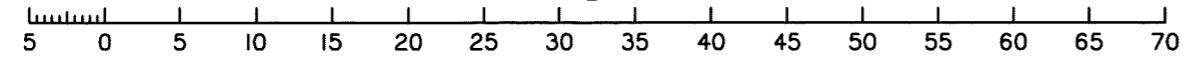
WAY

9003 (Pt)

SP344913

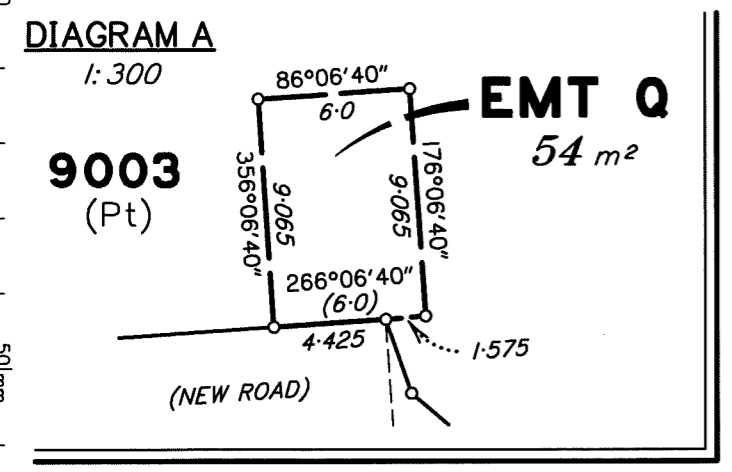
SP344913

Scale 1:500 - Lengths are in metres.

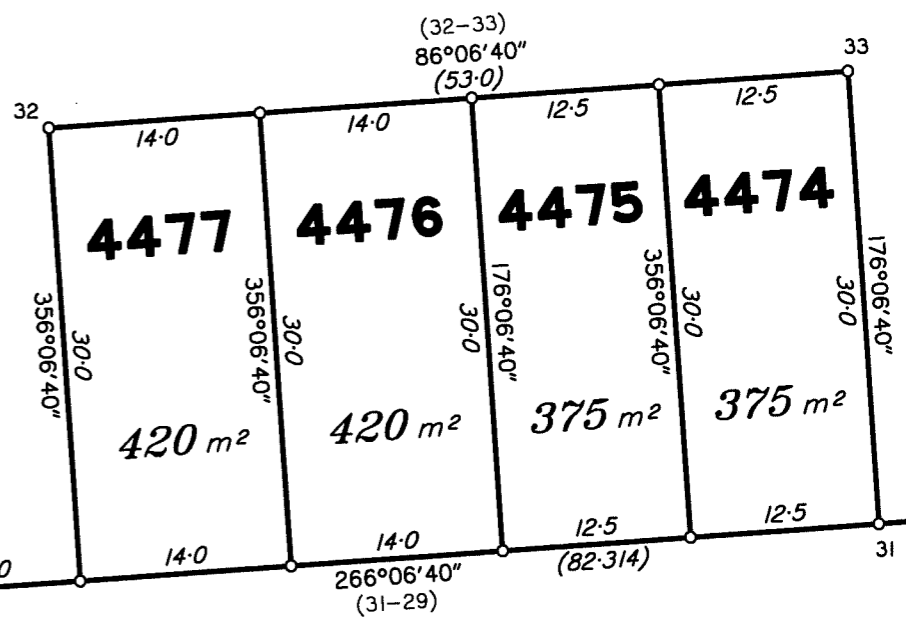


Insert
Plan
Number
SP344914

State copyright reserved.



9003 (Pt)



DRIVE

GUROMAN

SEE SHEET 4

SEE SHEET 3

GALAH WAY
(NEW ROAD)

CRIMSON STREET
(NEW ROAD)

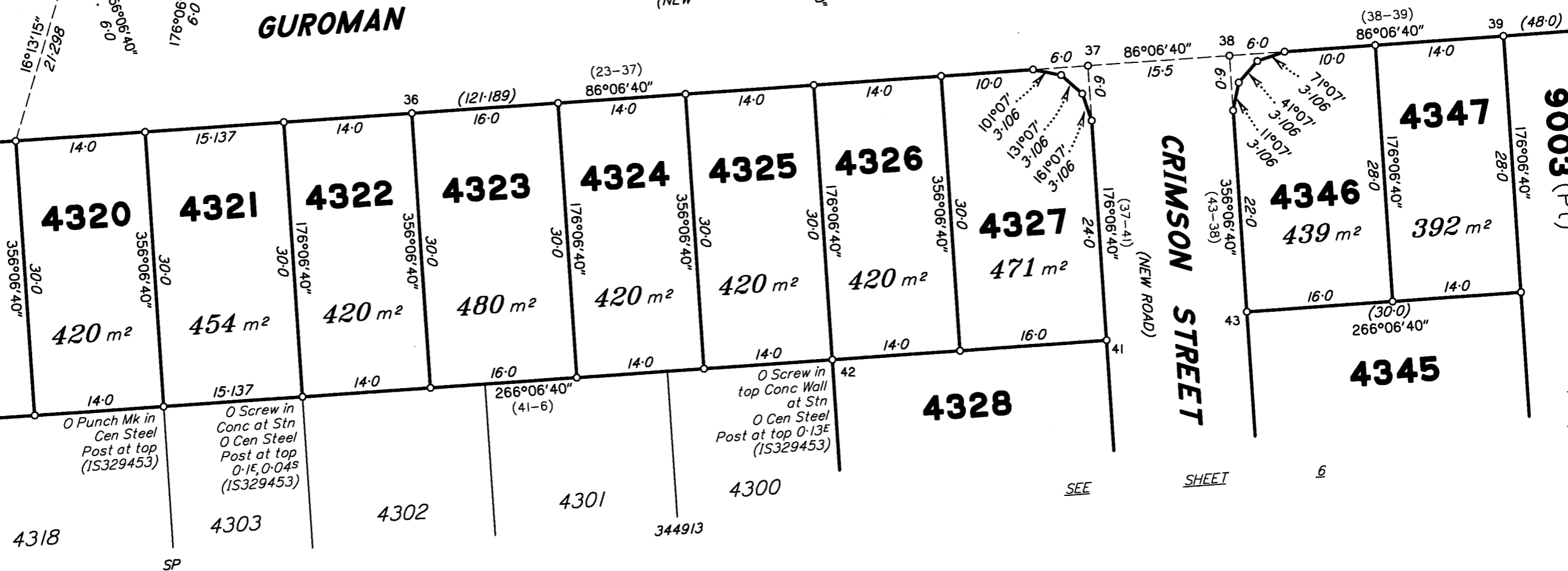
9003 (Pt)

ADDITIONAL SHEET

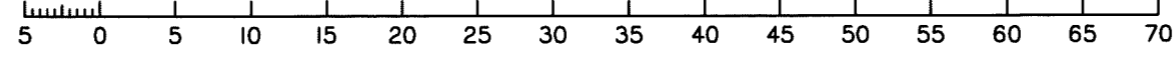


Insert Plan Number
SP344914

State copyright reserved.



Scale 1:500 - Lengths are in metres.



Scale 1:500 - Lengths are in metres.



GUROMAN DRIVE
(NEW ROAD)

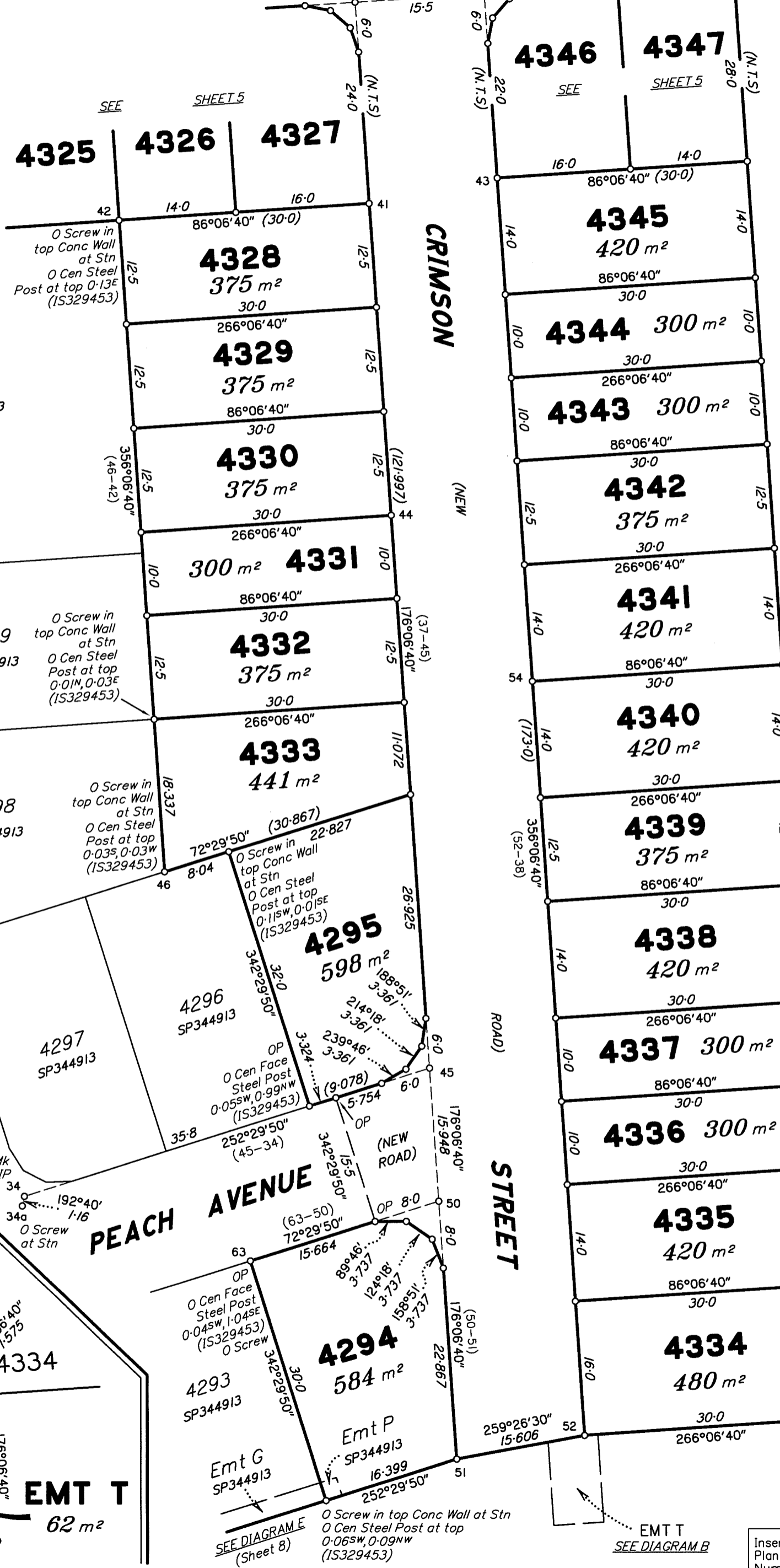
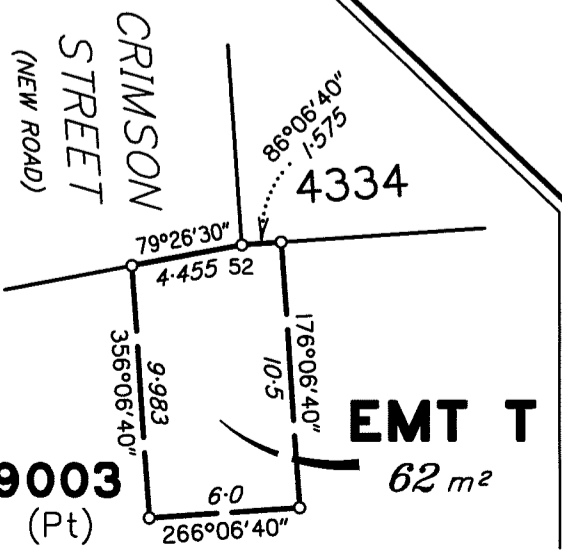


DIAGRAM B
1:300



SEE DIAGRAM E
(Sheet 8)

EMT T
SEE DIAGRAM B

9003 (Pt)

State copyright reserved.

Insert Plan Number **SP344914**

0 50mm 100mm 150mm

DIAGRAM C
1:1000

Lot 899 = 15 Magenta street
GREENBANK QLD 4124

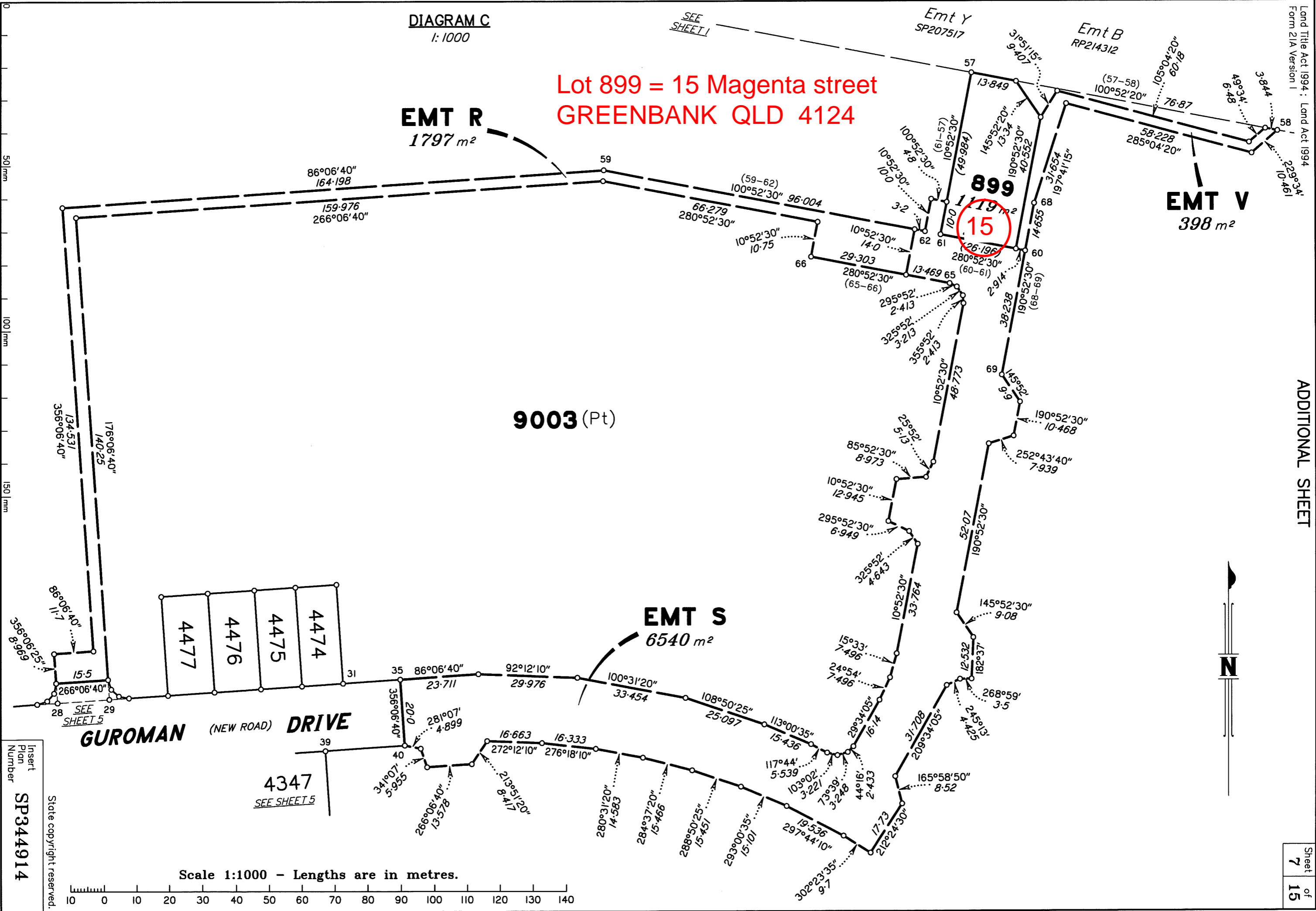
EMT R
1797 m²

EMT V
398 m²

EMT S
6540 m²

9003 (Pt)

899
15



GUROMAN (NEW ROAD) DRIVE

4347
SEE SHEET 5

Scale 1:1000 - Lengths are in metres.

Insert
Plan
Number
SP344914

State copyright reserved.



DIAGRAM G

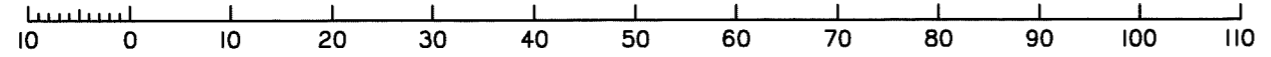
1:750



SEE
DIAGRAM E
(Sheet 8)

SEE
DIAGRAM H
(Sheet 10)

Scale 1:750 - Lengths are in metres.



Insert
Plan
Number
SP344914

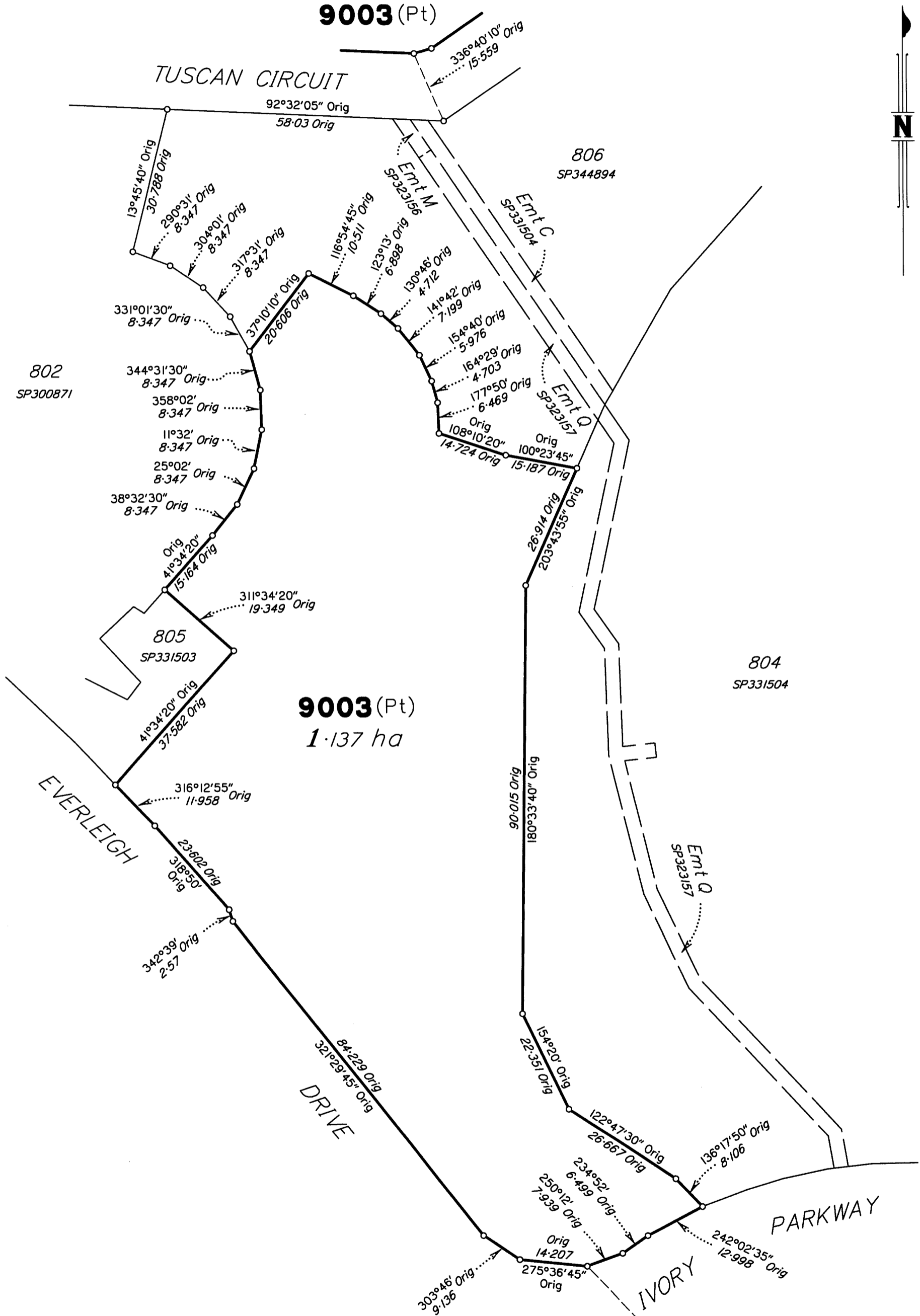
State copyright reserved.

DIAGRAM H

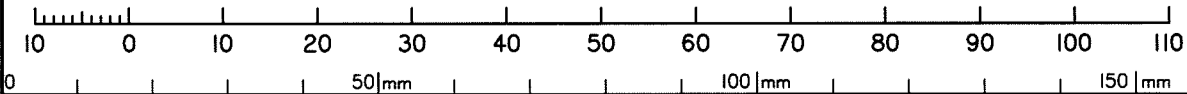
1:800

SEE
DIAGRAM G
(Sheet 9)

9003 (Pt)



Scale 1:800 - Lengths are in metres.

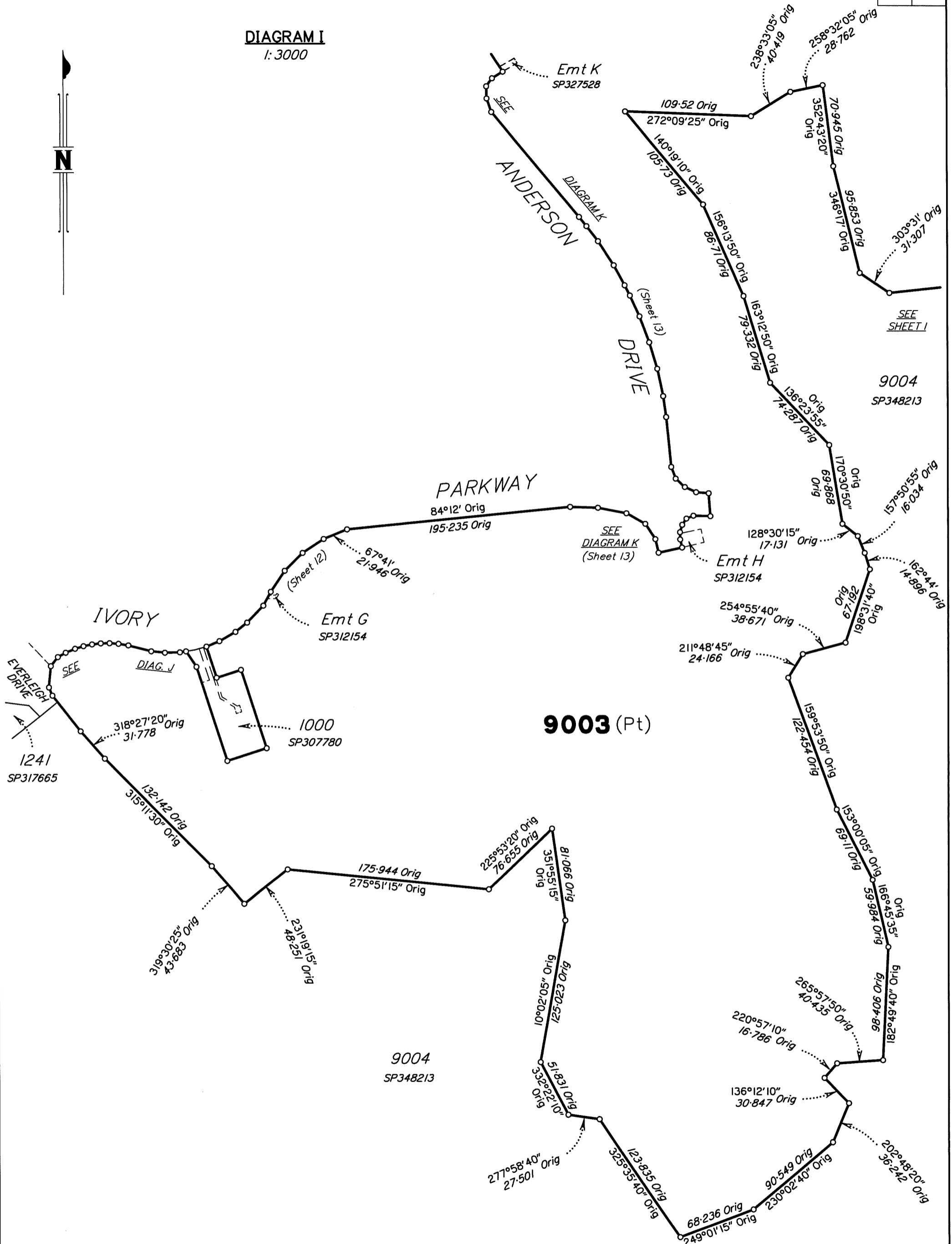


SEE
DIAGRAM J
(Sheet 12)

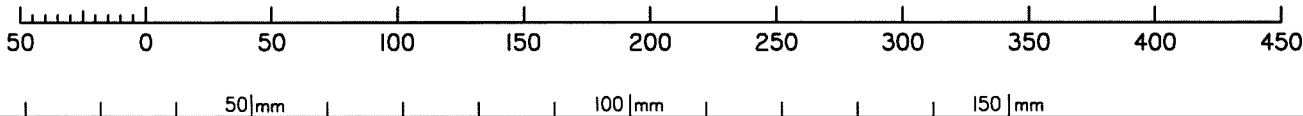
State copyright reserved.

Insert Plan Number **SP344914**

DIAGRAM I
1:3000



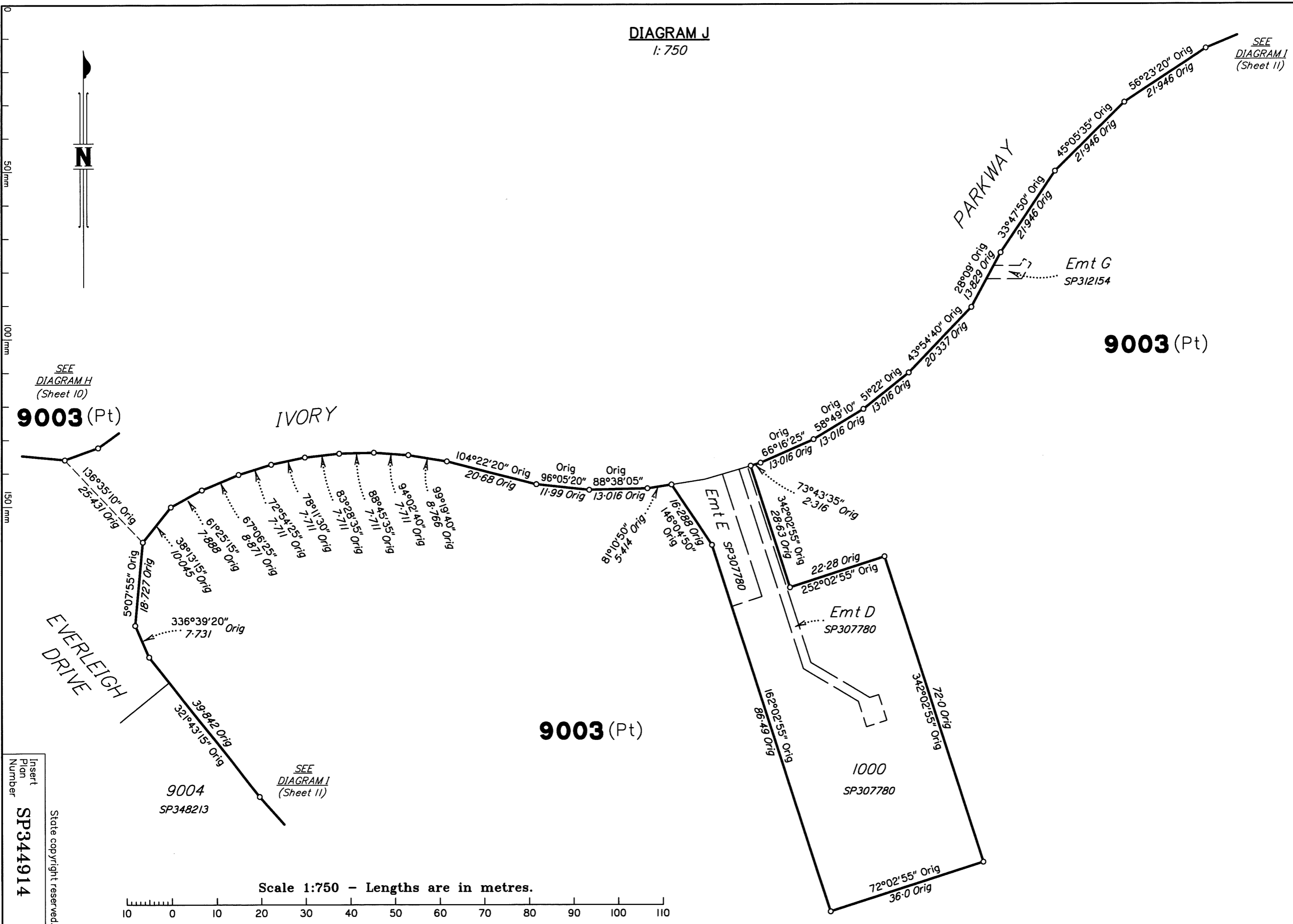
Scale 1:3000 - Lengths are in metres.



State copyright reserved.

Insert Plan Number **SP344914**

DIAGRAM J
1:750



SEE
DIAGRAM H
(Sheet 10)
9003 (Pt)

IVORY

9003 (Pt)

9003 (Pt)

1000
SP307780

Emt G
SP312154

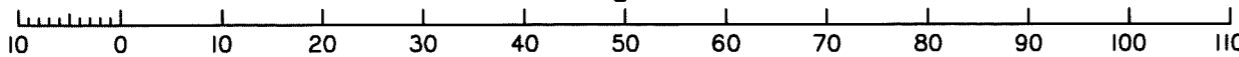
Emt D
SP307780

Emt E
SP307780

SEE
DIAGRAM I
(Sheet 11)

9004
SP348213

Scale 1:750 - Lengths are in metres.

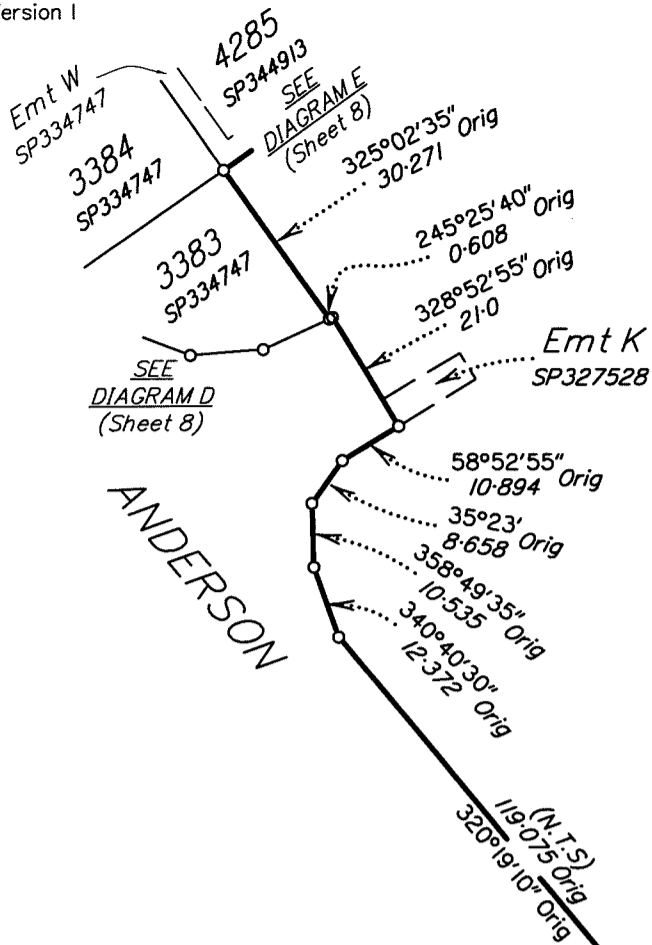


Insert
Plan
Number
SP344914

State copyright reserved.

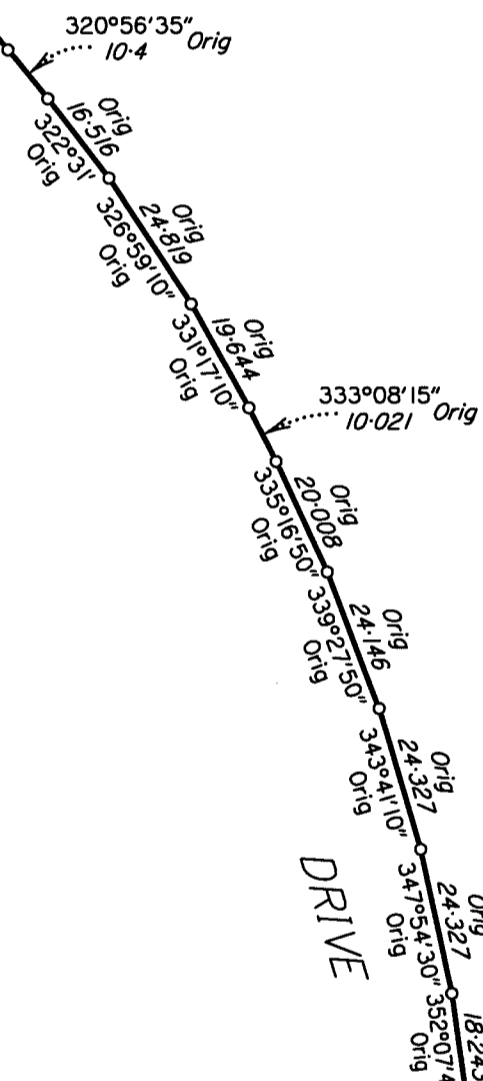
DIAGRAM K

1:1250



ANDERSON

9003 (Pt)



DRIVE

2
SP312154

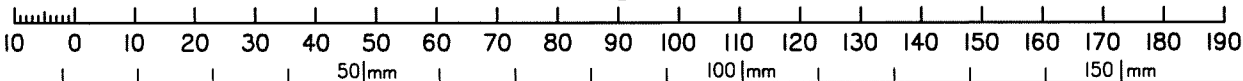
IVORY

PARKWAY

SEE
DIAGRAM I
(Sheet 11)

Emt H
SP312154

Scale 1:1250 - Lengths are in metres.



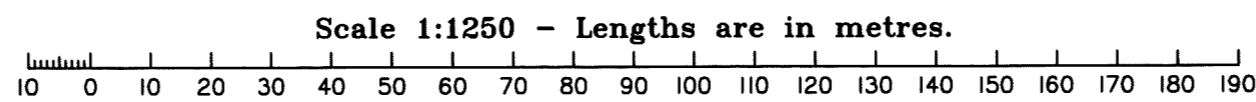
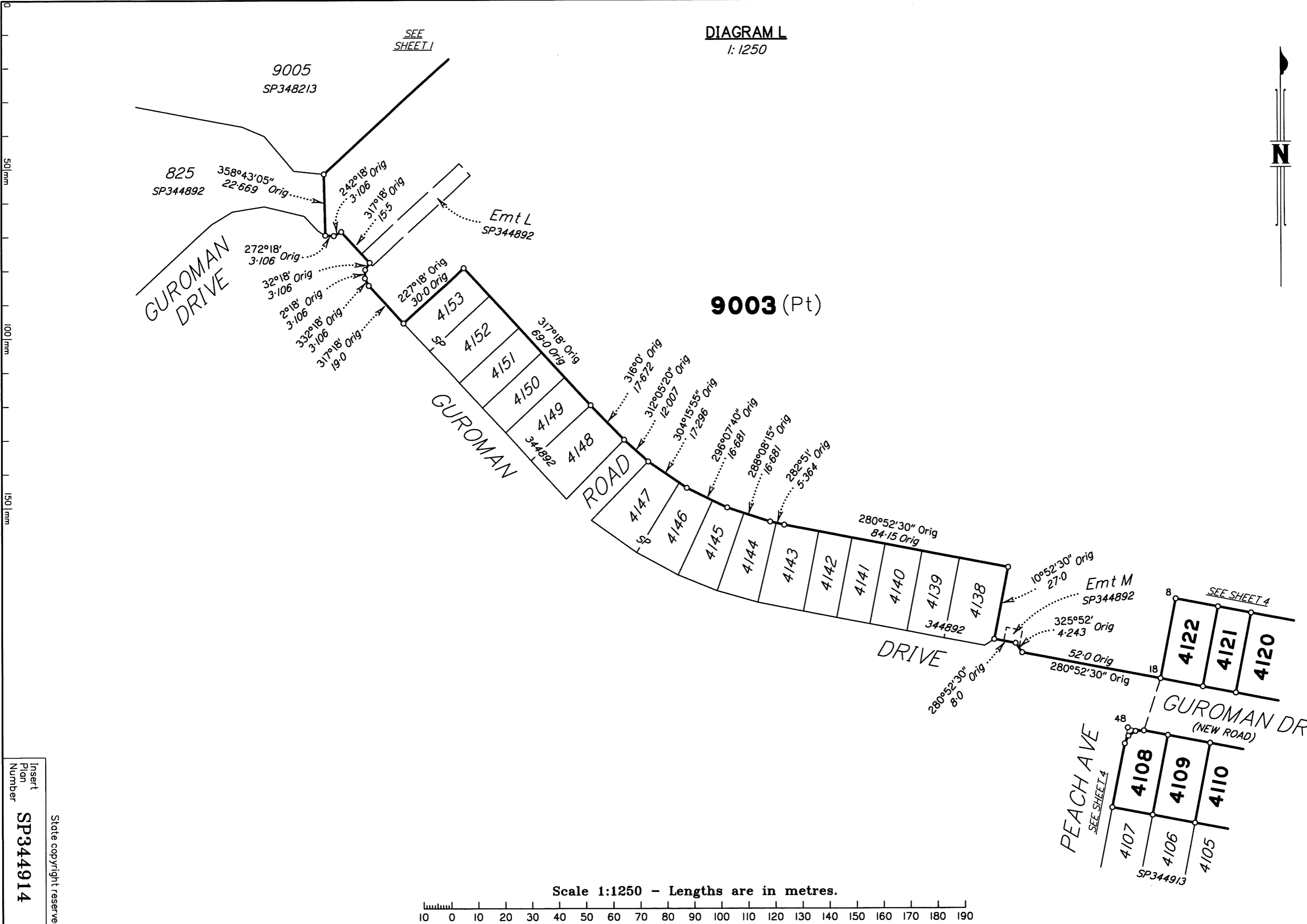
State copyright reserved.

Insert
Plan
Number

SP344914



DIAGRAM L
1:1250



Insert
Plan
Number
SP344914
State copyright reserved.

M.G.A. COORDINATES (GDA-94)

STATION	EASTING	NORTHING	ZONE	P.U.	LINEAGE	METHOD	REMARKS
PM38438	498 673.106	6 933 933.473	56	0-011	Datum	SCDB	
PM59822	499 450.446	6 930 390.910	56	0-011	Datum	SCDB	
PM213009	499 363.159	6 932 184.706	56	0-017	Derived	Quick Static	
11a	500 274.157	6 932 429.634	56	0-011	Derived	Quick Static	O Star Picket
34a	499 608.618	6 932 087.067	56	0-011	Derived	Quick Static	O Screw in Conc

Adjustment - QLD ANJ 18.07 (16-July-2018)

PERMANENT MARKS

PM	ORIGIN	BEARING	DIST	NO	TYPE
67-OPM	IS323931	254°12'	0.66	213009	Standard

REFERENCE MARKS

STN	TO	ORIGIN	BEARING	DIST
4	O Screw in Kerb	IS329453	132°56'	5.354
5	OIP	IS329453	89°16'	3.186
7	O Screw in Kerb	IS329453	293°55'	4.394
11a	O Star Picket	SP334753	at Station	
13	OIP	SP348213	325°53'	4.814
34	OIP	IS329453	129°0'	2.327
34a	O Screw in Conc	IS329453	at Station	
48	O Screw in Conc	IS323931	280°24'	2.178
48	OIP	IS323931	12°49'	2.611
63	O Screw in Channel	IS329453	336°56'	4.164
67	OIP	SP344913	185°35'	1.147

Additional reference marks to be placed following road construction. (see IS329482).

Reinstatement Report

This plan is part of a standard 3.22 large scale land development, using the coordinate framework and dimensions established on IS266917.

All original corners are fixed by marks and reference marks in agreement with the previous plans listed below.

Plans used: SP341938, SP344913, SP344892, IS266917, IS323931 & IS329453.