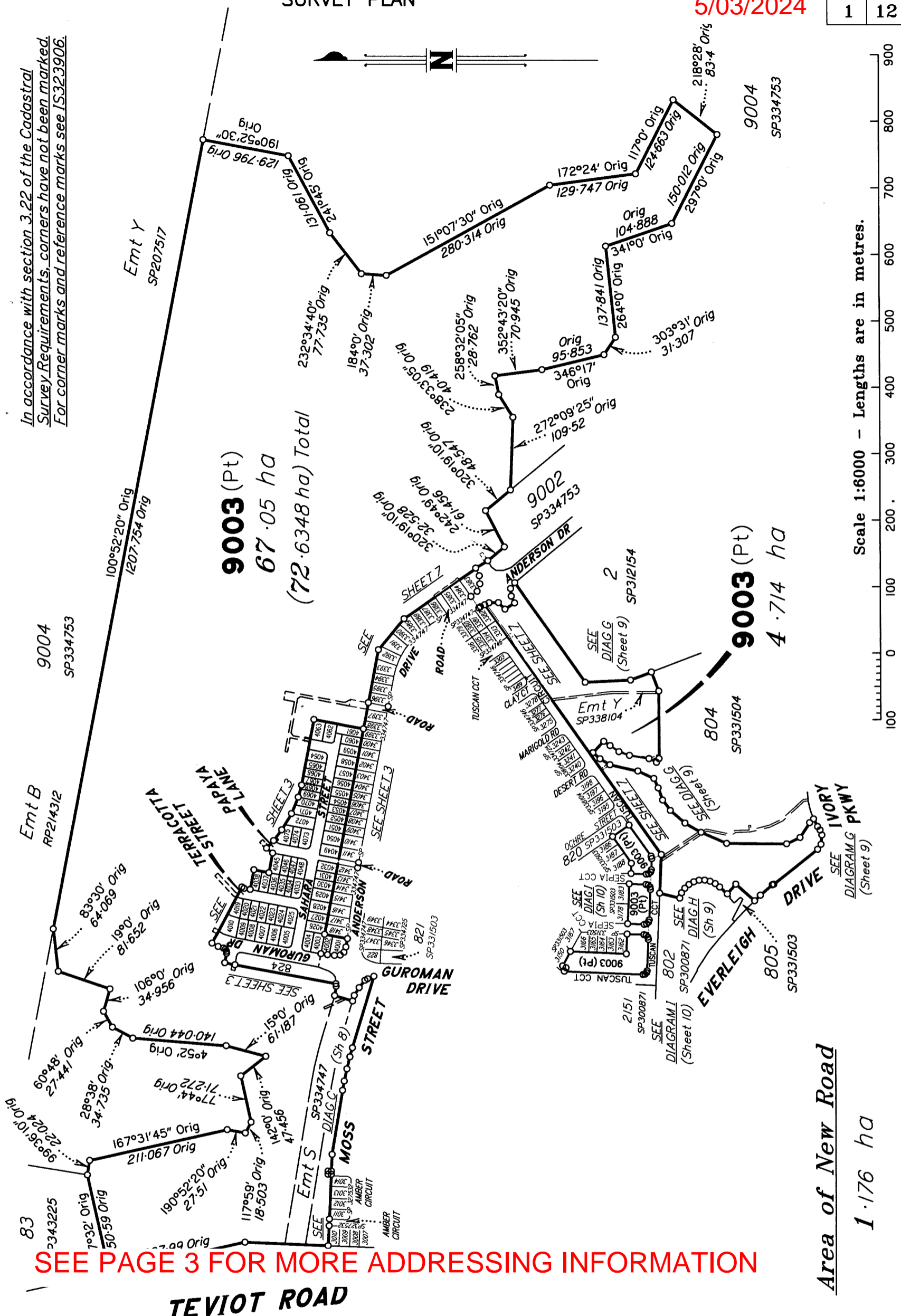


See Sheet 12 for Reference Marks, Permanent Marks, & MGA Coordinates Tables.

See Sheet 12 for Reinstatement Report.

Original information compiled from SP334747 in the Department of Resources.

In accordance with section 3.22 of the Cadastral Survey Requirements, corners have not been marked. For corner marks and reference marks see IS323906.



9003 (Pt)
67.05 ha
 (72.6348 ha) Total

9003 (Pt)
4.714 ha

SEE PAGE 3 FOR MORE ADDRESSING INFORMATION

Area of New Road
1.176 ha

TEVIOT ROAD

SAUNDERS HAVILL GROUP PTY LTD (ACN 144 972 949) hereby certify that the land comprised in this plan was surveyed by the corporation, by Clinton Miles URQUHART, surveying graduate, for whose work the corporation accepts responsibility, under the supervision of Michael KLEINE, cadastral surveyor, and that the plan is accurate, that the said survey was performed in accordance with the Survey and Mapping Infrastructure Act 2003 and Surveyors Act 2003 and associated Regulations and Standards and that the said survey was completed on 30/01/2024



M. Kleine
 Authorised Signatory
John Cal
 Authorised Signatory

Date: **6-02-2024**

Plan of Lots 824, 4001-4010, 4019-4038, 4045-4075 & 9003 and Easements A-F in Lots 4005-4010 respectively, Easement G in Lot 4075 and Easements I, L, N, O, P, R, X & Z in Lot 9003

Cancelling Lot 9003 on SP334747

LOCAL GOVERNMENT: **LOGAN CITY** LOCALITY: **GREENBANK**

Meridian: **MGA (Zone 56) vide PSMs**

Survey Records: **No**

Scale: **1:6000**

Format: **STANDARD**



SP344891

WARNING : Folded or Mutilated Plans will not be accepted.
Plans may be rolled.
Information may not be placed in the outer margins.

(Dealing No.)

4. Lodged by

(Include address, phone number, email, reference, and Lodger Code)

I. Existing		Created		
Title Reference	Description	New Lots	Road	Secondary Interests
51337250	Lot 9003 on SP334747	824, 4001-4010, 4019-4038, 4045-4075 & 9003	New Rd	Emts A-G, I, L, N, O, P, R, X & Z

EXISTING ADMINISTRATIVE ADVICE ALLOCATIONS

Administrative Advice	Lots to be Encumbered
719945618 (Veg Notice)	824, 4001-4010, 4019-4038, 4045-4075 & 9003

ENCUMBRANCE EASEMENT ALLOCATIONS

Easement	Lots to be Encumbered
720917162 (Emt M on SP323156)	9003
721023221 (Emts J & K on SP327528)	9003
721158069 (Emt Q on SP323157)	9003
721476938 (Emts C & D on SP331504)	9003
721476939 (Emts AA & AB on SP331504)	9003
721476940 (Emt BB on SP331504)	9003
722337718 (Emt Y on SP338104)	9003
722621066 (Emt H on SP334725)	9003
722721358 (Emt AC on SP334746)	9003
722933700 (Emt S on SP334747)	9003
722933701 (Emt T on SP334747)	9003
722933702 (Emt V on SP334747)	9003
722933703 (Emt W on SP334747)	9003

Part of 722933702, as far as it relates to Easement U on SP334747, is to be surrendered prior to registration of this plan.

824, 4001-4010, 4019-4038,
4045-4075 & 9003

Por 434

Lots

Orig

2. Orig Grant Allocation :

3. References :

Dept File :
Local Govt :
Surveyor : 7598-P10.1 Survey Advice: 2018-0912

5. Passed & Endorsed :

By: SAUNDERS HAVILL GROUP PTY LTD
Date: 6/02/2024
Signed: *[Signature]*
Designation: Endorsing Officer

6. Building Format Plans only.

I certify that :
* As far as it is practical to determine, no part of the building shown on this plan encroaches onto adjoining lots or road;
* Part of the building shown on this plan encroaches onto adjoining * lots and road

.....
Cadastral Surveyor/Director* Date
*delete words not required

7. Lodgement Fees :

Survey Deposit \$
Lodgement \$
.....New Titles \$
Photocopy \$
Postage \$
TOTAL \$

8. Insert Plan Number **SP344891**

Lot 9003 = Lot 9003 Teviot Road GREENBANK QLD 4124 (Future sub division)

9003 (Pt)

Lots 4045-4048, 4073-4075 addressed off Papaya Lane GREENBANK 4124

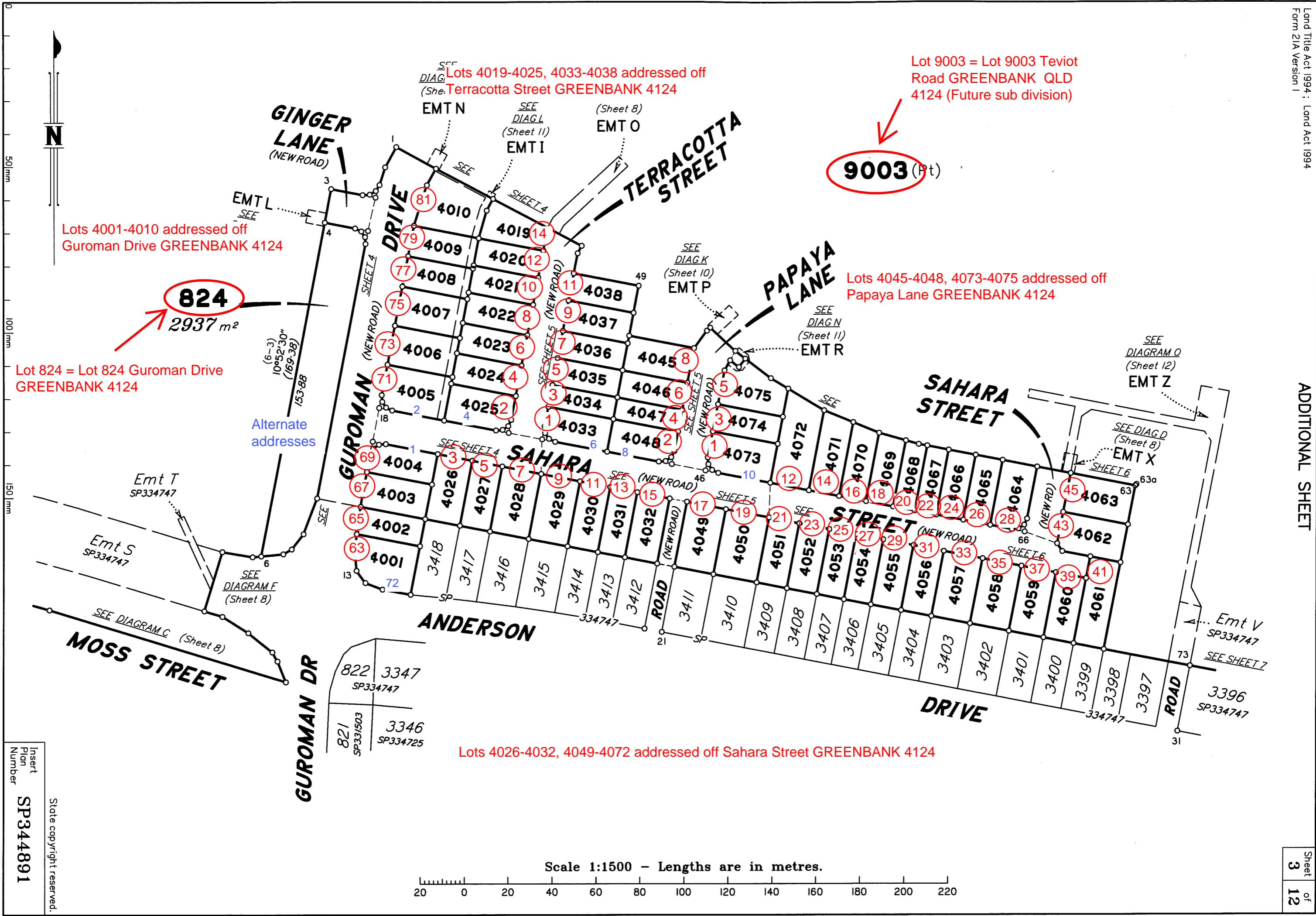
Lots 4019-4025, 4033-4038 addressed off Terracotta Street GREENBANK 4124

Lots 4001-4010 addressed off Guroman Drive GREENBANK 4124

824
2937 m²

Lot 824 = Lot 824 Guroman Drive GREENBANK 4124

Lots 4026-4032, 4049-4072 addressed off Sahara Street GREENBANK 4124

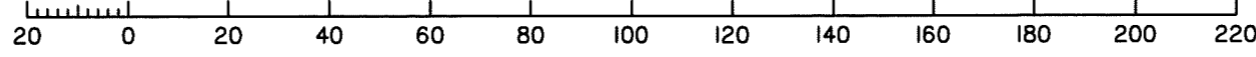


Alternate addresses

Insert
Plan
Number
SP344891

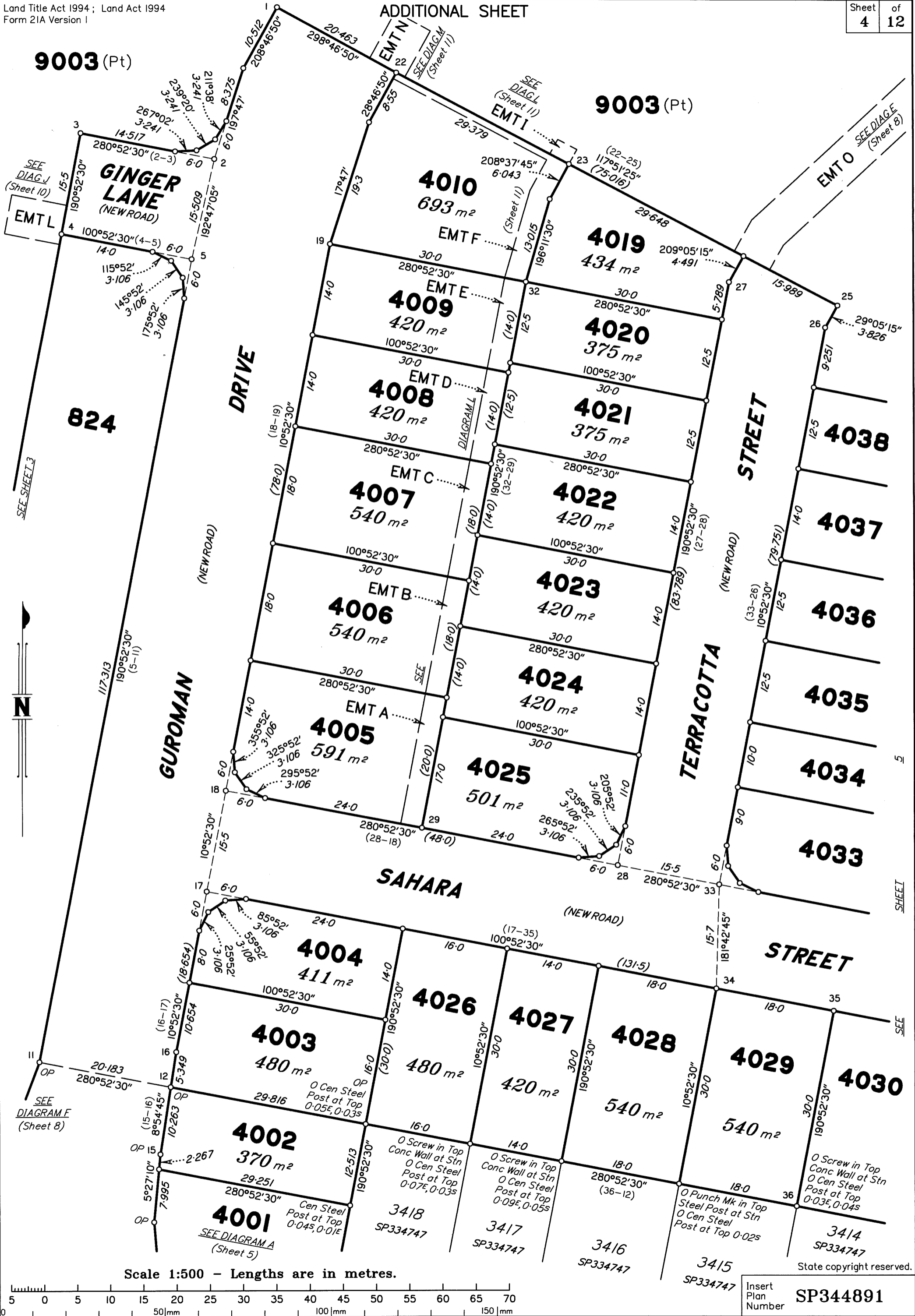
State copyright reserved.

Scale 1:1500 - Lengths are in metres.

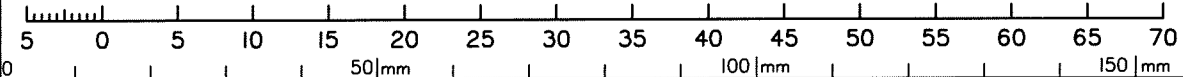


9003 (Pt)

9003 (Pt)



Scale 1:500 - Lengths are in metres.



State copyright reserved.
Insert Plan Number **SP344891**

Scale 1:500 - Lengths are in metres.

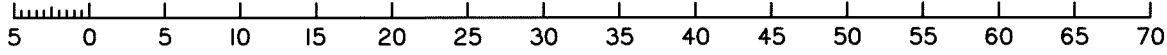
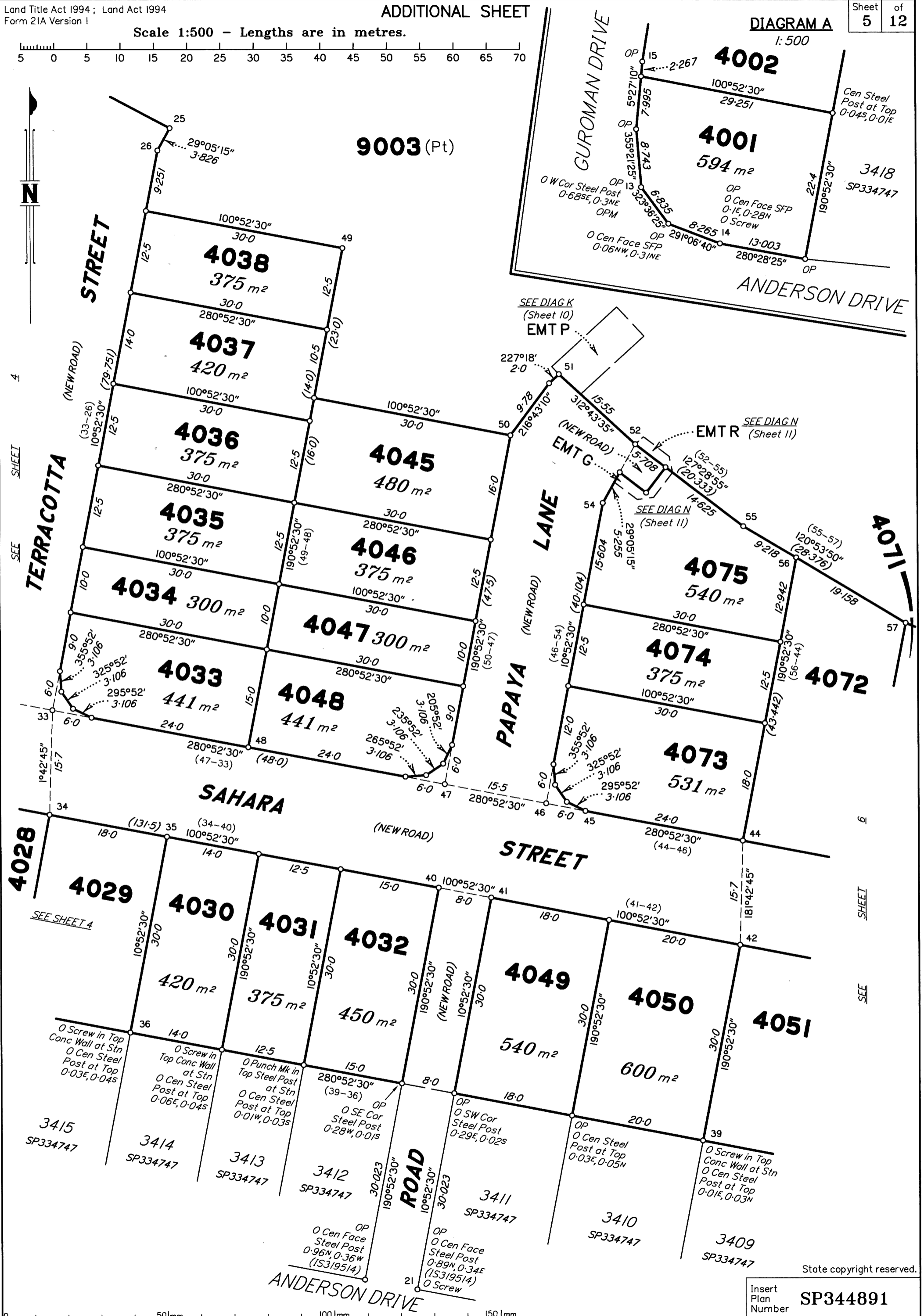


DIAGRAM A
1:500



SEE DIAGN (Sheet 10)
EMTP

SEE DIAGN (Sheet 11)
EMTR

SEE DIAGN (Sheet 11)
EMTG

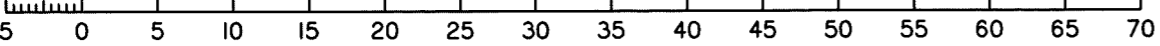
State copyright reserved.

Insert Plan Number **SP344891**

9003 (Pt)



Scale 1:500 - Lengths are in metres.



Insert
Plan
Number
SP3344891

State copyright reserved.

SEE SHEET 5

3410
SP334747

O Screw in Top
Conc Wall at Stn
O Cen Steel
Post at Top
0-01E, 0-03N

3409
SP334747

OP
O Cen Steel
Post at Top
0-03E

3408
SP334747

OP
O Punch Mk in
Top Steel Post
at Stn
O Cen Steel
Post at Top
0-05W, 0-01S

3407
SP334747

O Screw in
Top Conc Wall
at Stn
O Cen Steel
Post at Top
0-03W, 0-04S

3406
SP334747

O Screw in
Top Conc Wall
at Stn
O Cen Steel
Post at Top
0-01W, 0-09S

3405
SP334747

O Punch Mk in
Top Steel Post
at Stn
O Cen Steel
Post at Top
0-08E, 0-05S

3404
SP334747

O Punch Mk in
Top Steel Post
at Stn
O Cen Steel
Post at Top
0-09E, 0-06S

3403
SP334747

O Screw in Top
Conc Wall at Stn
O Cen Steel
Post at Top
0-15E, 0-01S

3402
SP334747

OP
O Cen Steel
Post at Top
0-04E, 0-03S

3401
SP334747

O Screw in
Top Conc Wall
at Stn
O Cen Steel
Post at Top
0-05W, 0-02S

3400
SP334747

O Screw in
Top Conc Wall
at Stn
O Cen Steel
Post at Top
0-04E, 0-02N

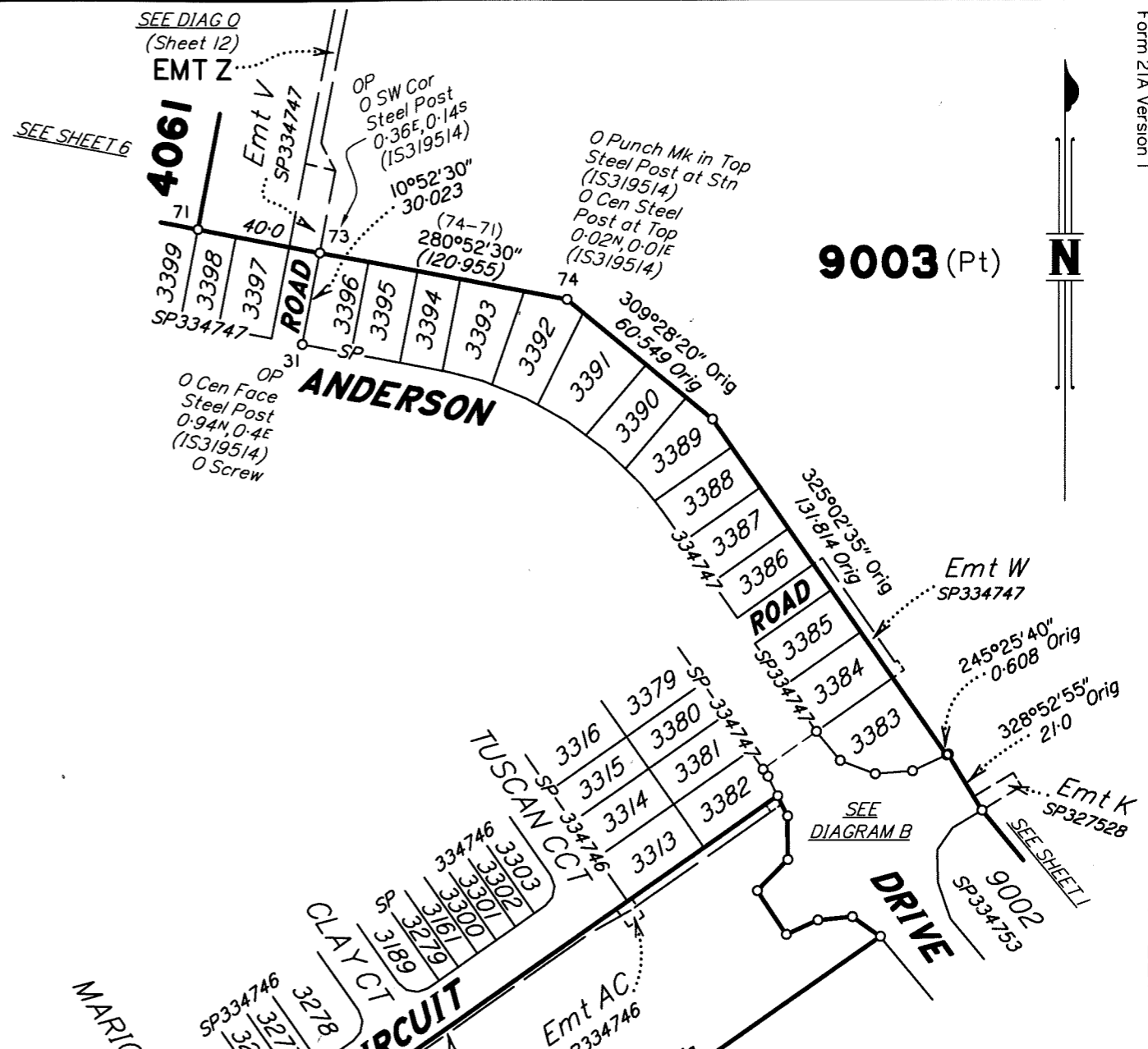
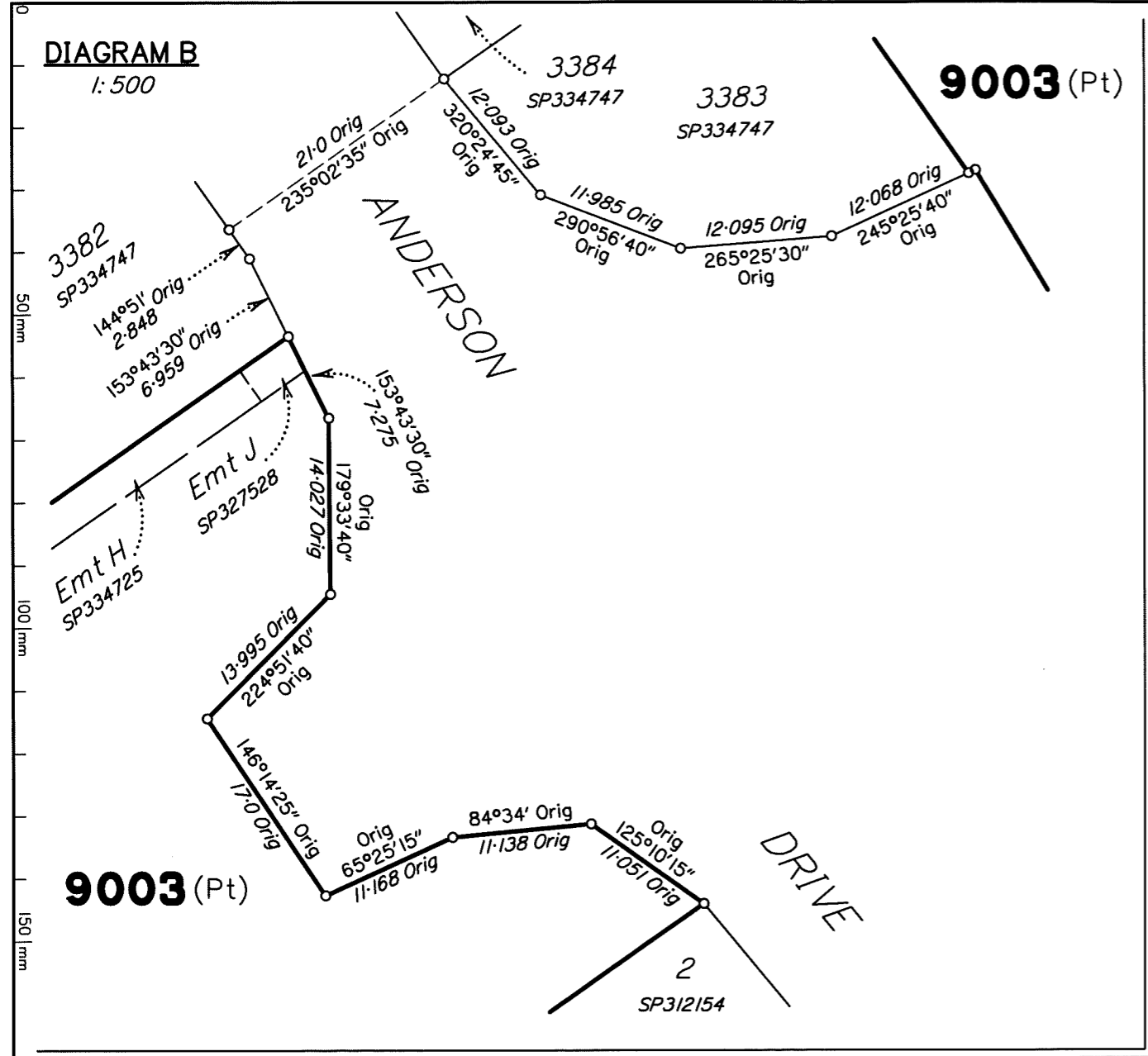
3399
SP334747

SEE SHEET 7

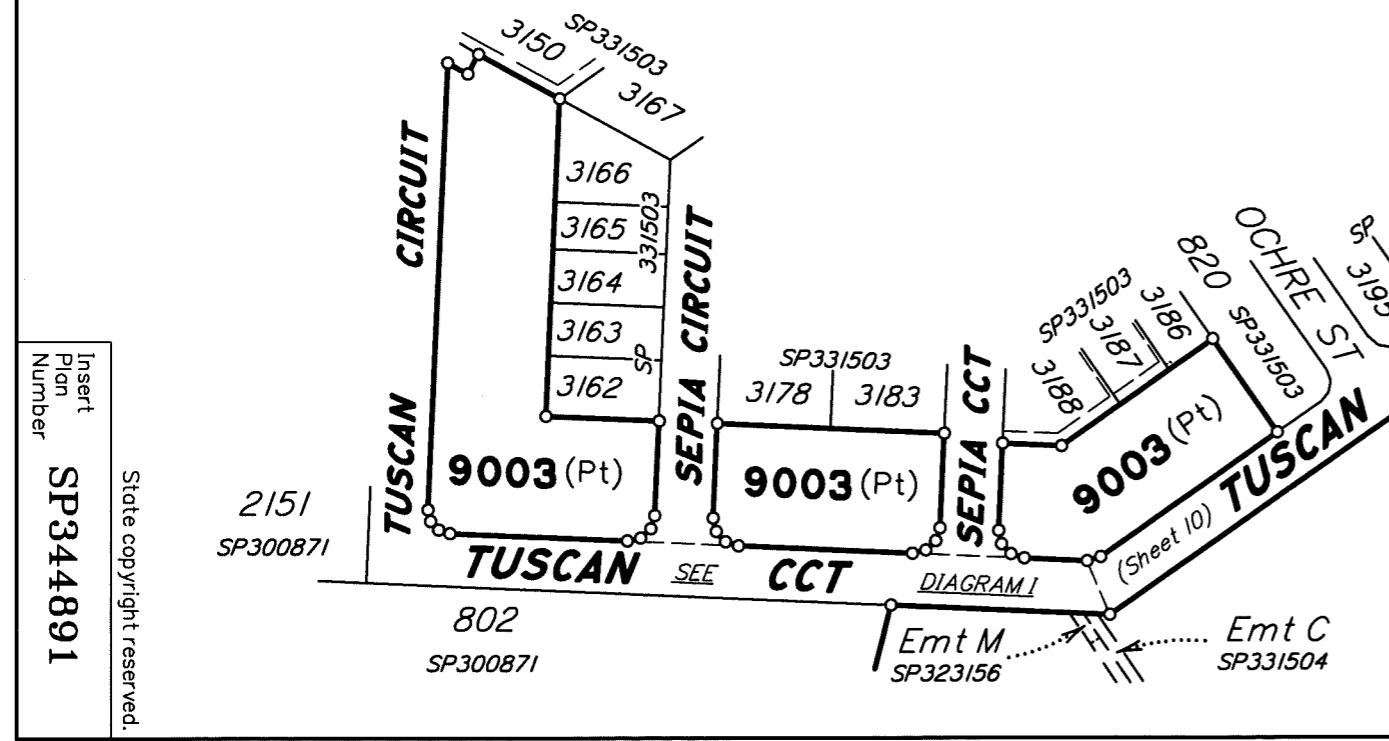
3398
SP334747

Pin at Stn
63a
40-15'
0-73

DIAGRAM B
1:500

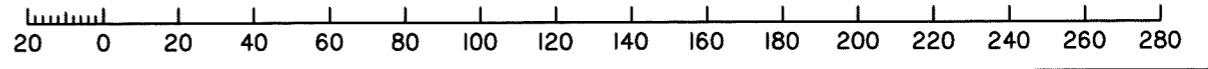


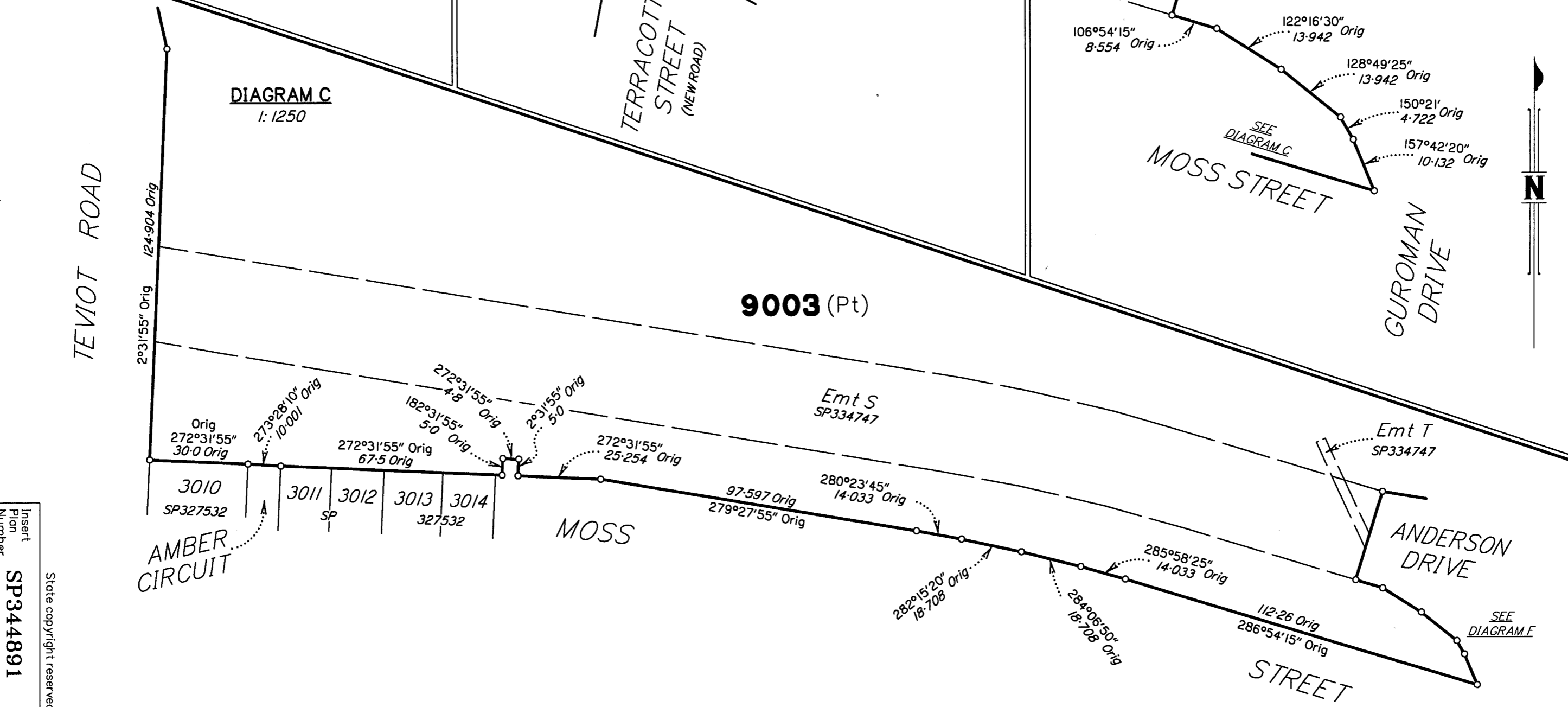
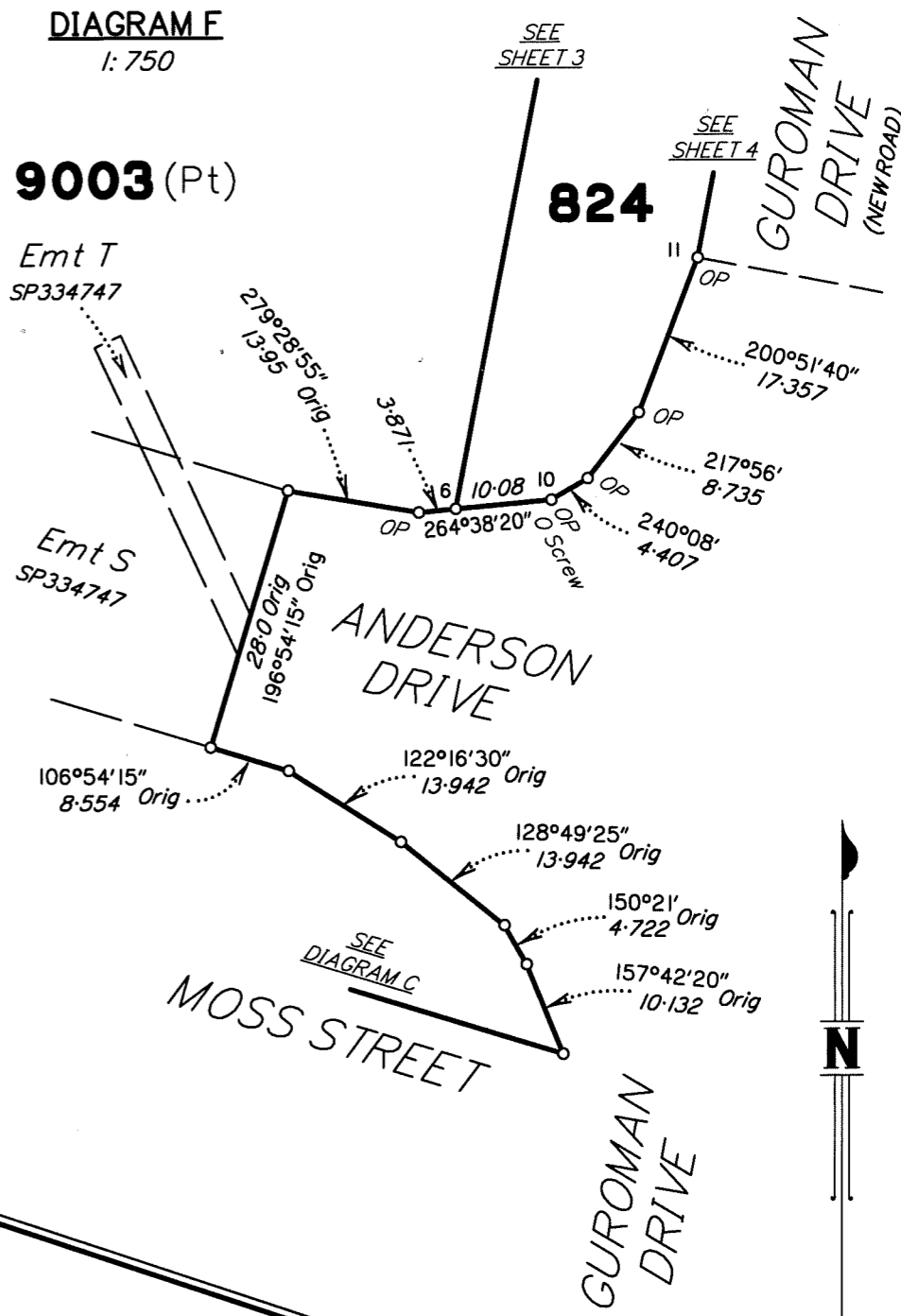
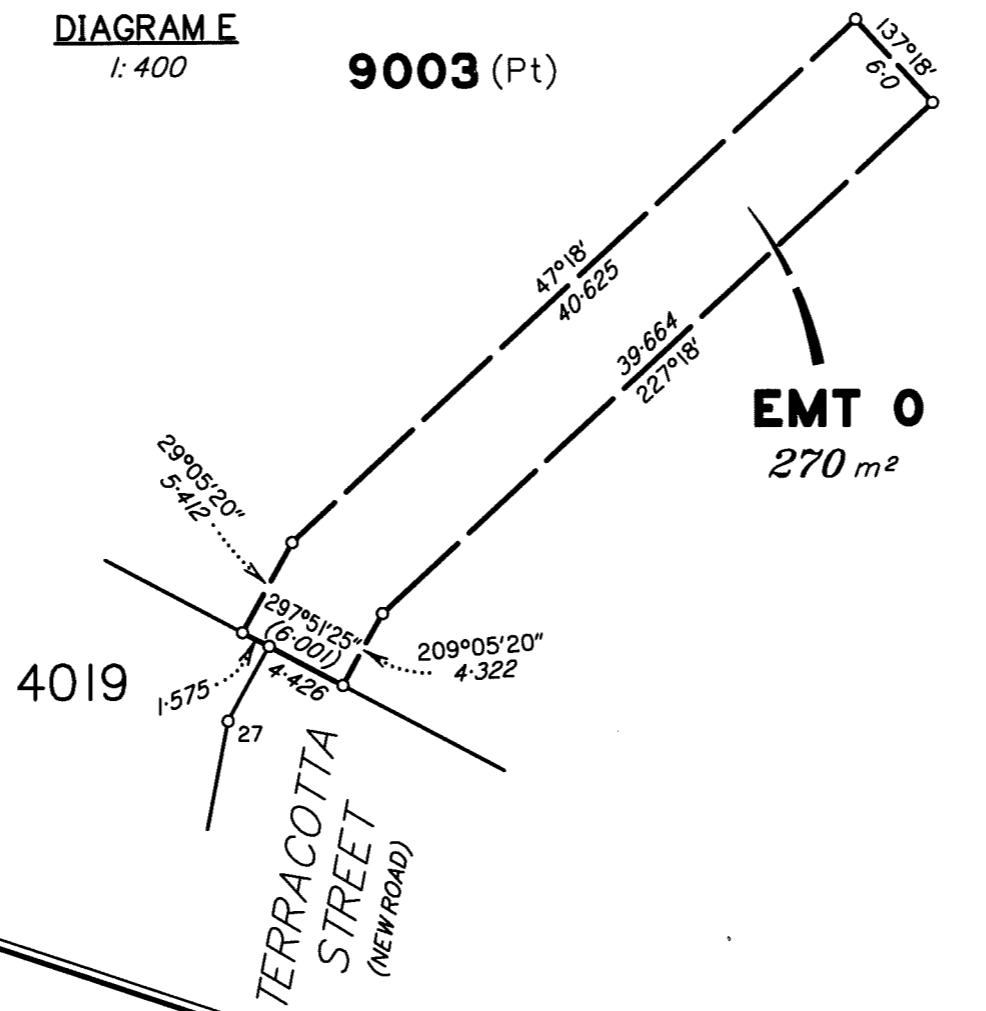
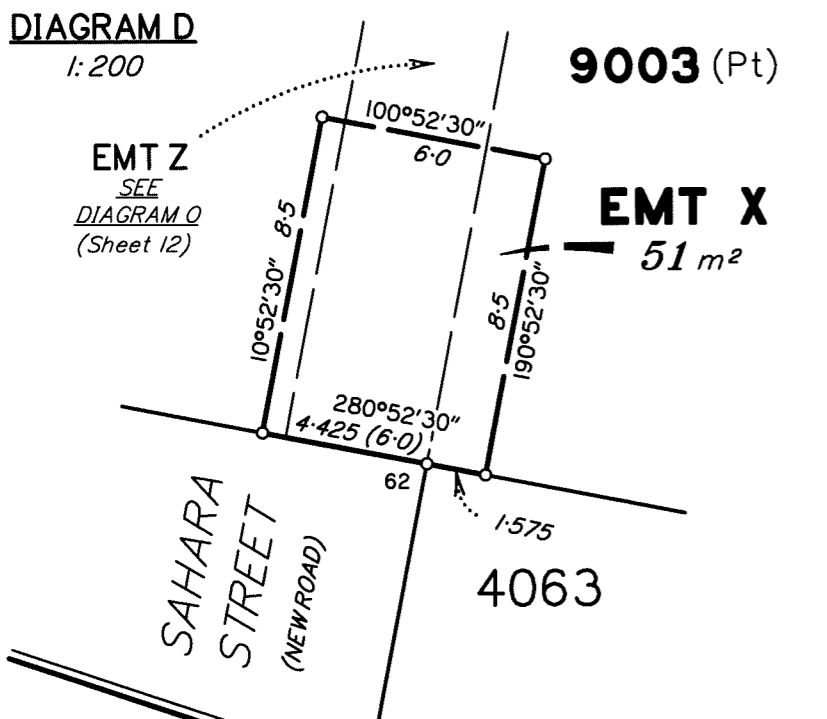
9003 (Pt)



9003 (Pt)

Scale 1:2000 - Lengths are in metres.



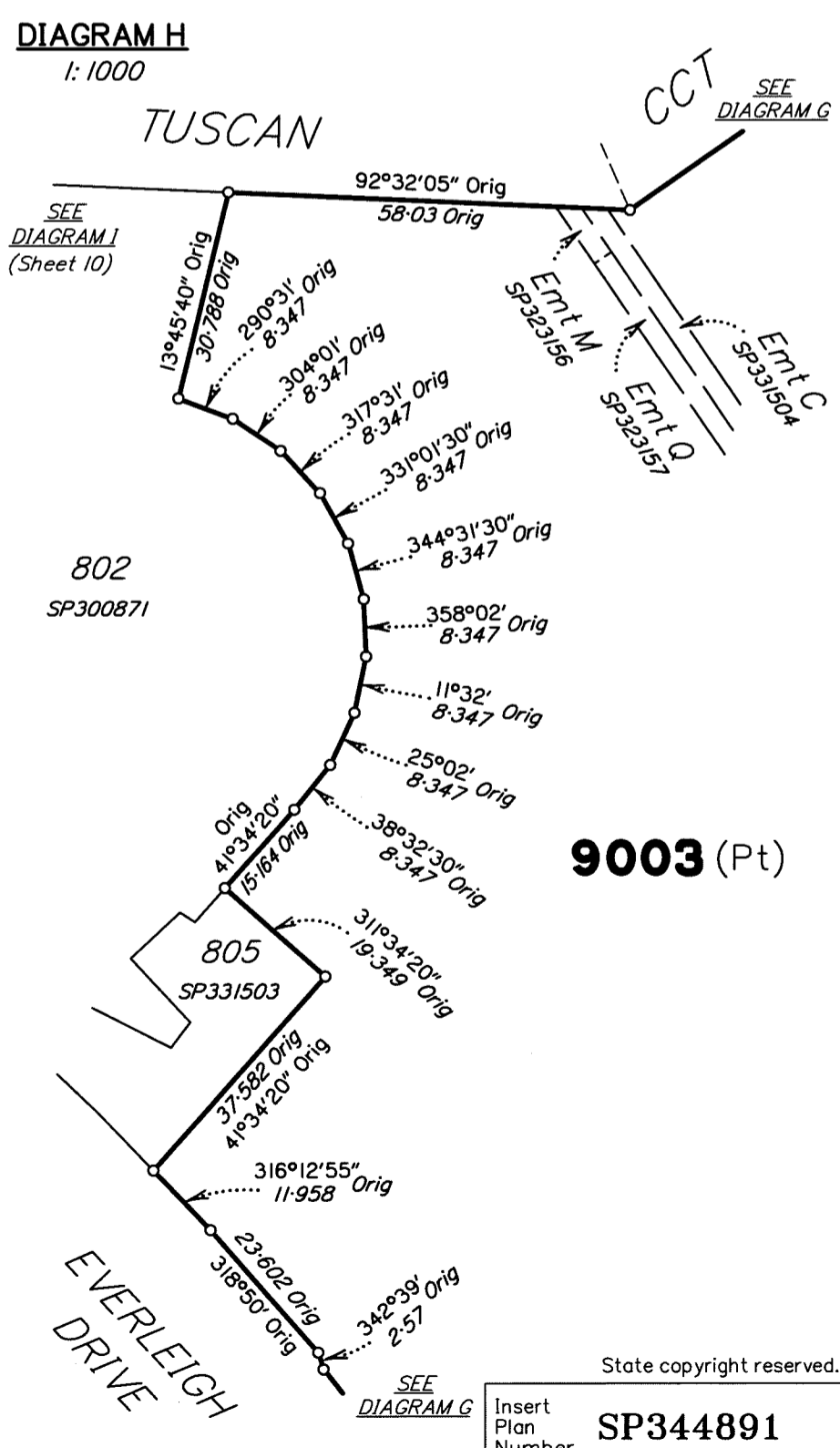
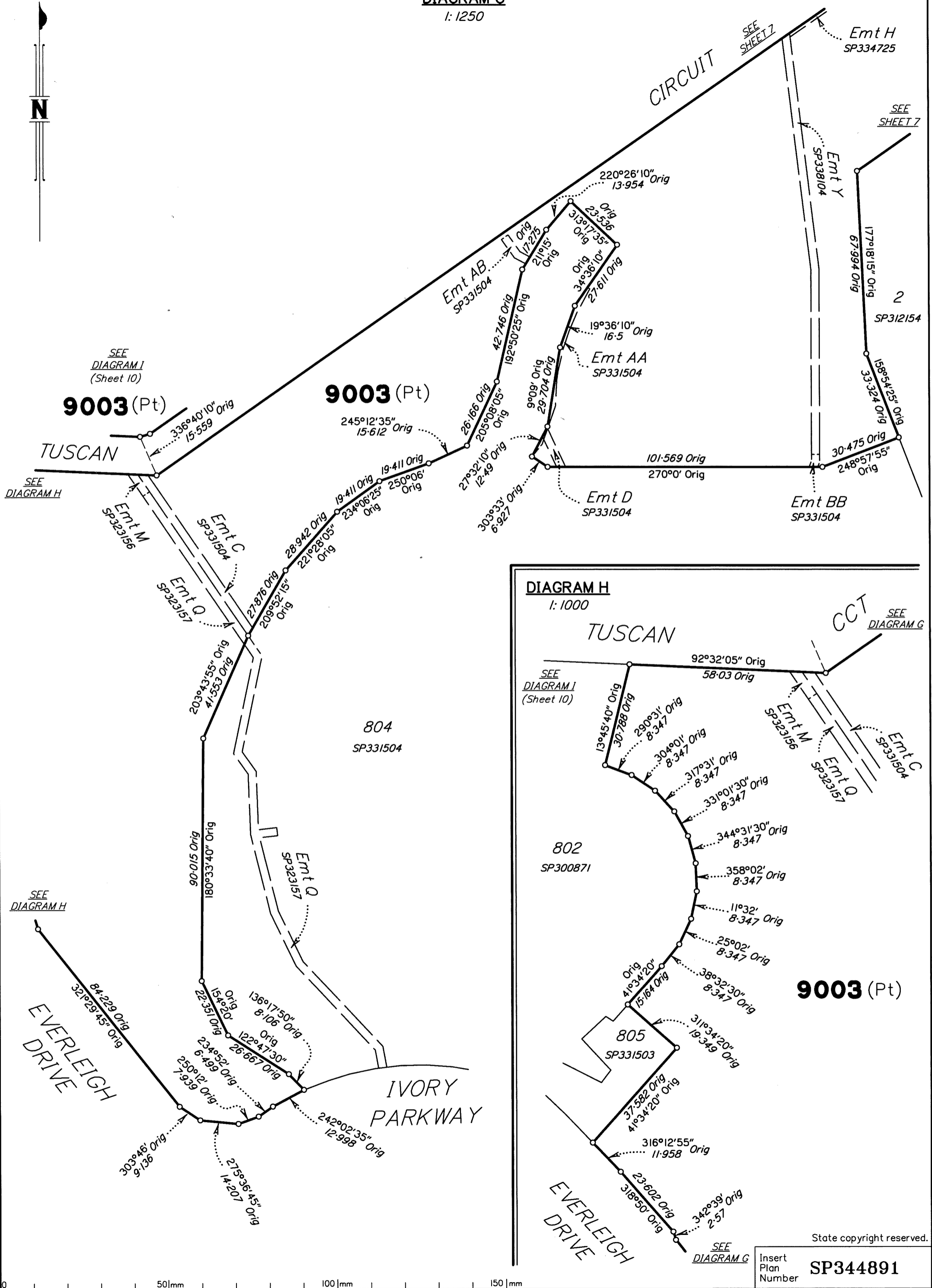


Insert
Plan
Number
SP344891
State copyright reserved.



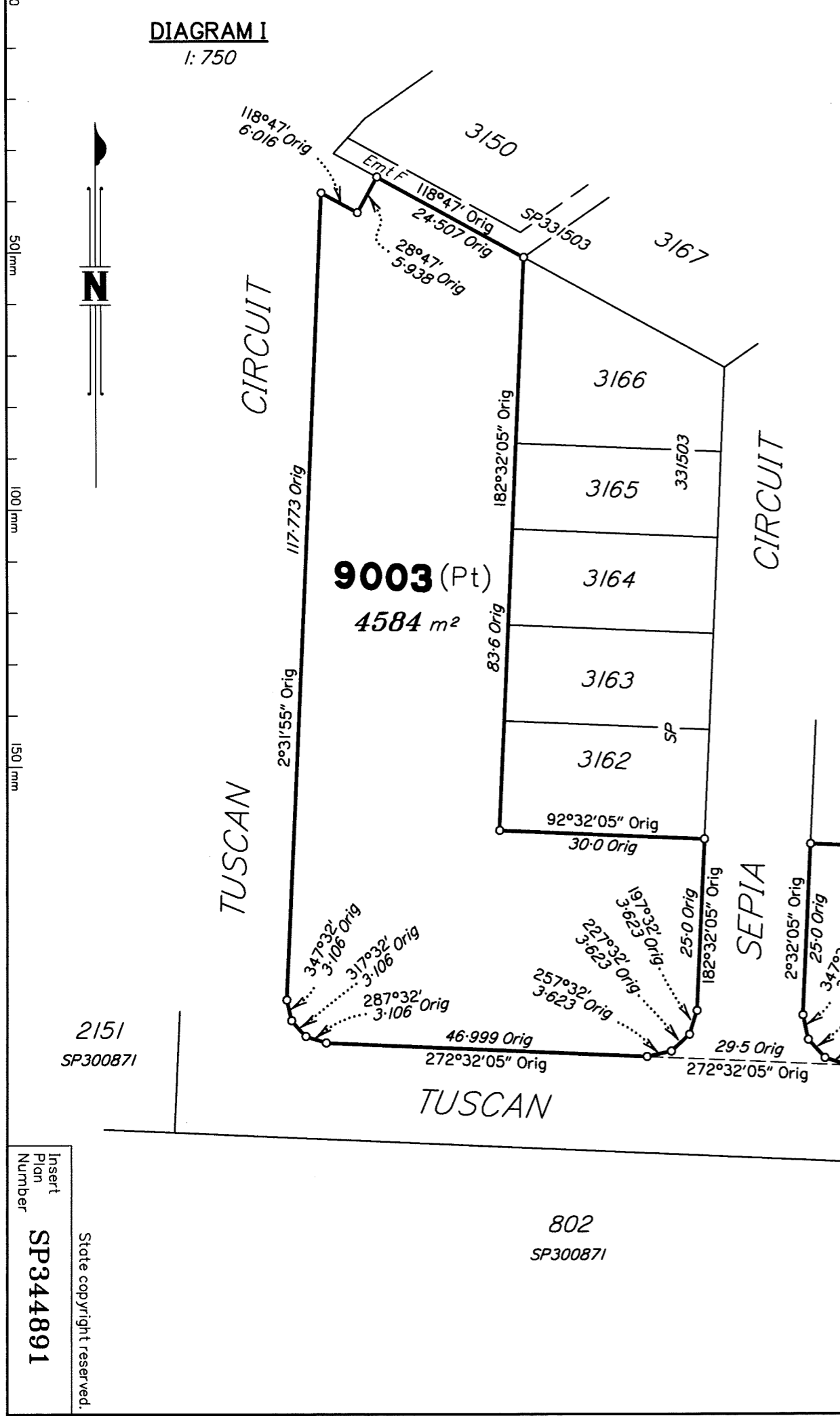
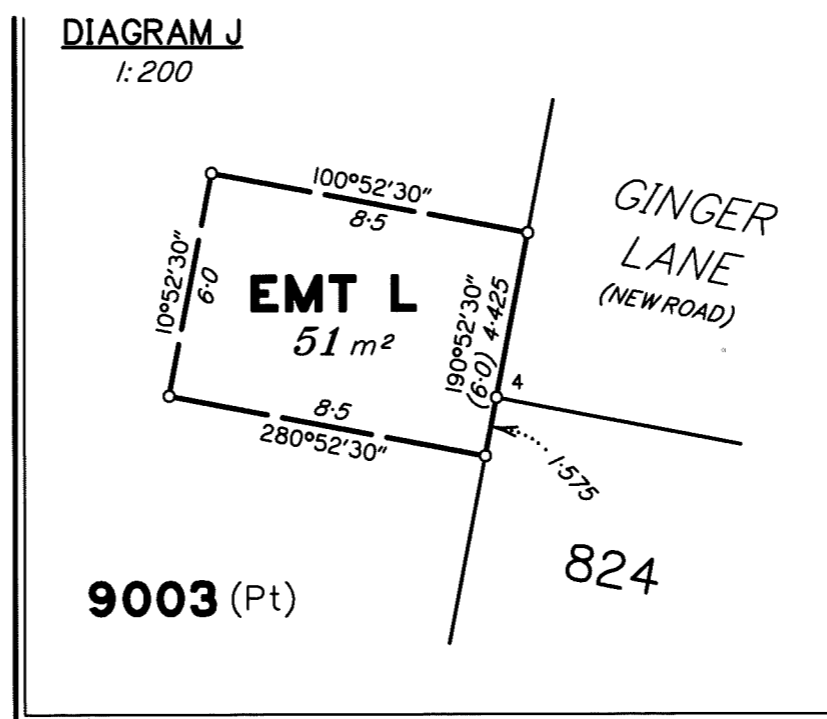
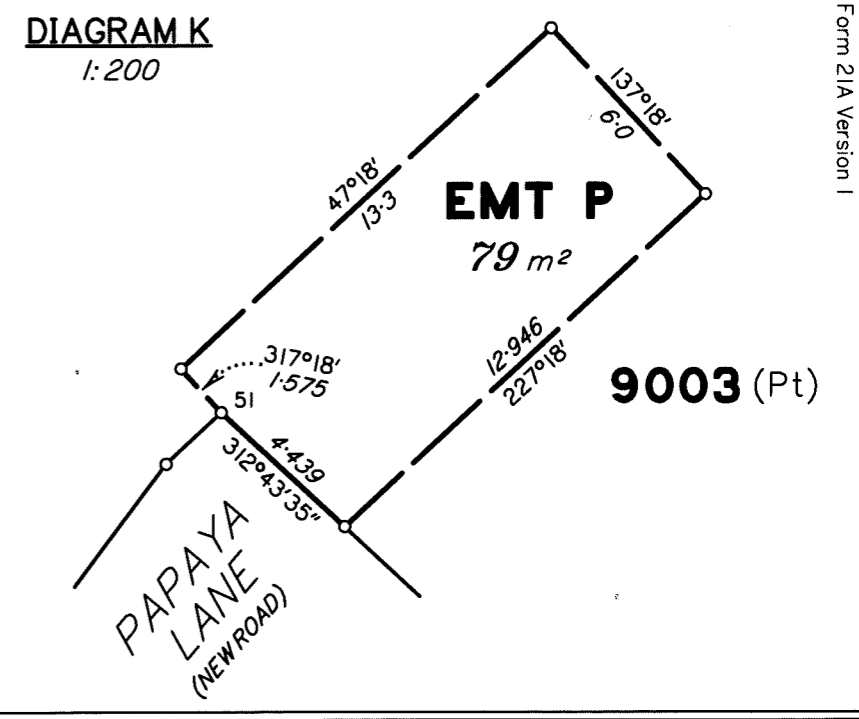
DIAGRAM G

1:1250



State copyright reserved.

Insert Plan Number **SP344891**



SEE
DIAGRAM G
(Sheet 9)

SEE
DIAGRAM H
(Sheet 9)

Emt M
Sp323156
Emt C
Sp331504
Emt Q
Sp323157

Insert
Plan
Number
SP344891
State copyright reserved.

EMT N ADDITIONAL SHEET
SEE DIAGM

DIAGRAM L
1:300



GUROMAN DRIVE
(NEW ROAD)

9003 (Pt)

EMT I
8 m²

4010

EMT F
89 m²

4019

EMT E
46 m²

DIAGRAM M
1:200

9003 (Pt)

4009

4020

EMT D
46 m²

EMT N
48 m²

4008

4021

EMT C
59 m²

GUROMAN DRIVE
(NEW ROAD)

4010

4007

4022

EMT B
59 m²

DIAGRAM N
1:100

9003 (Pt)

4006

4023

EMT A
65 m²

EMT R
10 m²

4005

4025

EMT A
65 m²

PAPAYA LANE
(NEW ROAD)

(NEW ROAD)

EMT G
15 m²

4075

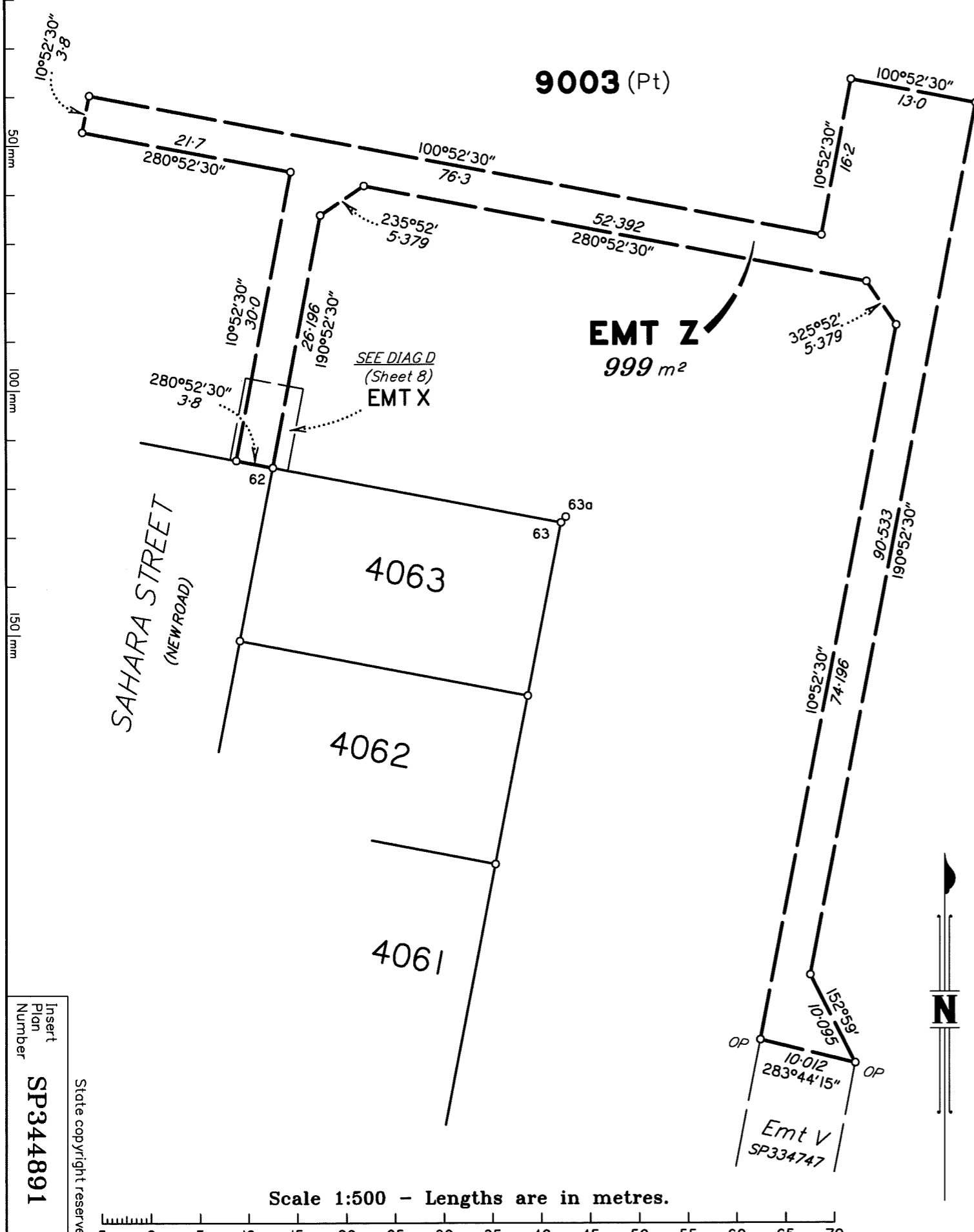
SAHARA STREET
(NEW ROAD)

State copyright reserved.

Insert Plan Number SP344891

DIAGRAM O

1: 500



Insert Plan Number
SP344891
State copyright reserved.

Scale 1:500 - Lengths are in metres.

M. G. A. COORDINATES GDA-94

STATION	EASTING	NORTHING	ZONE	P.U.	LINEAGE	METHOD	REMARKS
PM38438	498 673.106	6 933 933.473	56	0-011	Datum	SCDB	
PM59822	499 450.446	6 930 390.910	56	0-011	Datum	SCDB	
PM204989	498 966.019	6 932 183.075	56	0-018	Derived	Quick Static	
63a	499 325.286	6 932 223.505	56	0-018	Derived	Quick Static	Pin

Adjustment - QLD ANJ 18.07 (16-July-2018)

PERMANENT MARKS

PM	ORIGIN	BEARING	DIST	NO	TYPE
13-OPM	IS319514	251°07'	4.949	204989	Standard

REFERENCE MARKS

STN	TO	ORIGIN	BEARING	DIST
10	O Screw in Channel	IS319514	188°56'	6.657
14	O Screw in Conc	IS319514	253°27'	8.711
21	O Screw in Conc	IS319514	216°21'	5.372
31	O Screw in Conc	IS319514	178°18'	4.996
63a	Pin			at Station

Additional reference marks to be placed following road construction. (see IS323906).

Reinstatement Report

This plan is part of a standard 3.22 large scale land development, using the coordinate framework established on IS266917.

All original corners are fixed by marks and reference marks in agreement with previous plans.

Original corner marks and occupation at lots 4001, 4002 and at the rear of lots 4026-4032 & 4049-4061 are from IS319514.

Plans used: SP334747 & IS319514.