

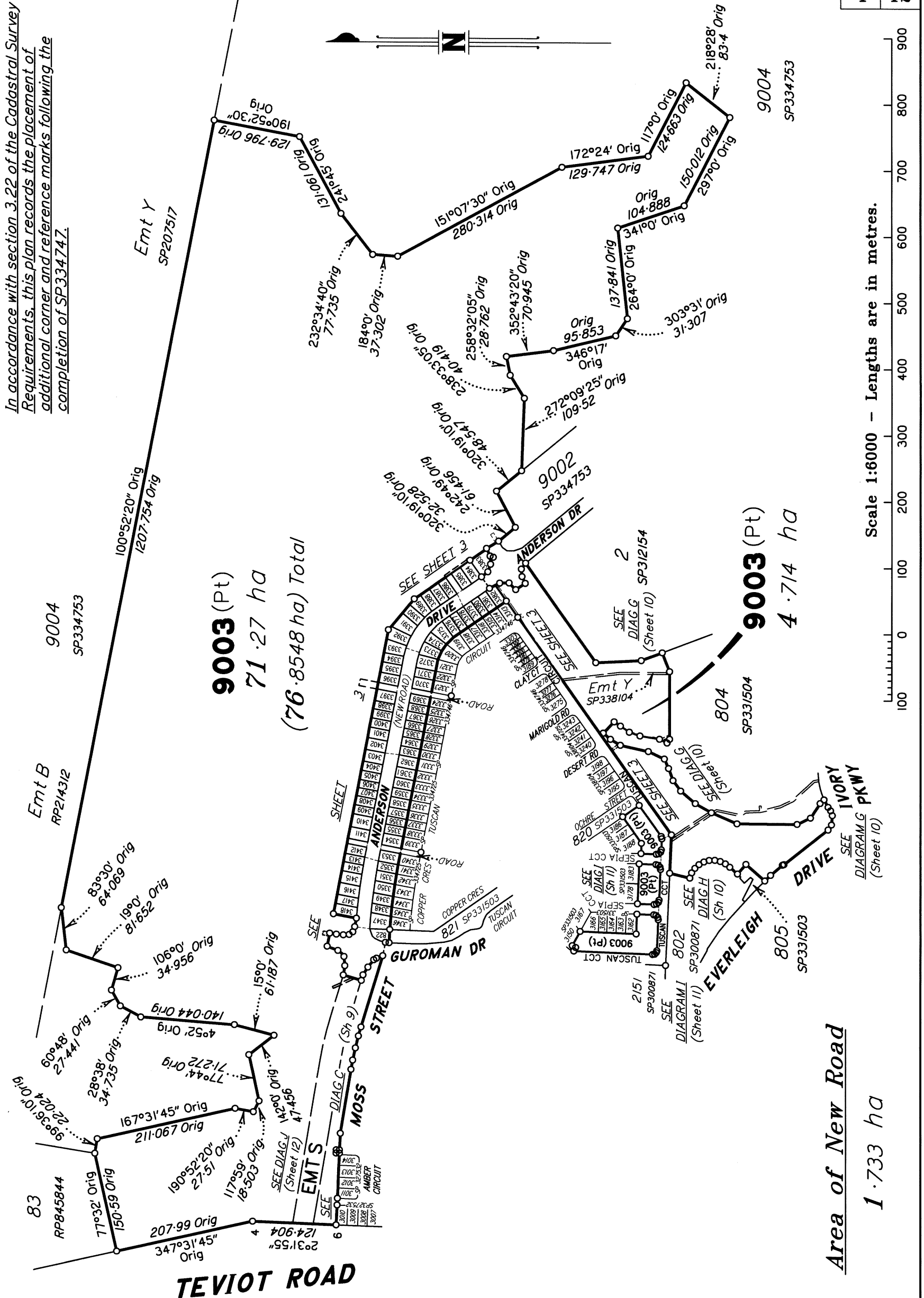
See Sheet 12 for Reference Marks, Permanent Marks, & MGA Coordinates Tables.

See Sheet 12 for Reinstatement Report.

Original information compiled from SP3334746 in the Department of Resources.

In accordance with section 3.22 of the Cadastral Survey Requirements, this plan records the placement of additional corner and reference marks following the completion of SP3334747.

Peg placed at all new corners, unless otherwise stated, after registration of SP3334747.



Scale 1:6000 - Lengths are in metres.

Area of New Road
1.733 ha

SAUNDERS HAVILL GROUP PTY LTD (ACN 144 972 949) hereby certify that the land comprised in this plan was surveyed by the corporation, by Dale Jonathon DELAFORCE, registered surveyor, for whose work the corporation accepts responsibility, under the supervision of Michael KLEINE, cadastral surveyor, and that the plan is accurate, that the said survey was performed in accordance with the Survey and Mapping Infrastructure Act 2003 and Surveyors Act 2003 and associated Regulations and Standards and that the said survey was completed on 29/01/2024



M. Kleine
Authorised Signatory

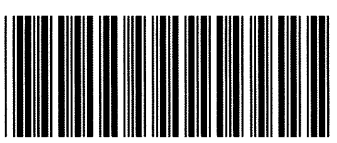
[Signature]
Authorised Signatory

Date: 06-02-2024

Plan of Identification Survey of additional corner and reference marks affecting Lots 822, 3347-3418 & 9003 on SP334747

LOCAL GOVERNMENT: LOGAN CITY LOCALITY: GREENBANK
Meridian: MGA (Zone 56) vide PSMs Survey Records: No

Scale: 1:6000
Format: STANDARD



IS319514

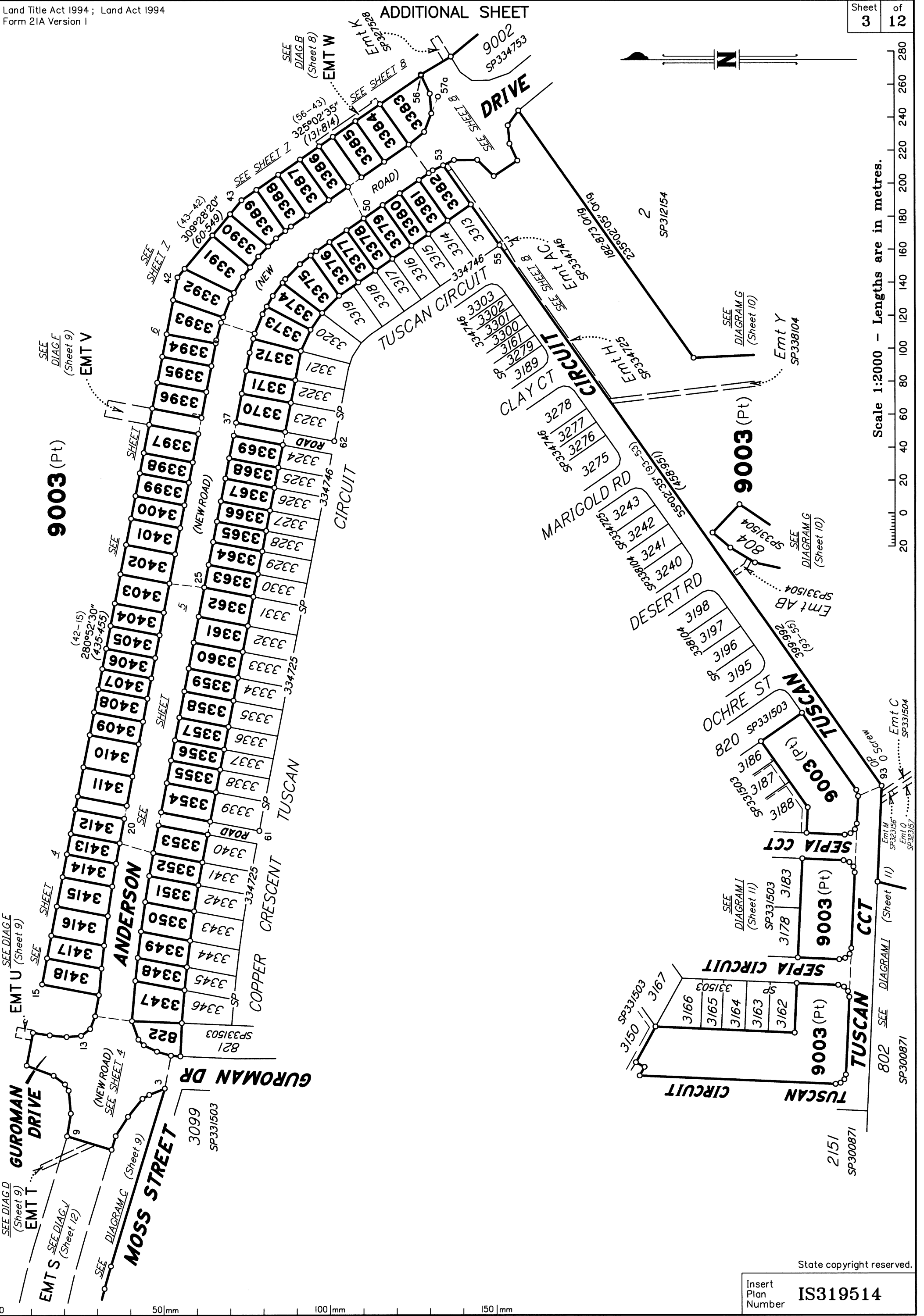
SHEET INTENTIONALLY LEFT BLANK

References :

Survey Advice: 2018-0912
Surveyor : 7598-P9.7

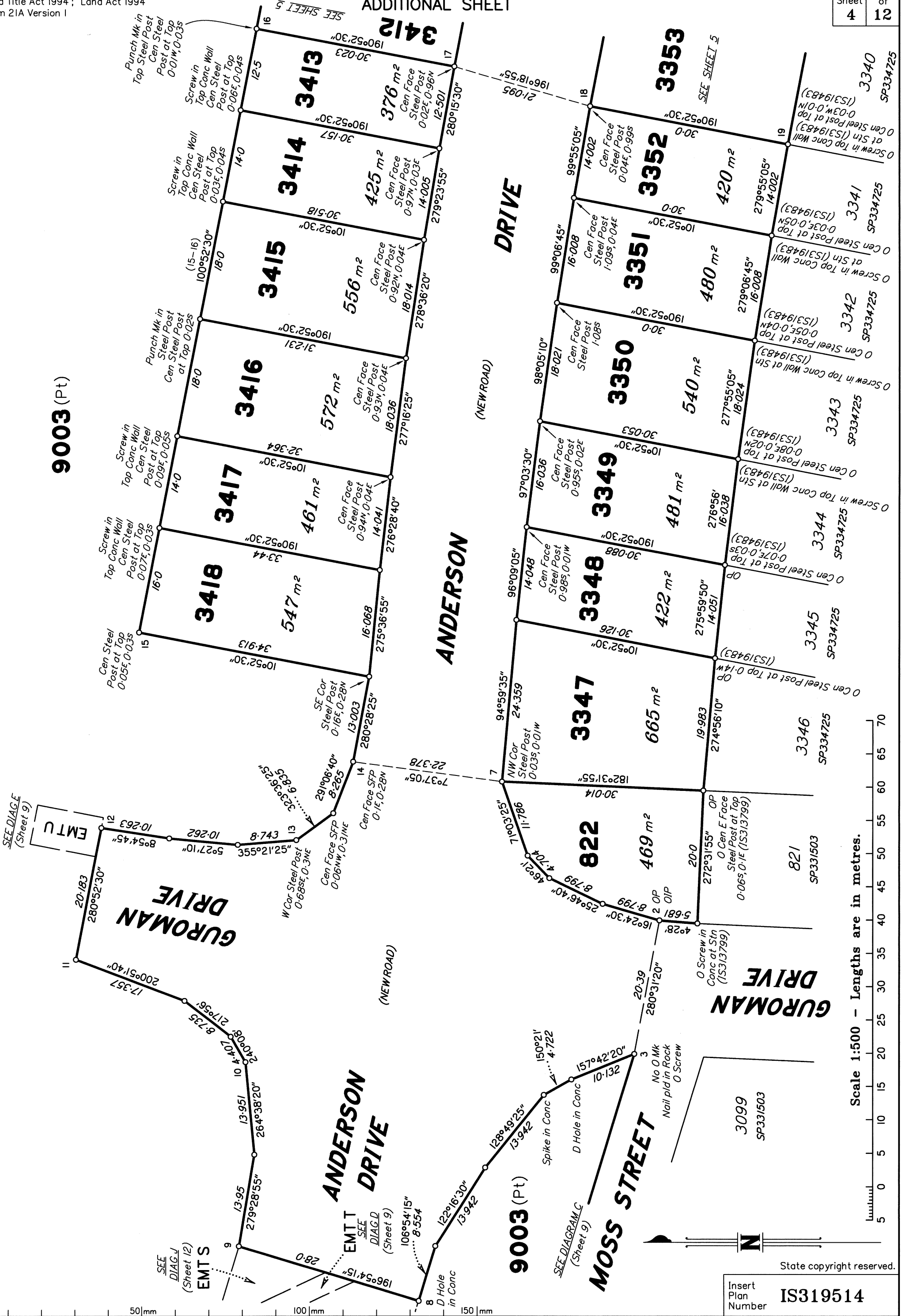
8. Insert
Plan
Number

IS319514



Scale 1:2000 - Lengths are in metres.

ADDITIONAL SHEET



9003 (Pt)

DRIVE

ANDERSON (NEW ROAD)

GURUMAN DRIVE

ANDERSON DRIVE (NEW ROAD)

MOSS STREET

Scale 1:500 - Lengths are in metres.



State copyright reserved.

Insert Plan Number **IS319514**

SEE DIAG J (Sheet 12)
EMTS

SEE DIAG I (Sheet 9)
EMTU

SEE DIAGRAM C (Sheet 9)

SEE DIAG D (Sheet 9)

SEE SHEET 5

SEE SHEET 5

SEE SHEET 5

SEE SHEET 5

SEE SHEET 5

Punch Mk in Top Steel Post

Screw in Top Conc Wall

Punch Mk in Steel Post

Screw in Top Conc Wall

Screw in Top Conc Wall

Cen Steel Post at Top

SE Cor Steel Post

W Cor Steel Post

Cen Face SFP

NW Cor Steel Post

Spike in Conc

D Hole in Conc

O Screw in Conc at Stn

O Cen E Face Steel Post at Top

O Cen Steel Post at Top

O Cen Steel Post at Top

O Cen Steel Post at Top

O Cen Steel Post at Top

O Cen Steel Post at Top

O Cen Steel Post at Top

O Cen Steel Post at Top

O Cen Steel Post at Top

O Cen Steel Post at Top

O Cen Steel Post at Top

O Cen Steel Post at Top

O Cen Steel Post at Top

O Cen Steel Post at Top

O Cen Steel Post at Top

O Cen Steel Post at Top

O Cen Steel Post at Top

O Cen Steel Post at Top

O Cen Steel Post at Top

O Cen Steel Post at Top

O Cen Steel Post at Top

O Cen Steel Post at Top

O Cen Steel Post at Top

O Cen Steel Post at Top

O Cen Steel Post at Top

O Cen Steel Post at Top

O Cen Steel Post at Top

O Cen Steel Post at Top

O Cen Steel Post at Top

O Cen Steel Post at Top

O Cen Steel Post at Top

O Cen Steel Post at Top

O Cen Steel Post at Top

O Cen Steel Post at Top

O Cen Steel Post at Top

O Cen Steel Post at Top

O Cen Steel Post at Top

O Cen Steel Post at Top

O Cen Steel Post at Top

O Cen Steel Post at Top

O Cen Steel Post at Top

O Cen Steel Post at Top

O Cen Steel Post at Top

O Cen Steel Post at Top

O Cen Steel Post at Top

O Cen Steel Post at Top

O Cen Steel Post at Top

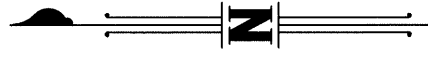
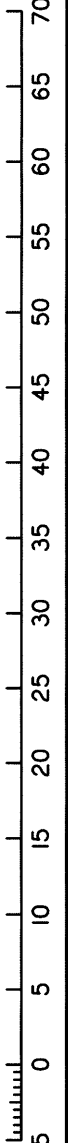
O Cen Steel Post at Top

O Cen Steel Post at Top

9003 (Pt)



Scale 1:500 - Lengths are in metres.



State copyright reserved.

Insert Plan Number IS319514

TUSCAN ROAD

DRIVE

ANDERSON

SEE SHEET 4

SEE SHEET 6

SEE SHEET 6

SEE SHEET 4

SEE SHEET 6

SEE SHEET 6

SEE SHEET 6

SEE SHEET 6

SEE SHEET 6

SEE SHEET 6

SEE SHEET 6

SEE SHEET 6

SEE SHEET 6

SEE SHEET 6

SEE SHEET 6

SEE SHEET 6

SEE SHEET 6



Scale 1:500 - Lengths are in metres.

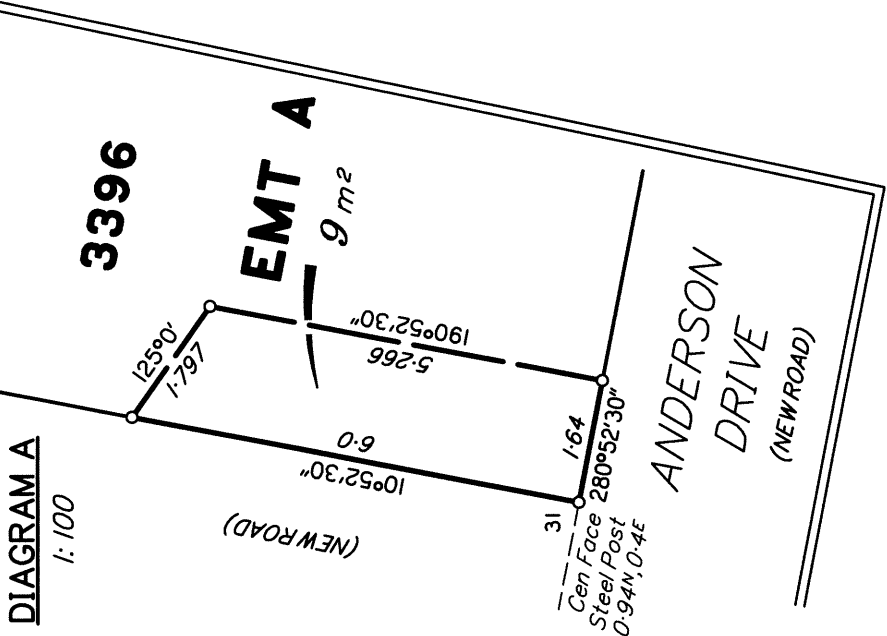
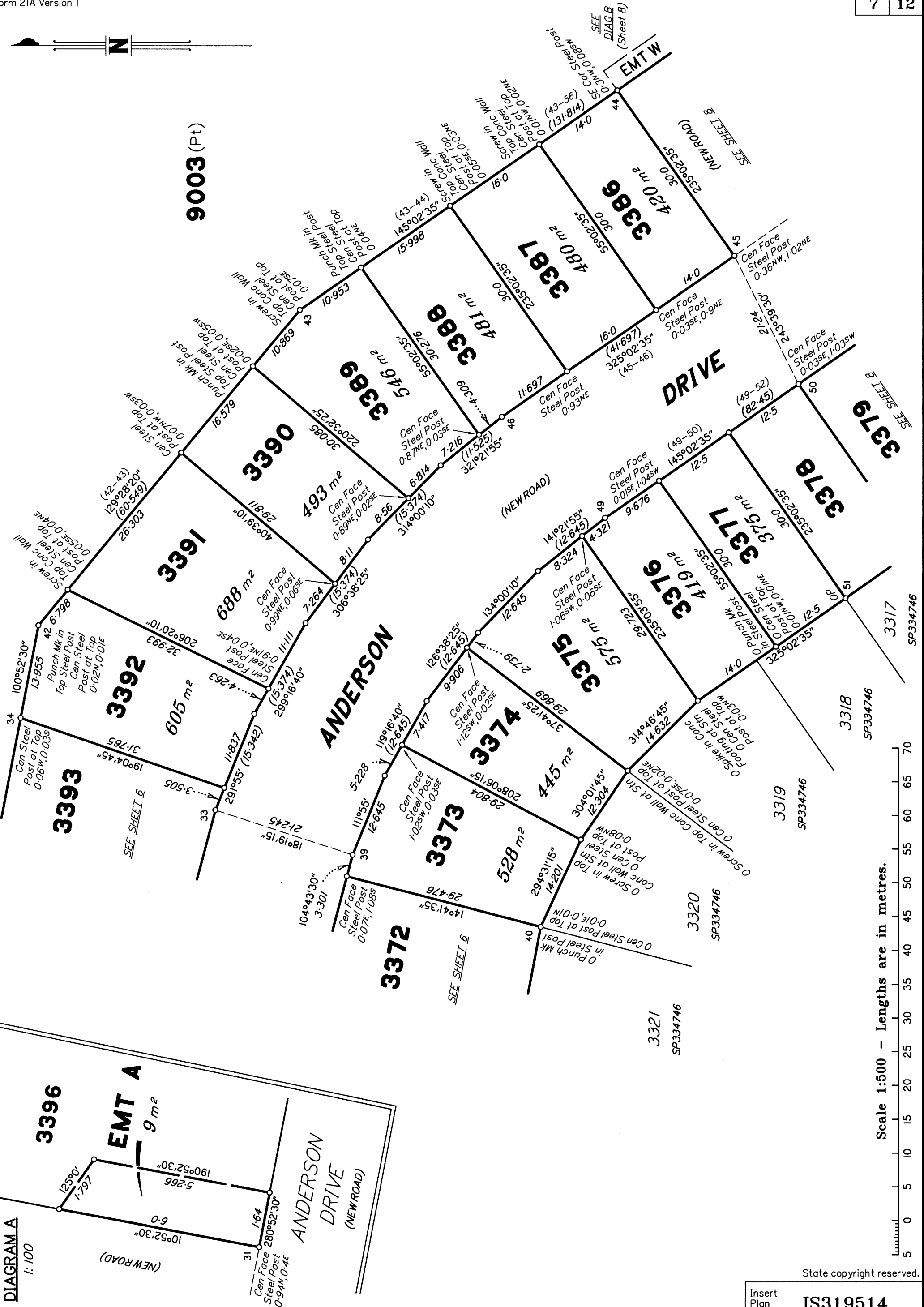
State copyright reserved.

Insert Plan Number **IS319514**

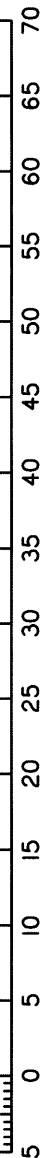
50mm 100mm 150mm



9003 (Pt)



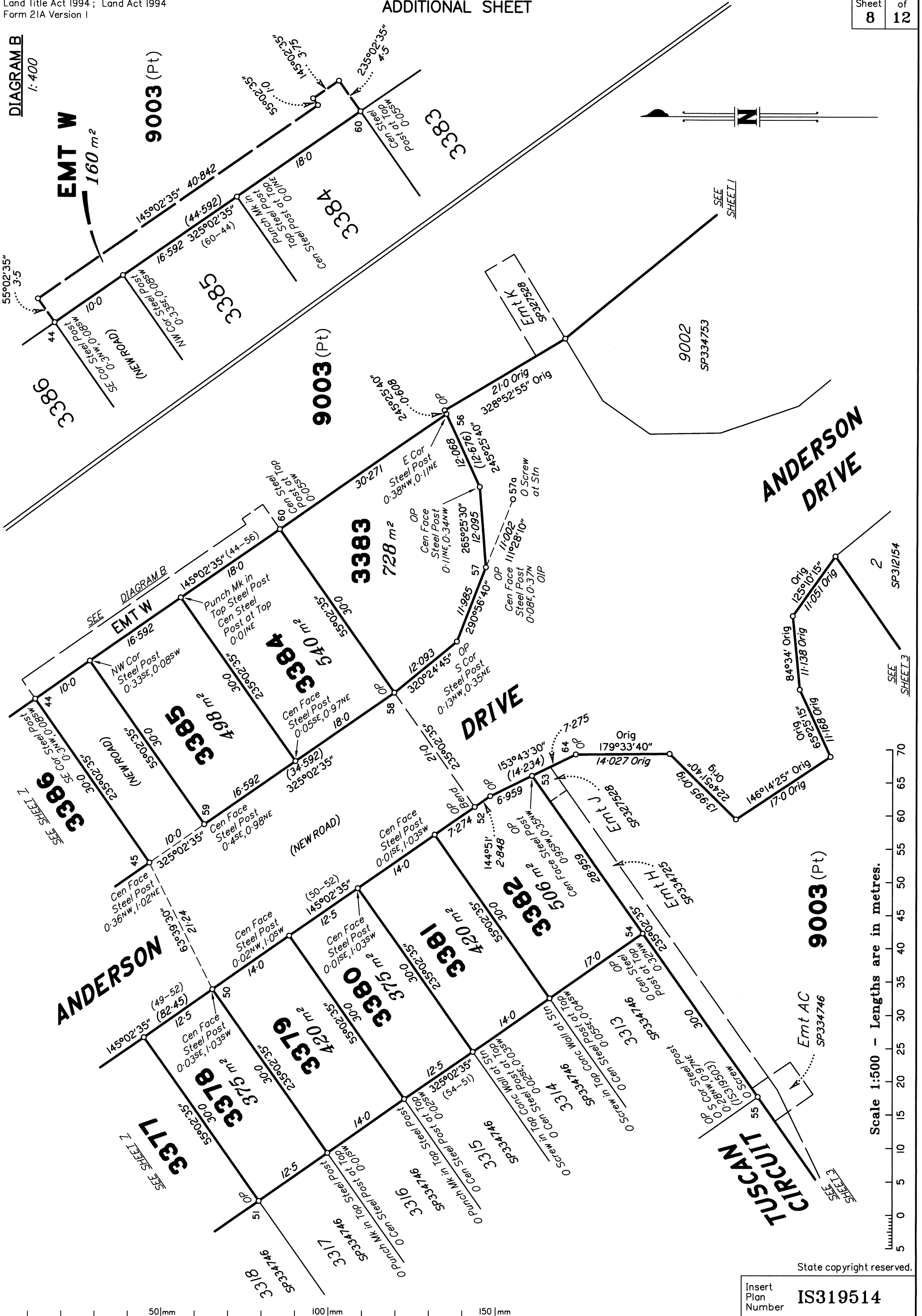
Scale 1:500 - Lengths are in metres.



State copyright reserved.

Insert Plan Number **IS319514**

DIAGRAM B
1:400



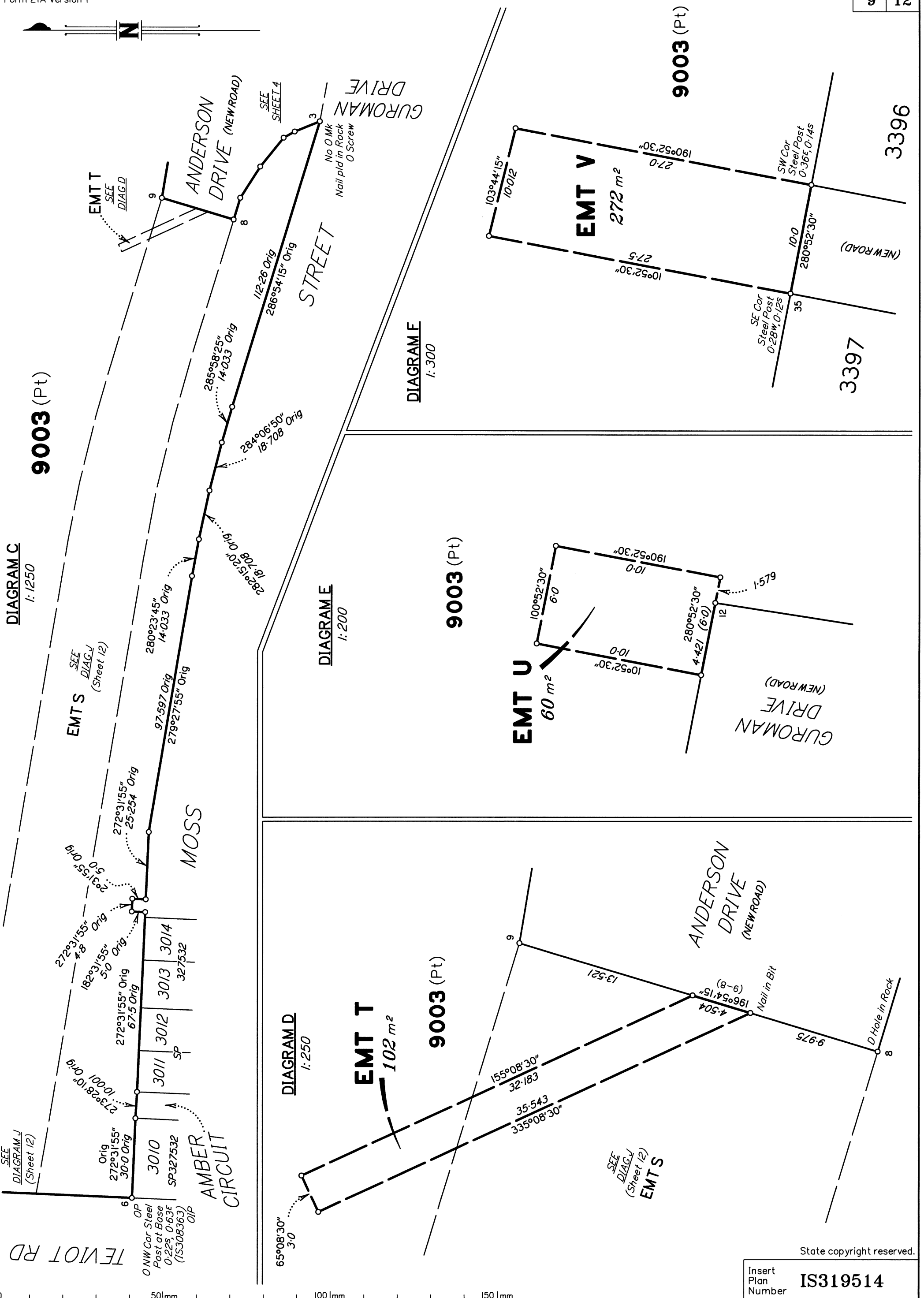


DIAGRAM C
1:1250

SEE
DIAGRAM J
(Sheet 12)

EMT S
SEE
DIAG. J
(Sheet 12)

DIAGRAM D
1:250

EMT T
102 m²

9003 (Pt)

DIAGRAM E
1:200

EMT U
60 m²

9003 (Pt)

DIAGRAM F
1:300

EMT V
272 m²

9003 (Pt)

TEWLOT RD

0 NW Cor Steel Post at Base 0-225, 0-63E (15308363) OIP

AMBER CIRCUIT

ANDERSON DRIVE (NEW ROAD)

GURUMAN DRIVE (NEW ROAD)

State copyright reserved.

Insert Plan Number **IS319514**

50 mm 100 mm 150 mm

DIAGRAM G

1:1250

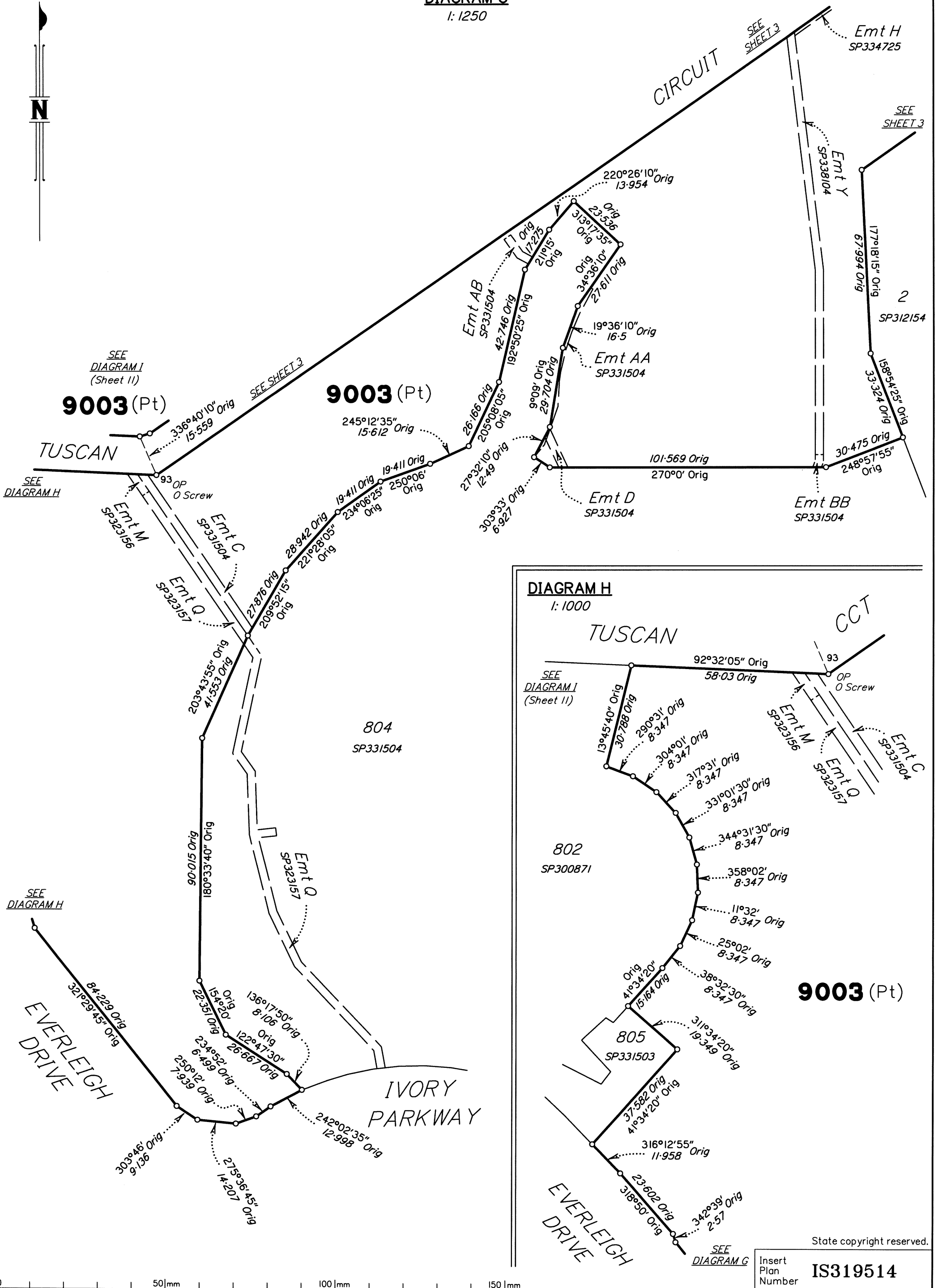
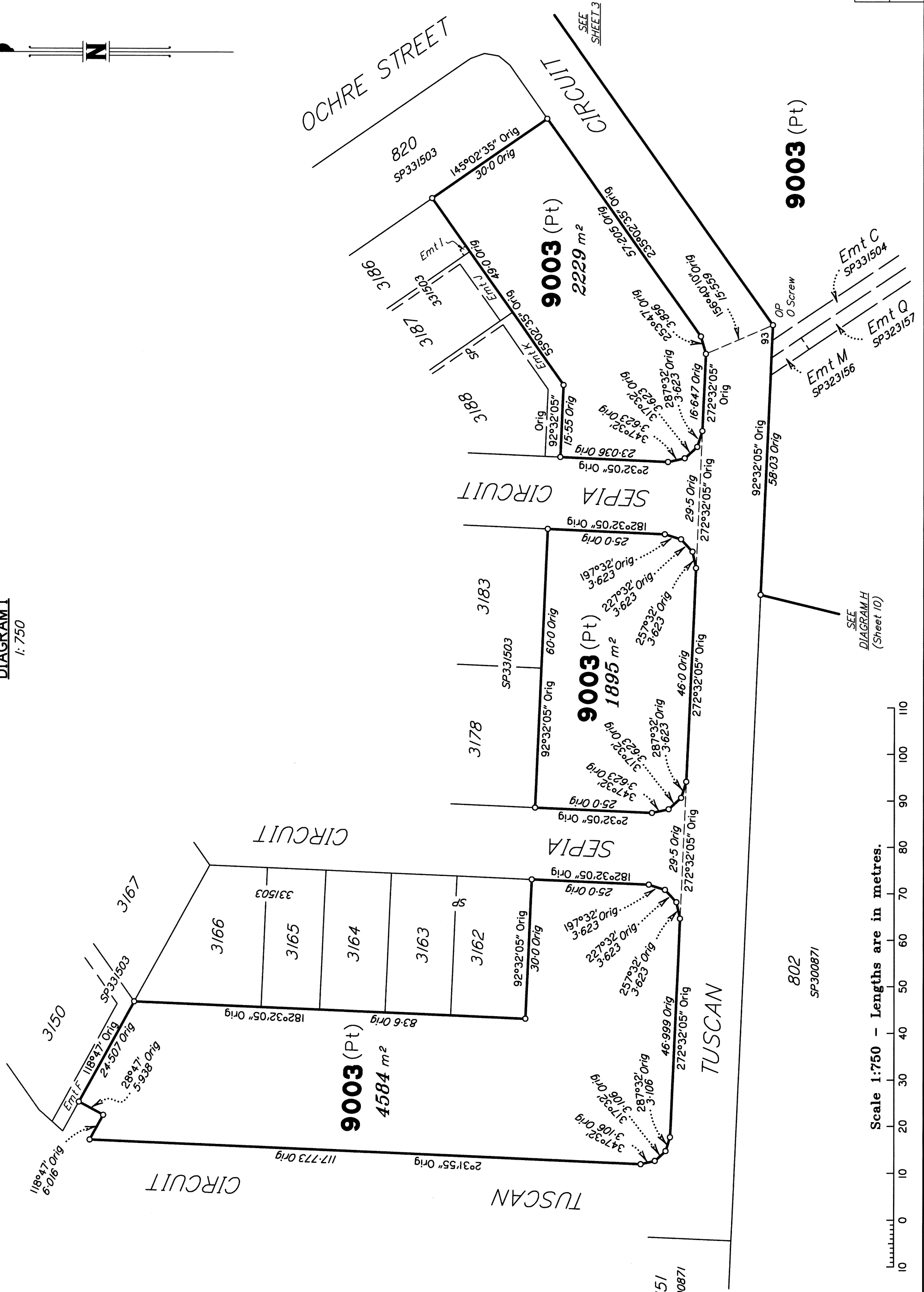




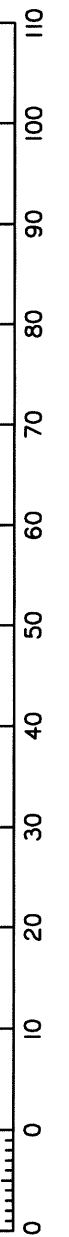
DIAGRAM I
1:750



SEE DIAGRAM H (Sheet 10)

SEE SHEET 3

Scale 1:750 - Lengths are in metres.



802
SP300871

9003 (Pt)

9003 (Pt)
1895 m²

9003 (Pt)
2229 m²

9003 (Pt)
4584 m²

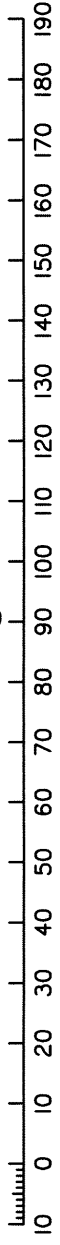
Insert Plan Number IS319514

State copyright reserved.

0 50mm 100mm 150mm

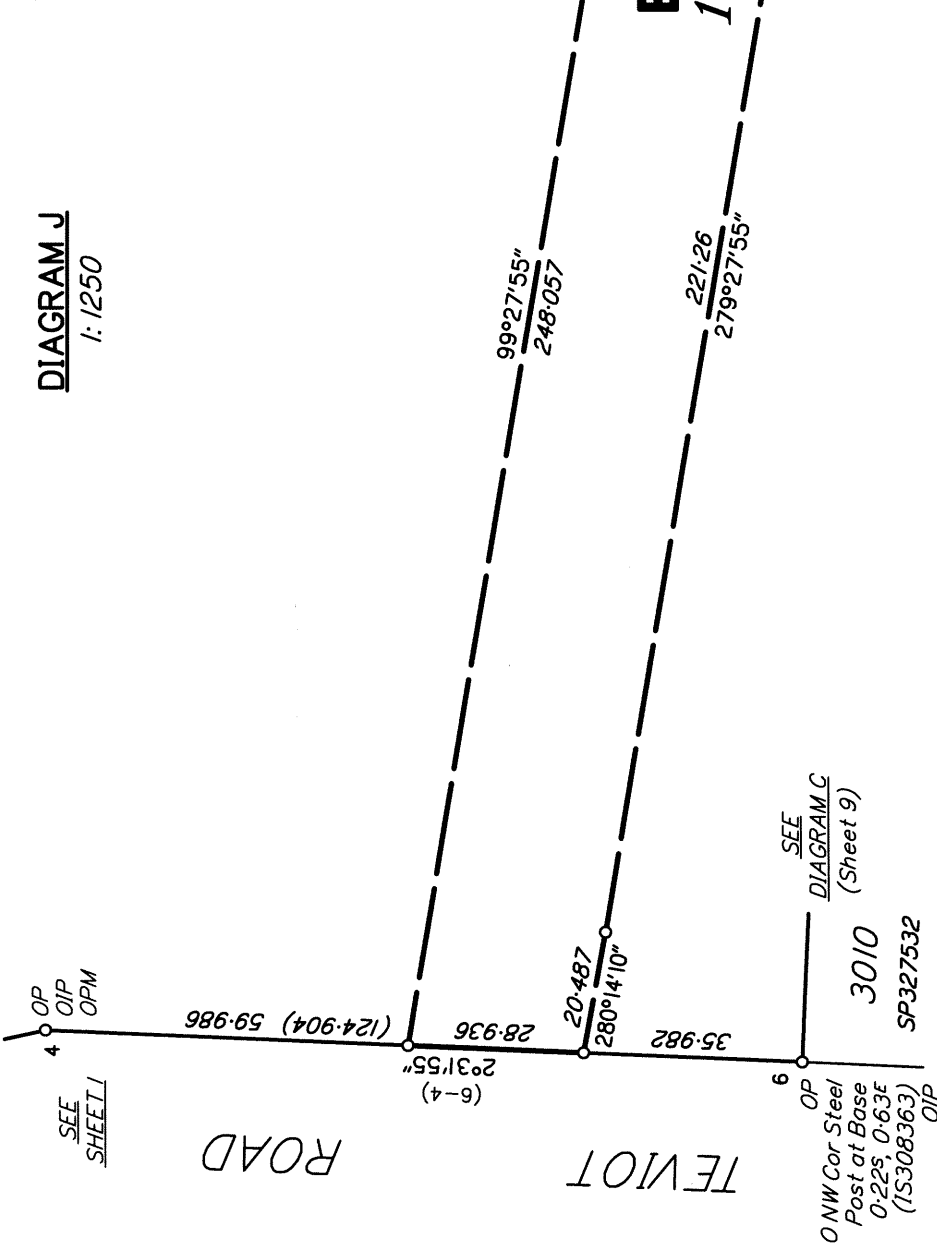
DIAGRAM J
1:1250

Scale 1:1250 - Lengths are in metres.



9003 (Pt)

EMT S
1.086 ha



| STATION | EASTING | NORTHING | ZONE | P.U. | LINEAGE | METHOD | REMARKS |
|----------|-------------|---------------|------|-------|---------|--------------|-----------------|
| PM38438 | 498 673.106 | 6 933 933.473 | 56 | 0-011 | Datum | SCDB | |
| PM59822 | 499 450.446 | 6 930 390.910 | 56 | 0-011 | Datum | SCDB | |
| PM203517 | 498 539.763 | 6 932 388.766 | 56 | 0-012 | Derived | Quick Static | |
| 57a | 499 538.710 | 6 931 969.525 | 56 | 0-016 | Derived | Quick Static | 0 Screw in Kerb |

| STN | TO | ORIGIN | BEARING | DIST |
|-----|-----------------|----------|------------|--------|
| 2 | OIP | IS313799 | 308°08' | 1.742 |
| 3 | 0 Screw in Kerb | IS308389 | 262°41' | 7.656 |
| 4 | OIP | RP845844 | 268°36' | 1.234 |
| 6 | OIP | IS308363 | 287°27'30" | 8.957 |
| 55 | 0 Screw in Conc | IS319503 | 246°26'50" | 20.581 |
| 57 | OIP (now gone) | IS302578 | 288°01' | 2.962 |
| 57a | 0 Screw in Kerb | IS302578 | at Station | |
| 61 | OIP | IS319483 | 280°53' | 2.003 |
| 61 | 0 Screw in Kerb | IS319483 | 186°42' | 5.026 |
| 62 | 0 Screw in Conc | IS319503 | 231°07' | 4.365 |
| 93 | 0 Screw in Conc | IS313799 | 13°32' | 6.257 |

Adjustment - QLD ANU 18.07 (16-July-2018)

PERMANENT MARKS

| PM | ORIGIN | BEARING | DIST | NO | TYPE |
|-------|----------|----------|--------|--------|----------|
| 4-OPM | SP300871 | 0°16'30" | 59.905 | 203517 | Standard |

Additional permanent mark placed after registration of SP33474Z.

| PM | ORIGIN | BEARING | DIST | NO | TYPE |
|-------|--------|---------|-------|--------|----------|
| 13-PM | | 251°07' | 4.949 | 204989 | Standard |

Additional reference marks placed after registration of SP33474Z.

| STN | TO | ORIGIN | BEARING | DIST |
|-----|-------------------|--------|------------|--------|
| 7 | Screw in Conc Pin | | 275°07'10" | 10.866 |
| 8 | Screw in Channel | | 16°25' | 0.821 |
| 10 | Screw in Conc | | 188°56' | 6.657 |
| 14 | Screw in Conc Pin | | 253°27' | 8.711 |
| 20 | Screw in Conc | | 42°24' | 0.977 |
| 21 | Screw in Kerb | | 216°21' | 5.372 |
| 23 | Screw in Kerb | | 197°52' | 3.914 |
| 25 | Screw in Kerb | | 4°09' | 4.958 |
| 27 | Screw in Conc Pin | | 326°22' | 1.023 |
| 28 | Screw in Conc Pin | | 33°02' | 6.247 |
| 30 | Screw in Conc Pin | | 90°56' | 0.614 |
| 31 | Screw in Conc | | 178°18' | 4.996 |
| 33 | Screw in Kerb | | 163°12' | 5.059 |
| 36 | Screw in Conc Pin | | 134°55' | 1.321 |
| 37 | Screw in Conc | | 341°37' | 6.542 |
| 39 | Screw in Kerb | | 338°07' | 6.265 |
| 45 | Screw in Kerb | | 246°46' | 3.941 |
| 46 | Screw in Kerb | | 283°44' | 6.259 |
| 49 | Screw in Kerb | | 9°31' | 6.734 |
| 50 | Screw in Kerb | | 48°31' | 4.89 |
| 64 | Screw in Kerb Pin | | 339°33' | 4.946 |
| 64 | Screw in Channel | | 132°00'50" | 8.119 |

Reinstatement Report

This plan is part of a standard 3.22 large scale land development, using the coordinate framework established on IS266917. All original corners are fixed by marks and reference marks in agreement with previous plans.

Original corner marks and occupation at the rear of lots 3362-3382 are from IS319503.

Plans used: SP334746, IS302578, IS308363, IS313799, IS319483 & IS319503.

State copyright reserved.

Insert Plan Number

IS319514