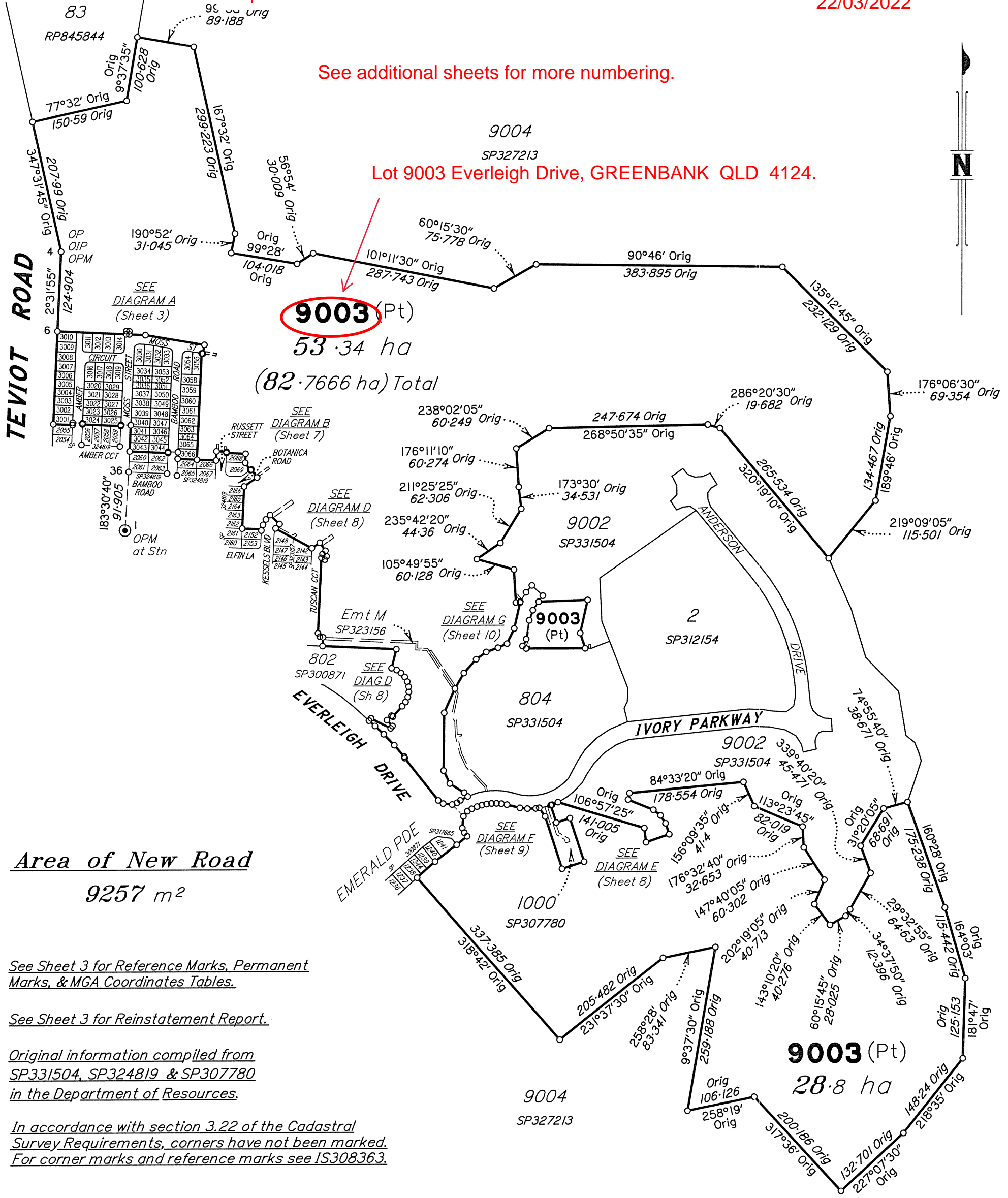


Req# 3193519

22/03/2022

See additional sheets for more numbering.

9004
SP327213
Lot 9003 Everleigh Drive, GREENBANK QLD 4124.



Area of New Road
9257 m²

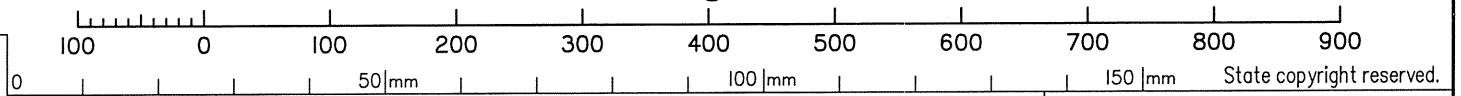
See Sheet 3 for Reference Marks, Permanent Marks, & MGA Coordinates Tables.

See Sheet 3 for Reinstatement Report.

Original information compiled from SP331504, SP324819 & SP307780 in the Department of Resources.

In accordance with section 3.22 of the Cadastral Survey Requirements, corners have not been marked. For corner marks and reference marks see IS308363.

Scale 1:6000 - Lengths are in metres.



Plan of Lots 3001-3014, 3016-3055, 3058-3066 & 9003 and Easement Z in Lot 9003

Cancelling Lot 9003 on SP331504

LOCAL GOVERNMENT: LOGAN CITY

LOCALITY: GREENBANK

Meridian: MGA (Zone 56) vide PSMs

Survey Records: No

Scale: 1:6000

Format: STANDARD



SP327532

SAUNDERS HAVILL GROUP

SAUNDERS HAVILL GROUP PTY LTD (ACN 144 972 949) hereby certify that the land comprised in this plan was surveyed by the corporation, by Clinton Miles URQUHART, surveying graduate, for whose work the corporation accepts responsibility, under the supervision of Michael KLEINE, cadastral surveyor, and that the plan is accurate, that the said survey was performed in accordance with the Survey and Mapping Infrastructure Act 2003 and Surveyors Act 2003 and associated Regulations and Standards and that the said survey was completed on 22/02/2022



M. Kleine
Authorised Signatory

Authorised Signatory
Date: 7/03/2022

7598 SP327532.DWG TBC

(Dealing No.)

4. Lodged by

(Include address, phone number, email, reference, and Lodger Code)

Existing		Created		
Title Reference	Description	New Lots	Road	Secondary Interests
51275679	Lot 9003 on SP331504	3001-3014, 3016-3055, 3058-3066 & 9003	New Rd	Emt Z

EXISTING ADMINISTRATIVE ADVICE ALLOCATIONS

Administrative Advice	Lots to be Encumbered
719945618 (Veg Notice)	9003

ENCUMBRANCE EASEMENT ALLOCATIONS

Easement	Lots to be Encumbered
721476938 (Emt C on SP331504)	9003
721476938 (Emt D on SP331504)	9003
720917162 (Emt L on SP323156)	9003
720917162 (Emt M on SP323156)	9003
721158068 (Emt P on SP323157)	9003
721158069 (Emt Q on SP323157)	9003
721173275 (Emt W on SP324819)	9003
721173275 (Emt X on SP324819)	9003
721173275 (Emt Y on SP324819)	9003
721476939 (Emt AA on SP331504)	9003

Emts R-V on SP324819 are fully absorbed by New Road.

3001-3014, 3016-3055, 3058-3066 & 9003	Por 434
Lots	Orig

2. Orig Grant Allocation :

3. References :
Dept File :
Local Govt :
Surveyor : 7598-P9.1 Survey Advice: 2018-0912

5. Passed & Endorsed :

By: SAUNDERS HAVILL GROUP PTY LTD
Date: 7/03/2022
Signed: *[Signature]*
Designation: Endorsing Officer

6. Building Format Plans only.

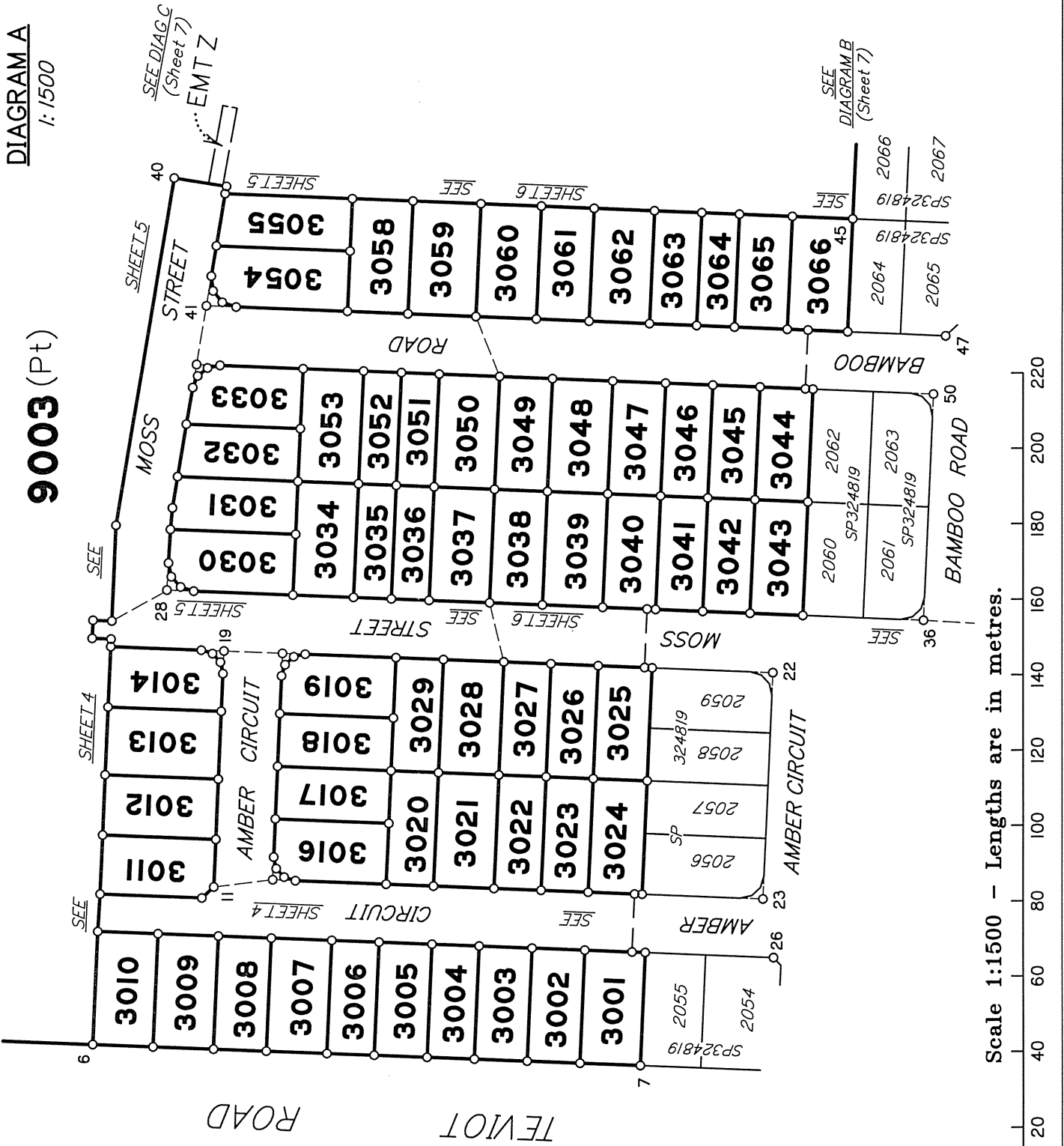
I certify that :
* As far as it is practical to determine, no part of the building shown on this plan encroaches onto adjoining lots or road;
* Part of the building shown on this plan encroaches onto adjoining * lots and road

.....
Cadastral Surveyor/Director* Date
*delete words not required

7. Lodgement Fees :

Survey Deposit	\$
Lodgement	\$
..... New Titles	\$
Photocopy	\$
Postage	\$
TOTAL	\$

8. Insert Plan Number **SP327532**



Scale 1:1500 - Lengths are in metres.

STN	TO	ORIGIN	BEARING	DIST
4	OIP	RP845844	268°36'	1-234
7	OIP	IS302593	273°31'	7-372
22	O Screw in Conc	IS302593	176°46'	1-134
22	OIP	IS302593	320°35'	1-844
23	O Screw in Kerb	IS302593	240°36'	1-302
23	OIP	IS302593	48°47'	1-718
26	O Screw in Conc	IS302593	102°48'	6-956
27	O Screw in Channel	IS302593	130°42'	5-094
36	O Screw in Kerb	IS302593	201°16'	1-448
36	OIP	IS302593	78°24'	2-657
38	O Screw in Channel	IS302593	224°31'	6-006
47	OIP	IS302593	153°55'	2-525
48	O Screw in Channel	IS302593	216°25'30"	7-244
49	OIP	IS302593	148°35'	5-642
50	O Screw in Kerb	IS302593	204°01'	2-57
50	OIP	IS302593	231°16'	3-351

Additional reference marks to be placed following road construction. (see IS308363).

Reinstatement Report

Original corners are fixed vide SP324819 and IS302593, in agreement with those plans.

Plans used: SP324819, SP331504 and IS302593.

M.G.A. COORDINATES GDA - 94

STATION	EASTING	NORTHING	ZONE	P.U.	LINEAGE	METHOD	REMARKS
PM38438	498 673.106	6 933 933.473	56	0-011	Datum	SCDB	
PM59822	499 450.446	6 930 390.910	56	0-011	Datum	SCDB	
PM203517	498 539.763	6 932 388.766	56	0-012	Derived	Quick Static	
PM203875	498 639.684	6 931 892.667	56	0-017	Derived	Quick Static	

Adjustment - QLD ANU 18.07 (16-July-2018)

PERMANENT MARKS

PM	ORIGIN	BEARING	DIST	NO	TYPE
1-OPM	IS302593	at Station		203875	Standard
4-OPM	SP300871	0°16'30"	59-905	203517	Standard



ROAD

TEVIOT

CIRCUIT

AMBER

AMBER (NEW ROAD) CIRCUIT

SEE SHEET 5
STREET
SHEET 5

Alternate addresses

OP
O Screw in E Face
Conc Wall 0.785E
Cen E Face Steel
Post at Base
0.125, 0.82E
OIP

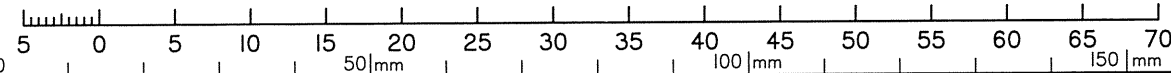
OP
Cen Face
Steel Post
0.15, 0.92E

O Screw in
Top Conc Wall
Cen Steel
Post at Top
0.12W, 0.01N

OP
NE Cor Steel Post
0.45W, 0.1N

Lots 3001-3014 & 3016-3024 are addressed off Amber Circuit, GREENBANK.
Lots 3025-3029 are addressed off Moss Street GREENBANK.

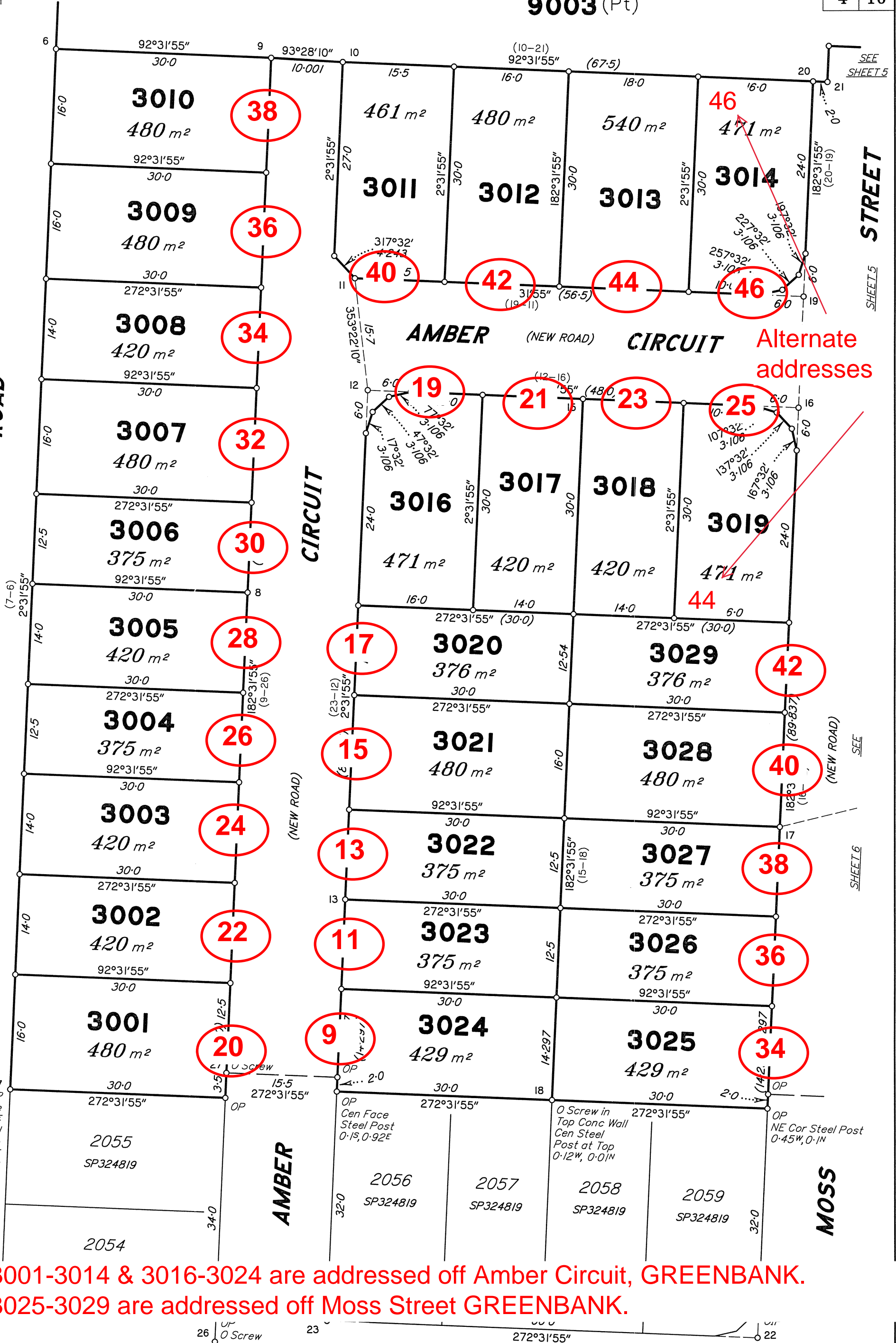
Scale 1:500 - Lengths are in metres.



AMBER CIRCUIT

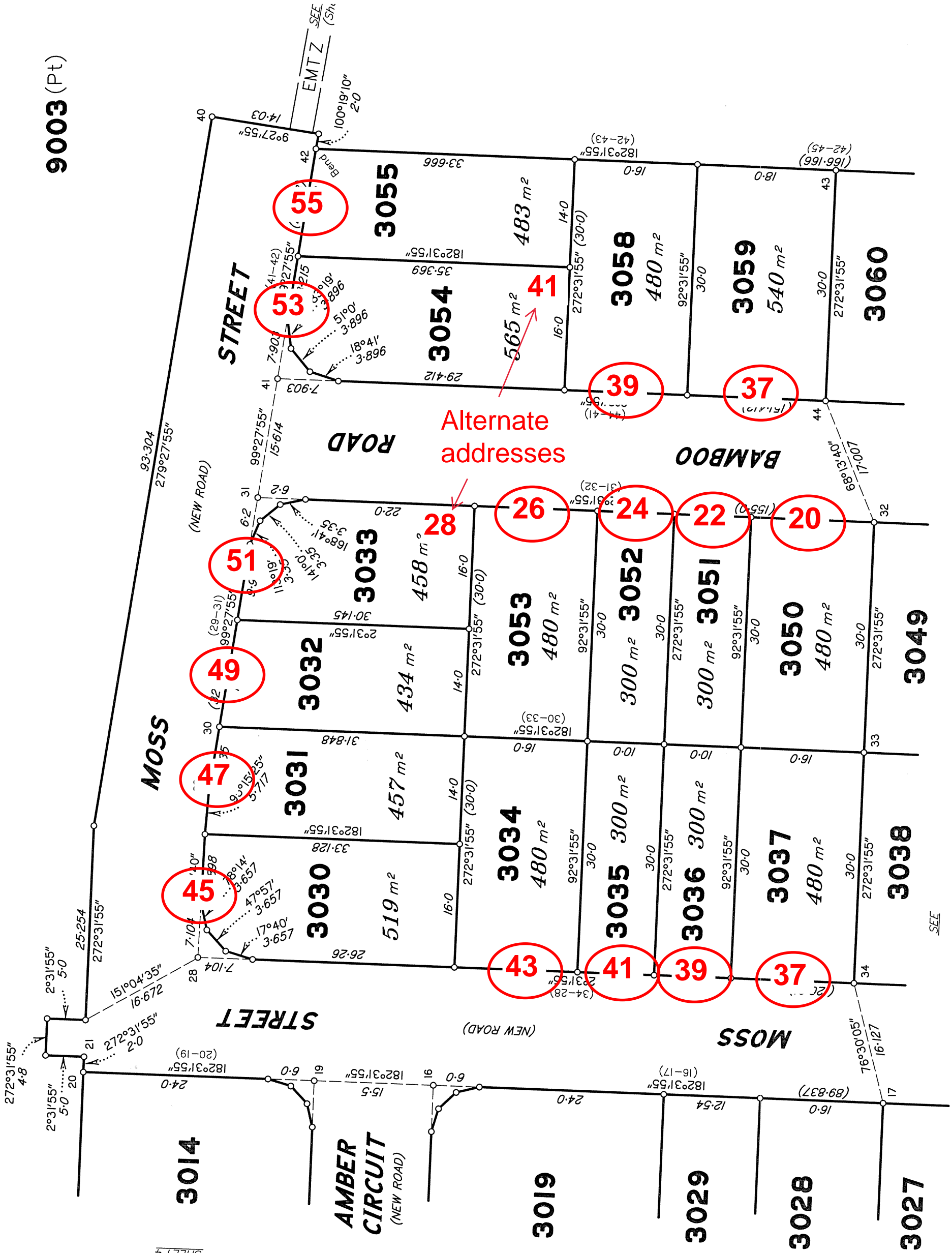
State copyright reserved.

Insert Plan Number SP327532

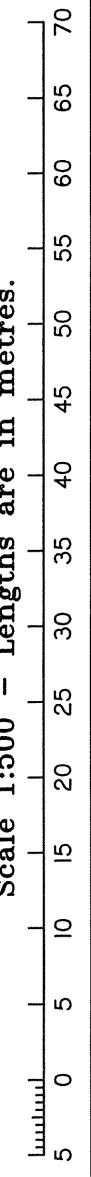


Lots 3050-3053 & 3058 & 3059 are addressed off Bamboo Road, GREENBANK.
Lots 3030-3037, 3054 & 3055 are addressed off Moss Street GREENBANK.

9003 (Pt)

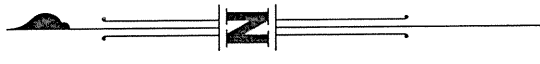


SHEET 6



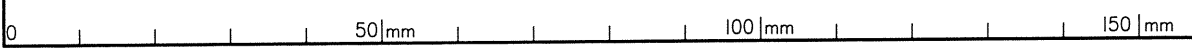
SEE

SEE



State copyright reserved.

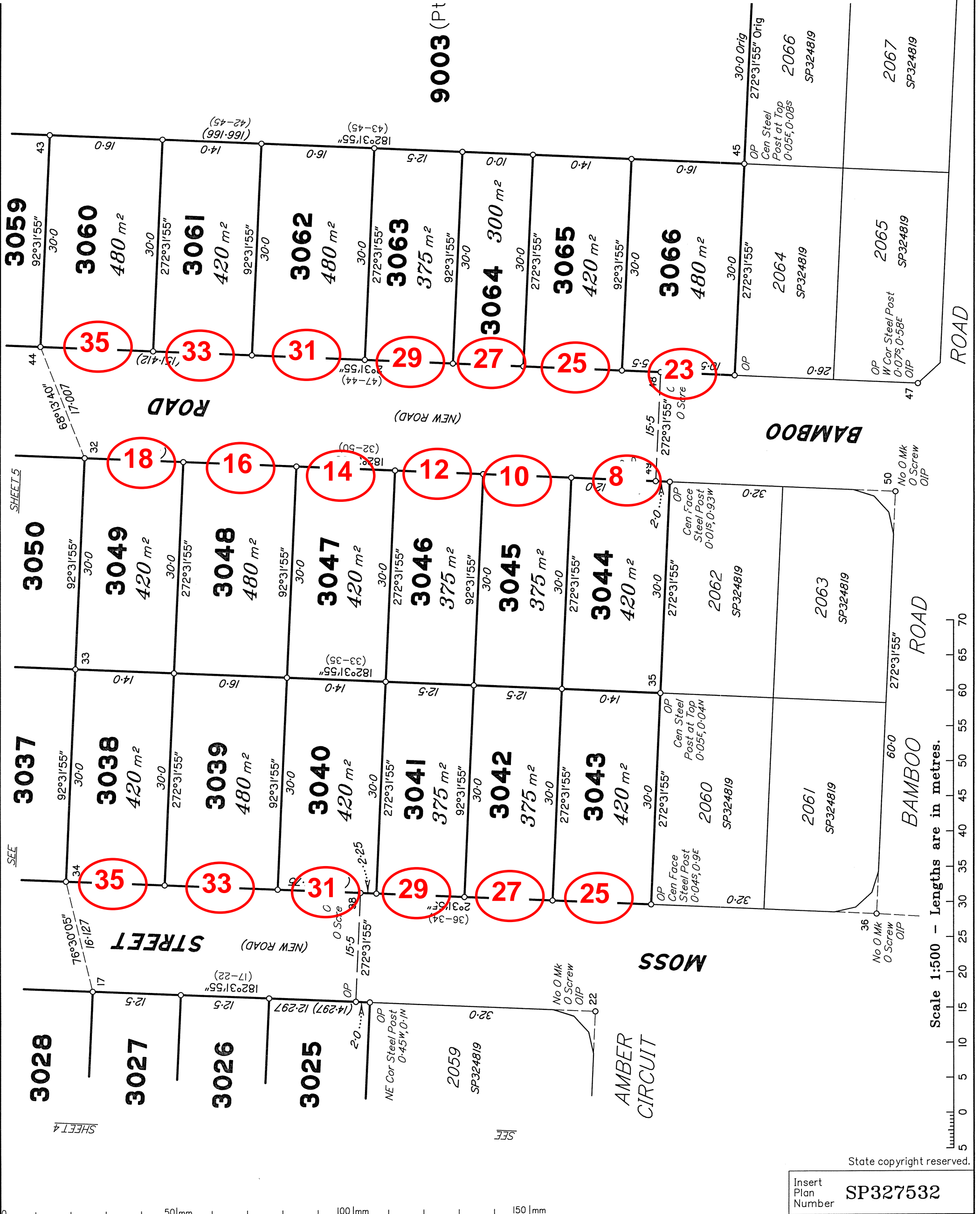
Insert Plan Number SP327532





RUSSETT STREET

Lots 3044-3049 & 3060-3066 are addressed off Bamboo Road, GREENBANK.
Lots 3038-3043, are addressed off Moss Street GREENBANK.



Scale 1:500 - Lengths are in metres.

State copyright reserved.

Insert Plan Number SP327532

DIAGRAM C
1:300

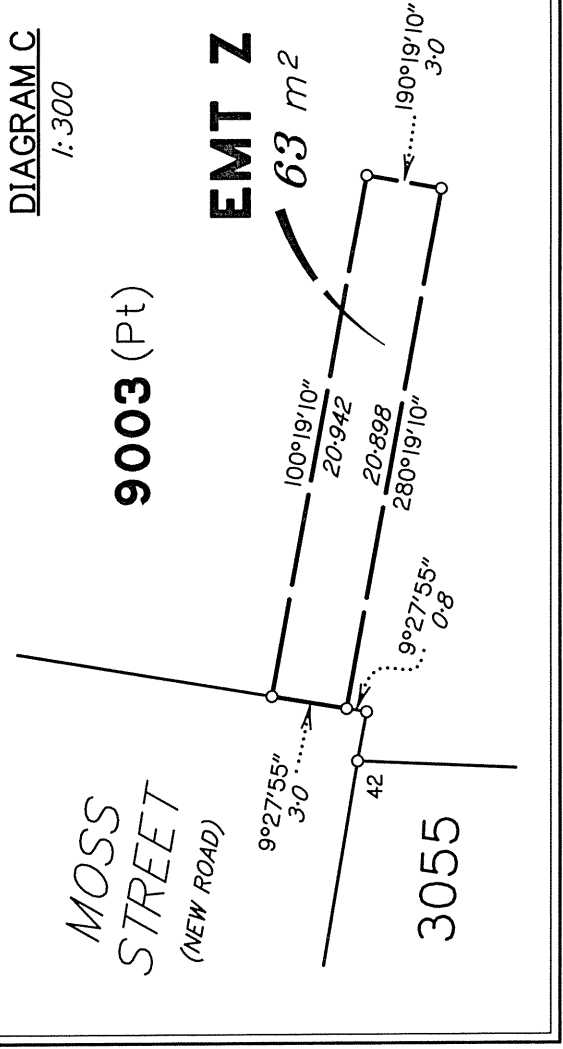
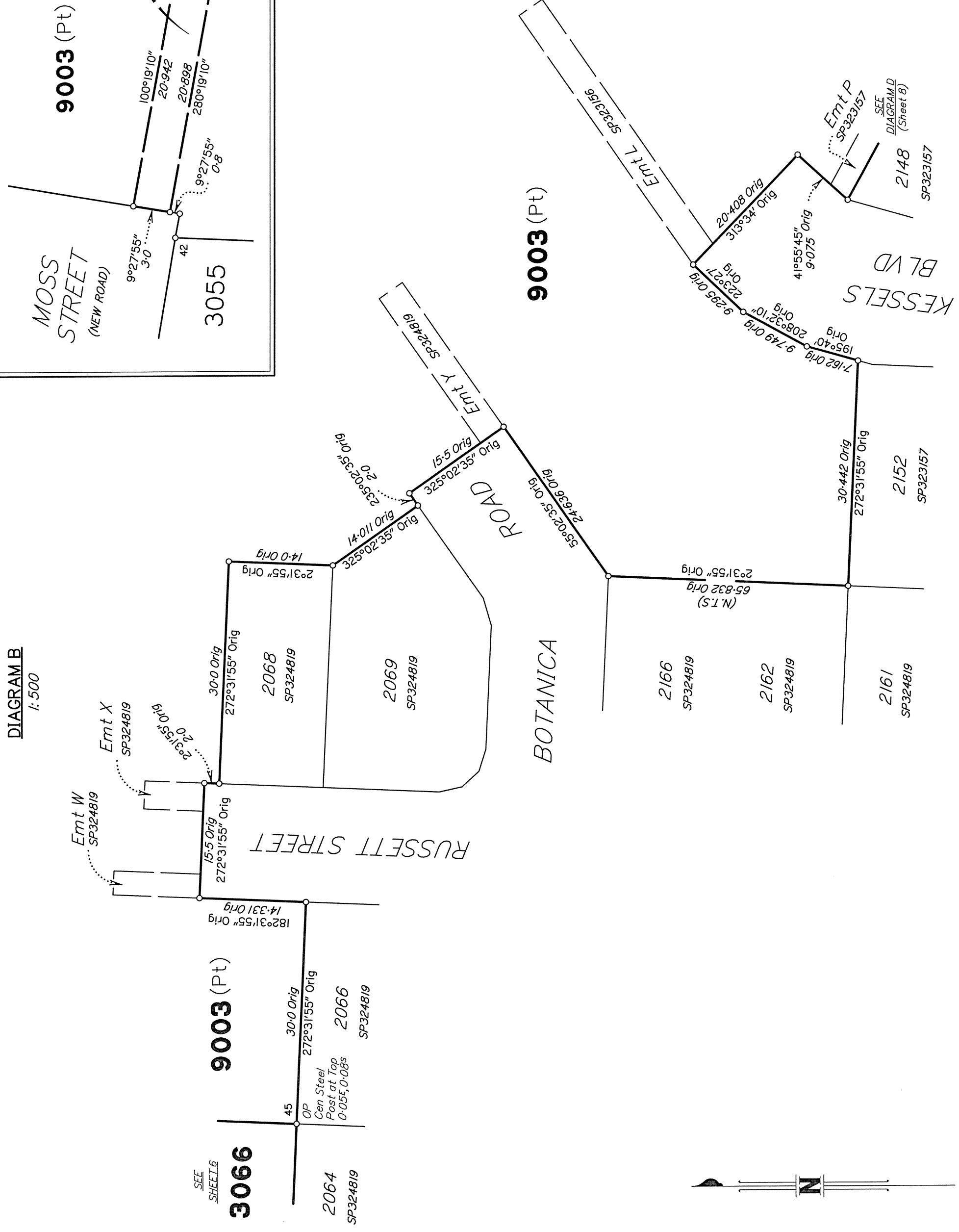


DIAGRAM B
1:500



SEE SHEET 6

3066

9003 (Pt)

2064

SP324819

2066

SP324819

RUSSETT STREET

ROAD

BOTANICA

9003 (Pt)

KESSELS
BLVD



DIAGRAM D
1:1000

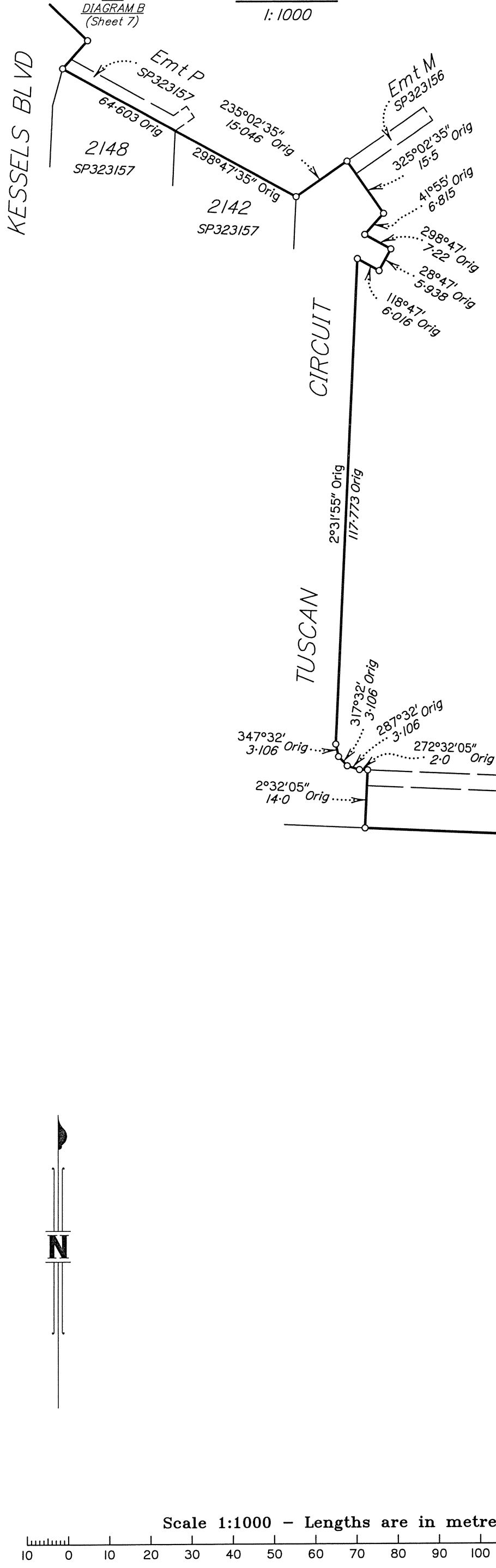
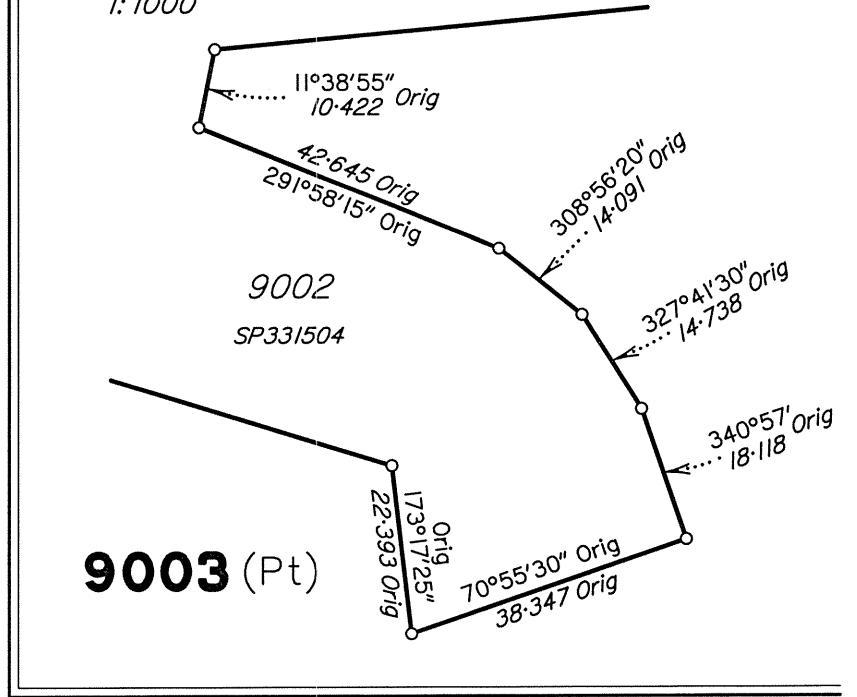


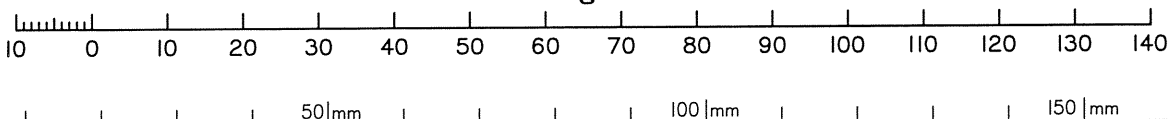
DIAGRAM E
1:1000



9003 (Pt)



Scale 1:1000 - Lengths are in metres.



SEE
DIAGRAM G
(Sheet 10)

State copyright reserved.

Insert
Plan
Number

SP327532

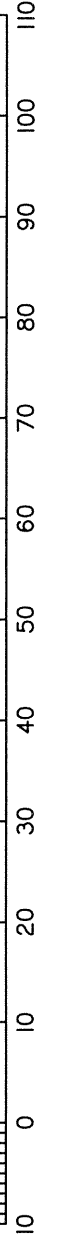
DIAGRAM F
1:750

SEE
DIAGRAM G
(Sheet 10)

9003 (Pt)

9003 (Pt)

Scale 1:750 - Lengths are in Metres.



Insert
Plan
Number

SP327532

State copyright reserved.

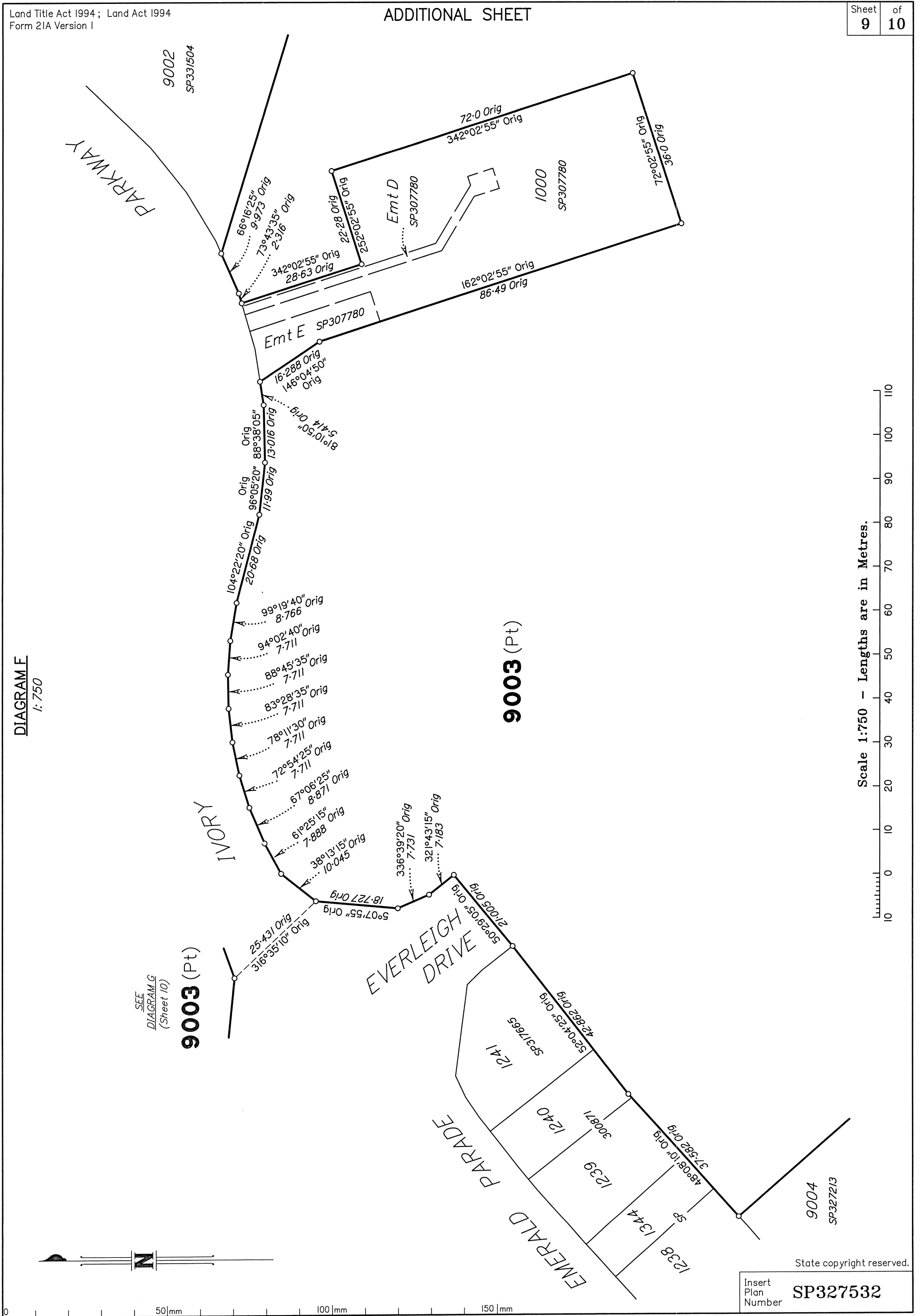


DIAGRAM G

1:1250



9003 (Pt)

9002
SP331504

9003 (Pt)
6266 m²

804
SP331504

SEE
DIAGRAM D
(Sheet 8)

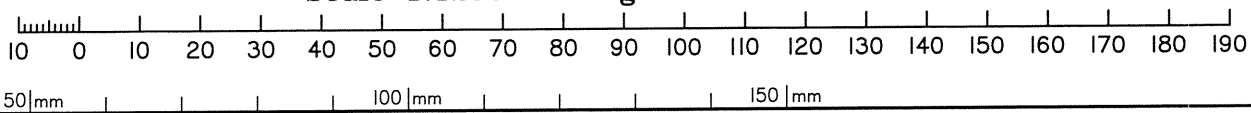
EVERLEIGH DRIVE

IVORY PARKWAY

9003 (Pt)

SEE
DIAGRAM F
(Sheet 9)

Scale 1:1250 - Lengths are in metres.



State copyright reserved.

Insert Plan Number **SP327532**

