

Land Title Act 1994 ; Land Act 1994
Form 21 Version 4

SURVEY PLAN

Sheet **1** of **10**

*Original information compiled from
SP307780 in the Department of Natural
Resources, Mines & Energy.*

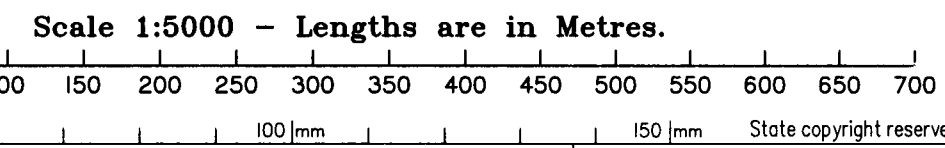
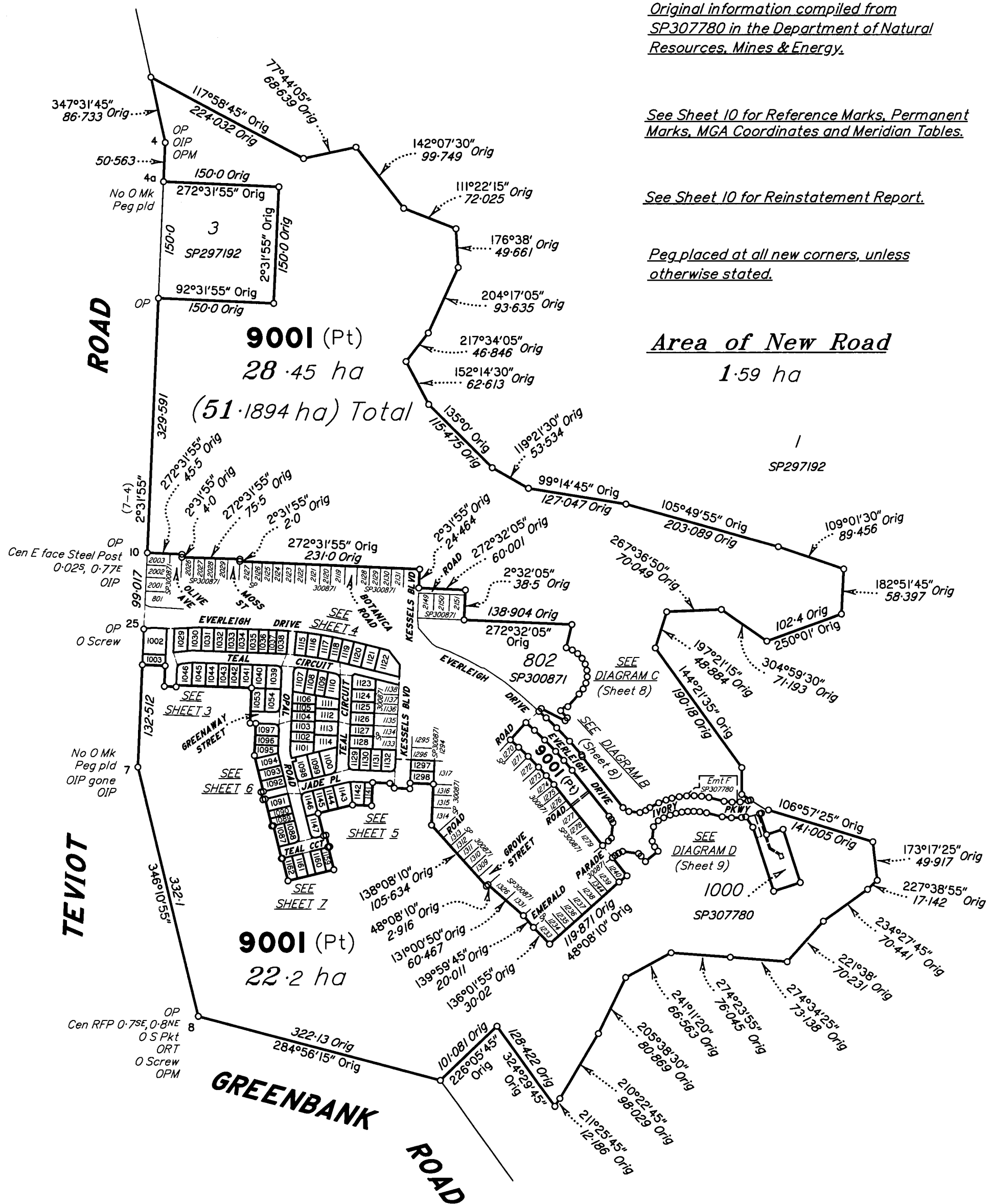
*See Sheet 10 for Reference Marks, Permanent
Marks, MGA Coordinates and Meridian Tables.*

See Sheet 10 for Reinstatement Report.

*Peg placed at all new corners, unless
otherwise stated.*



Area of New Road
1.59 ha



SAUNDERS HAVILL GROUP PTY LTD (ACN 144 972 949) hereby certify that the land comprised in this plan was surveyed by the corporation, by Brendan James HOWARD, surveying associate, for whose work the corporation accepts responsibility, under the supervision of Michael KLEINE, cadastral surveyor, and that the plan is accurate, that the said survey was performed in accordance with the Survey and Mapping Infrastructure Act 2003 and Surveyors Act 2003 and associated Regulations and Standards and that the said survey was completed on 01/07/2019

The Common Seal
of
SAUNDERS HAVILL GROUP PTY LTD
Date: 3-07-2019

Plan of Lots 1002, 1003, 1029-1046, 1053, 1054, 1087-1132, 1141-1147, 1159-1162, 1297, 1298 & 9001
Cancelling Lot 9001 on SP307780

LOCAL GOVERNMENT: **LOGAN CITY** LOCALITY: **GREENBANK**
Meridian: **MGA (Zone 56) vide PSMs** Survey Records: **No**

Scale: **1:5000**
Format: **STANDARD**

Barcode with ID: **SP300873**

7598 SP300873.DWG TBC

WARNING : Folded or Mutilated Plans will not be accepted.
Plans may be rolled.
Information may not be placed in the outer margins.

719586178

\$8665.00
26/08/2019 16:29

BE 400 NT

5. Lodged by
HWL Ebsworth Lawyers
Level 19, 480 Queen Street
Brisbane Qld 4000
Ref: JE:KKB:KWM:670125:1-3

88A

(Include address, phone number, reference, and Lodger Code)

1. Certificate of Registered Owners or Lessees.

I/We **MIRVAC QUEENSLAND PTY LIMITED**
A.C.N. 060 411 207

(Names in full)

* as Registered Owners of this land agree to this plan and dedicate the Public Use Land as shown hereon in accordance with Section 50 of the Land Title Act 1994.

~~* as Lessees of this land agree to this plan.~~

Signature of *Registered Owners *Lessees

MIRVAC QUEENSLAND PTY LIMITED A.C.N. 060 411 207
BY ITS DULY AUTHORISED ATTORNEYS

Mark John Clancy
MARK JOHN CLANCY
SENIOR DEVELOPMENT MANAGER

Adam Quinlan Forrester
ADAM QUINLAN FORRESTER
SENIOR DEVELOPMENT MANAGER

EMPLOYEES OF MIRVAC GROUP OF COMPANIES UNDER
POWER OF ATTORNEY NO. **718 795 32 8**
AND WHO HAS RECEIVED NO NOTICE OF REVOCATION OF
THAT ATTORNEY AND WHO WARRANTS THAT THEY HAVE THE
REQUISITE POWER UNDER THAT ATTORNEY.

* Rule out whichever is inapplicable

2. Planning Body Approval.

* **MINISTER FOR ECONOMIC DEVELOPMENT QUEENSLAND**
hereby approves this plan in accordance with the :

% **ECONOMIC DEVELOPMENT ACT 2012**

Dated this 21 day of August 2019
MINISTER FOR ECONOMIC DEVELOPMENT QUEENSLAND
BY ITS AUTHORISED DELEGATE

Jeanine Stone

#

J.H. Stone
% Insert applicable approving legislation.

* Insert the name of the Planning Body.

Insert designation of signatory or delegation

3. Plans with Community Management Statement :

CMS Number :

Name :

4. References :

Dept File :
Local Govt :
Surveyor : **7598**

6. Existing		Created		
Title Reference	Description	New Lots	Road	Secondary Interests
51184608	Lot 9001 on SP307780	1002, 1003, 1029-1046, 1053, 1054, 1087-1132, 1141-1147, 1159-1162, 1297, 1298 & 9001	New Rd	

ENCUMBRANCE EASEMENT ALLOCATIONS

Easement	Lots to be Encumbered
719418785 (Emt C on SP307780)	9001
719456496 (Emt F on SP307780)	9001

BENEFIT EASEMENT ALLOCATIONS

Easement	Lots Fully Benefited	Lots Partially Benefited
719454124 (Emt E on SP307780)	1002, 1003, 1029-1046, 1053, 1054, 1087-1132, 1141-1147, 1159-1162, 1297, 1298 & 9001	

Easement A on SP307760 is fully absorbed by new road.

1002, 1003, 1029-1046, 1053, 1054, 1087-1132, 1141-1147, 1159-1162, 1297, 1298 & 9001
Por 434

Lots Orig

7. Orig Grant Allocation :

8. Passed & Endorsed :

By: SAUNDERS HAVILL GROUP PTY LTD
Date: 3-07-2019 22-08-2019
Signed: *[Signature]*
Designation: **Liaison Officer**

9. Building Format Plans only.

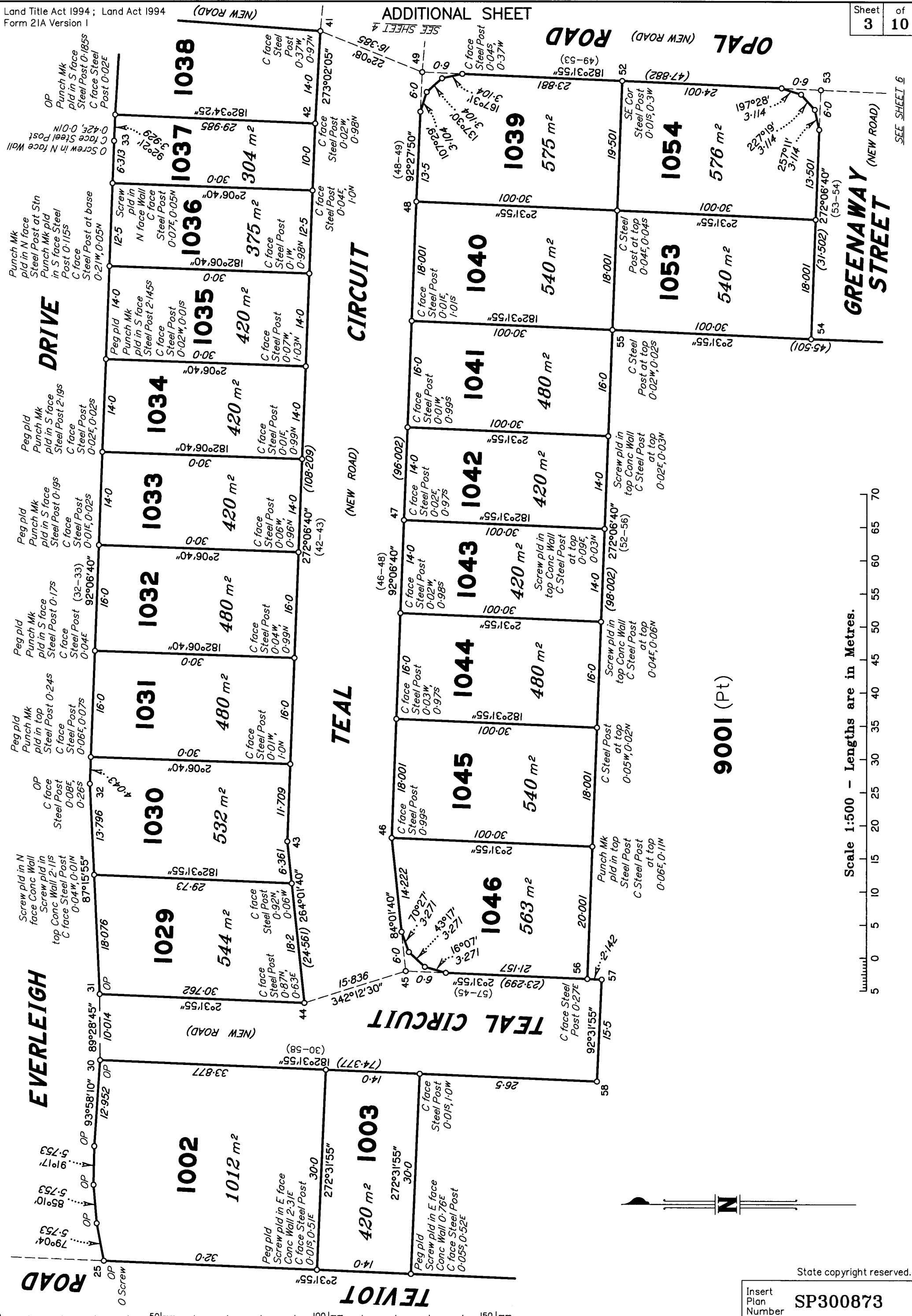
I certify that :
* As far as it is practical to determine, no part of the building shown on this plan encroaches onto adjoining lots or road;
* Part of the building shown on this plan encroaches onto adjoining * lots and road

Cadastral Surveyor/Director * Date
* delete words not required

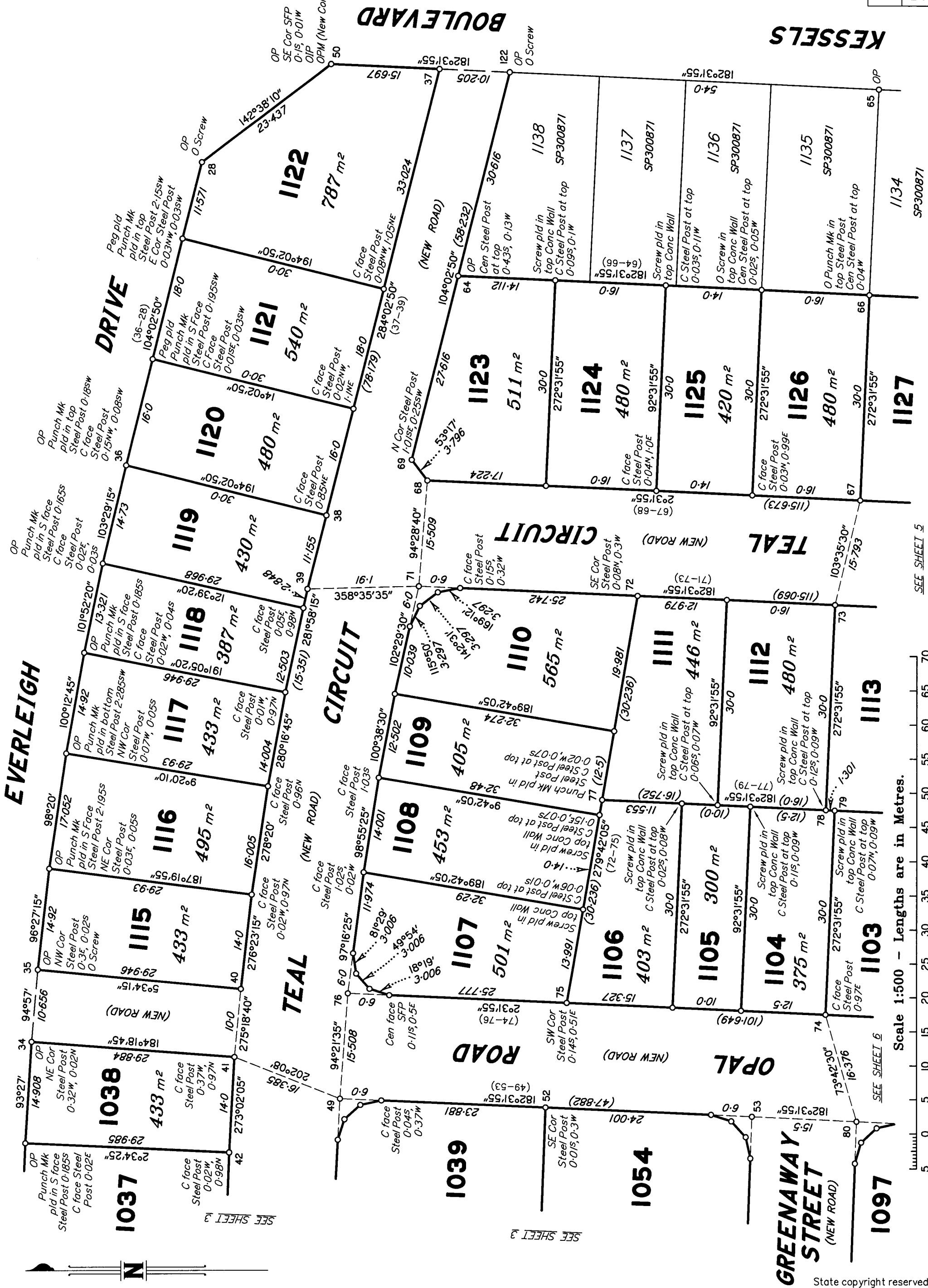
10. Lodgement Fees :

Survey Deposit \$
Lodgement \$
.....New Titles \$
Photocopy \$
Postage \$
TOTAL \$

11. Insert Plan Number **SP300873**



State copyright reserved.
Insert Plan Number **SP300873**



SEE SHEET 5

SEE SHEET 6

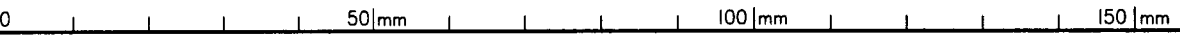
Scale 1:500 - Lengths are in Metres.

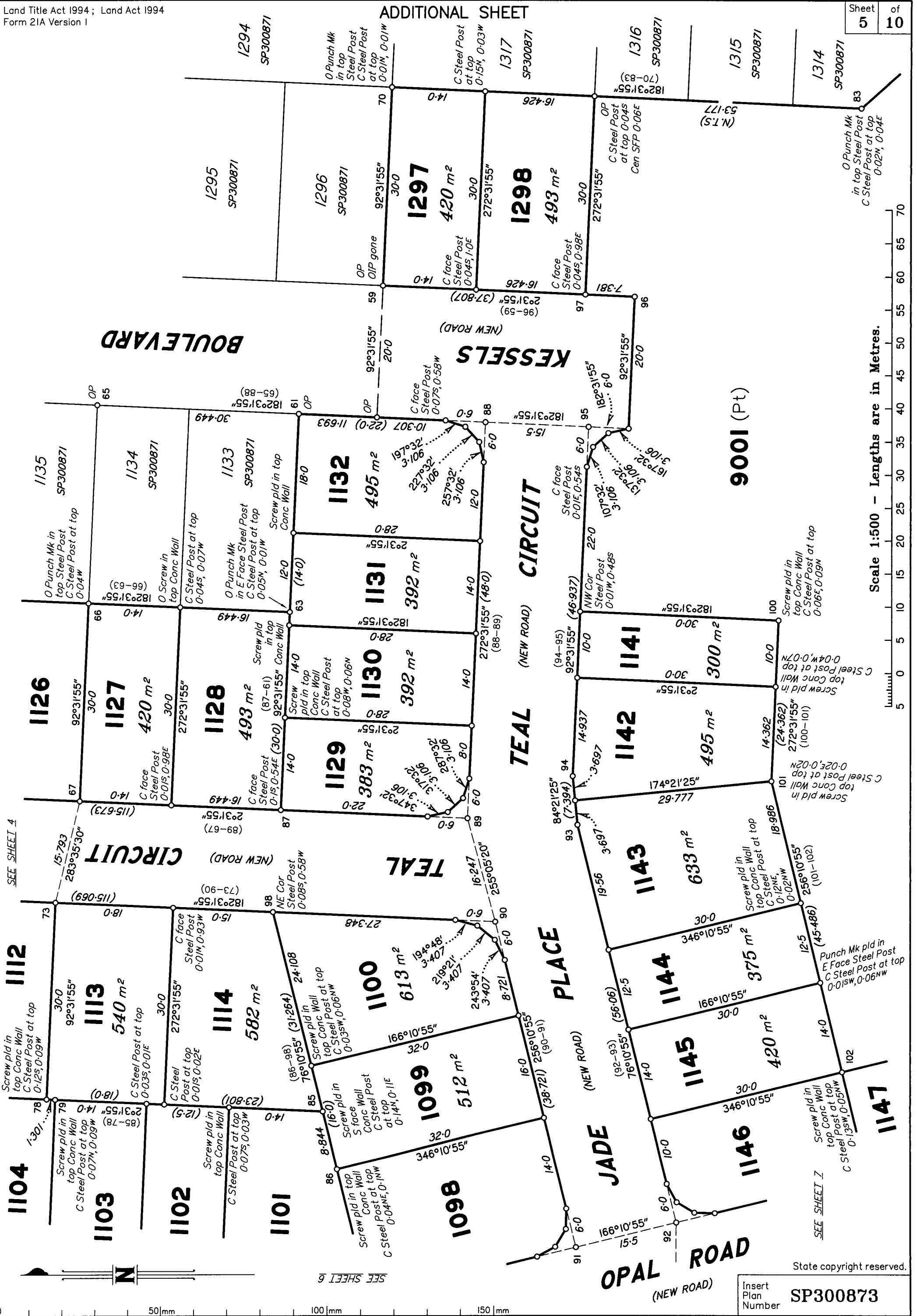
SEE SHEET 3

SEE SHEET 3

State copyright reserved.

Insert Plan Number **SP300873**





Scale 1:500 - Lengths are in Metres.

State copyright reserved.

Insert Plan Number SP300873

0 50mm 100mm 150mm

SEE SHEET 4

SEE SHEET 6

SEE SHEET 7



1041 1040

55
C Steel Post at top
0-02W, 0-02S

SEE SHEET 3

1053

1054

30-001
2-31'55" (45-501)

18-001 13-501
(31-502) 272°06'40"
(53-54)

GREENAWAY STREET (NEW ROAD)

106 92°06'40" (31-502) NE Cor Steel Post 0-03E, 0-5S

1097

451 m²

92°31'55"

30-0

1096

375 m²

30-0

1095

420 m²

76°10'55"

30-0

1094

480 m²

30-0

1093

419 m²

76°10'55"

30-0

1092

420 m²

30-0

1091

76°10'55"

30-0

ROAD

SEE SHEET 4

(NEW ROAD)

OPAL ROAD

SEE SHEET 7

OPAL ROAD (NEW ROAD)

1101

1104

1103

1102

1101

1098

1112

1113

1114

1099

1146

JADE PLACE (NEW ROAD)

SEE SHEET 5

SEE SHEET 5

SEE SHEET 5

SEE SHEET 5

SEE SHEET 5

SEE SHEET 5

SEE SHEET 5

SEE SHEET 5

SEE SHEET 5

SEE SHEET 5

SEE SHEET 5

SEE SHEET 5

SEE SHEET 5

SEE SHEET 5

SEE SHEET 5

SEE SHEET 5

SEE SHEET 5

SEE SHEET 5

SEE SHEET 5

SEE SHEET 5

SEE SHEET 5

SEE SHEET 5

SEE SHEET 5

SEE SHEET 5

SEE SHEET 5

SEE SHEET 5

SEE SHEET 5

SEE SHEET 5

SEE SHEET 5

SEE SHEET 5

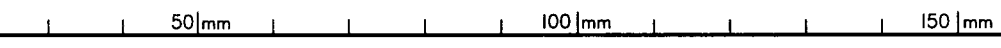
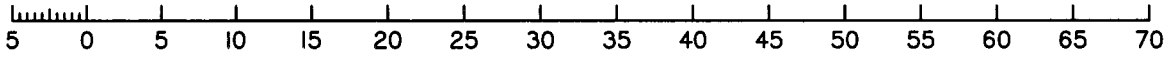
SEE SHEET 5

SEE SHEET 5

SEE SHEET 5

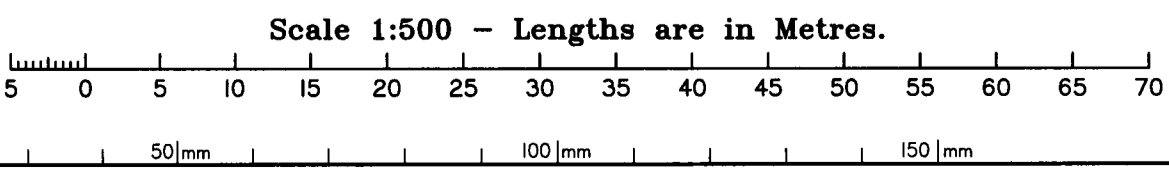
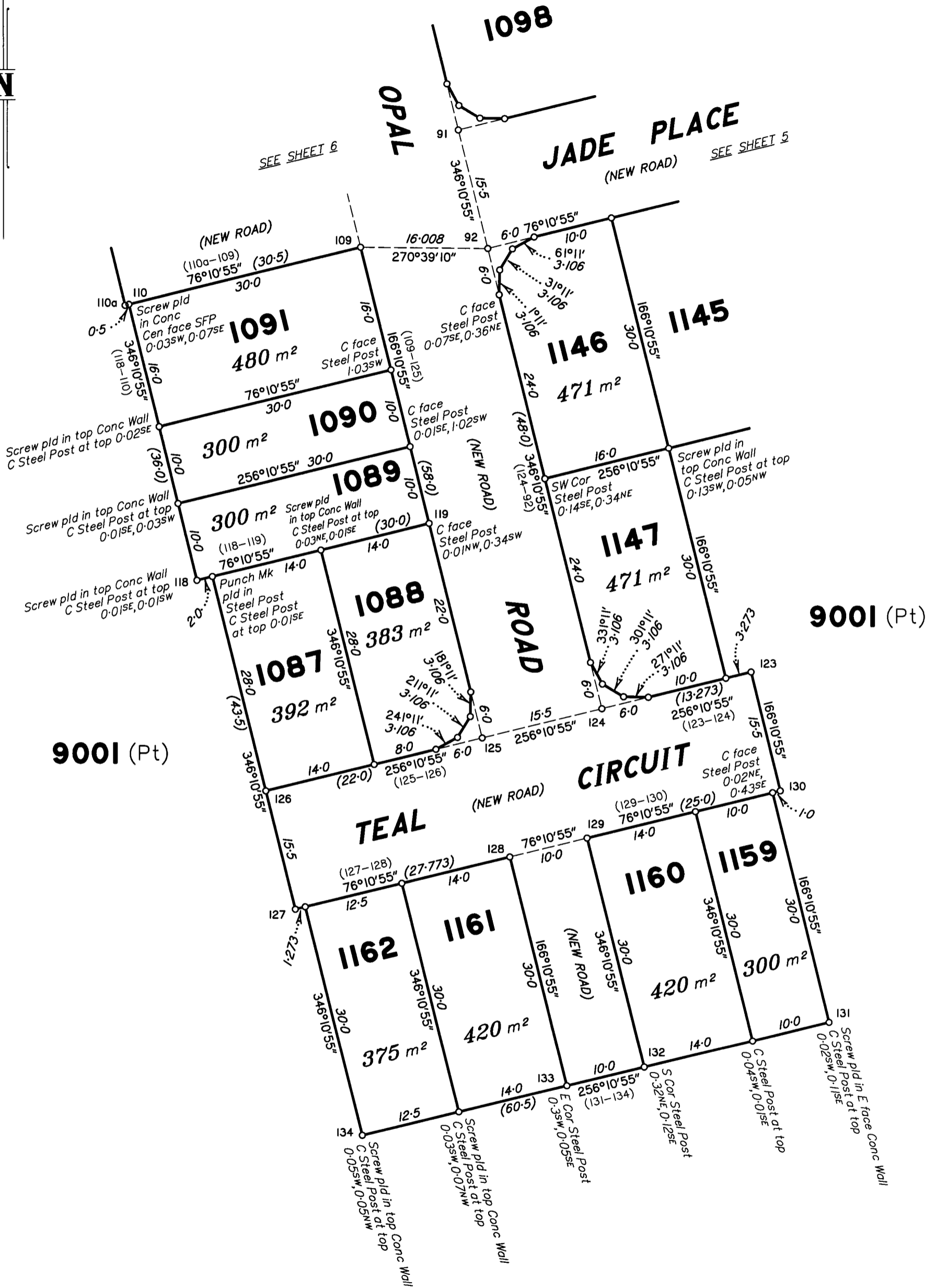
SEE SHEET 5

Scale 1:500 - Lengths are in Metres.



State copyright reserved.

Insert Plan Number **SP300873**



State copyright reserved.

Insert Plan Number **SP300873**

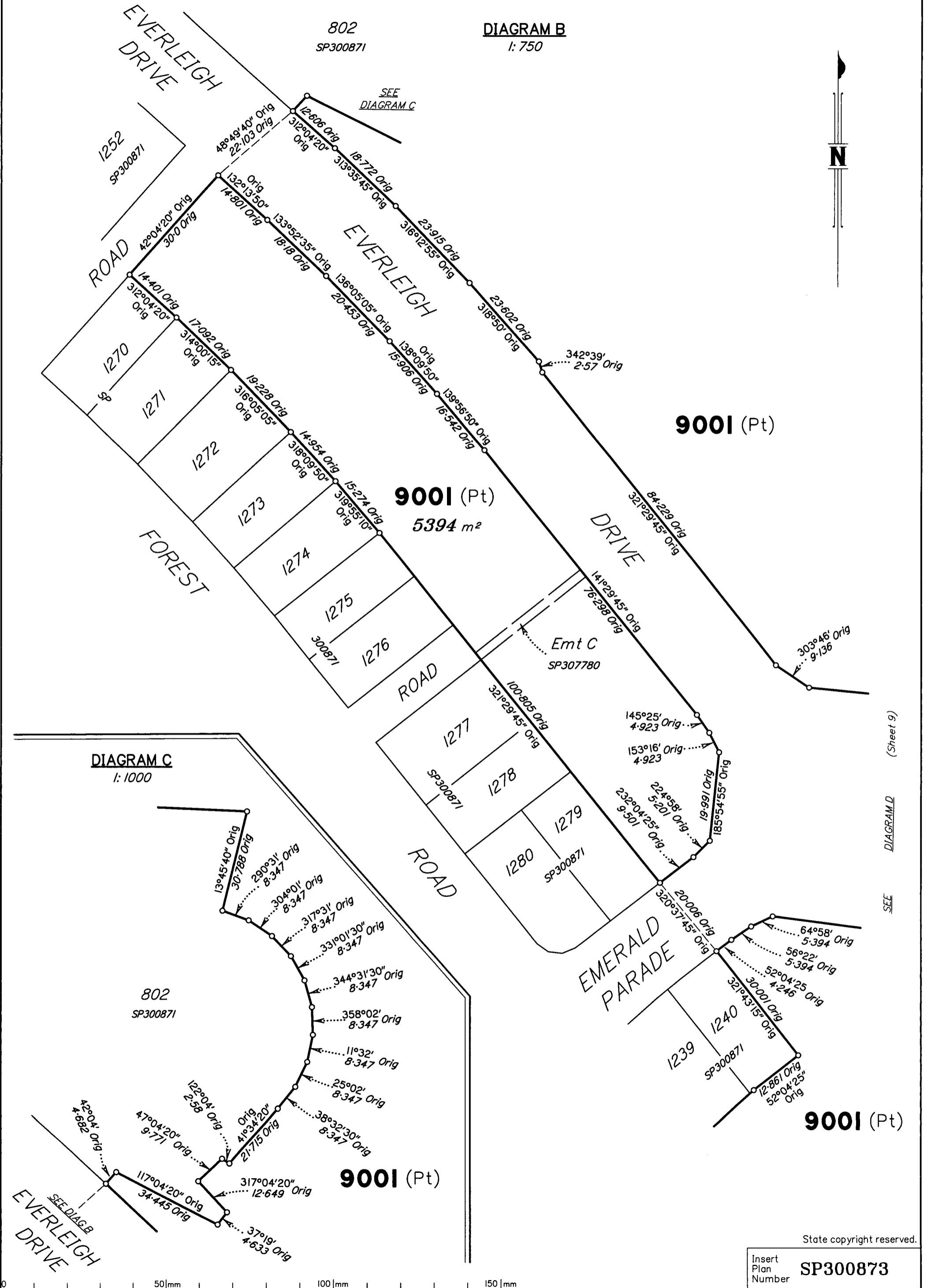


DIAGRAM B
1:750

DIAGRAM C
1:1000

802
SP300871

9001 (Pt)
5394 m²

9001 (Pt)

9001 (Pt)

State copyright reserved.

Insert Plan Number
SP300873

SEE DIAGRAM D (Sheet 9)

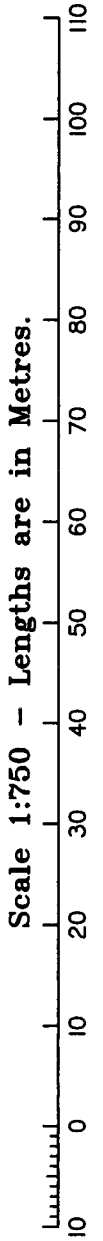
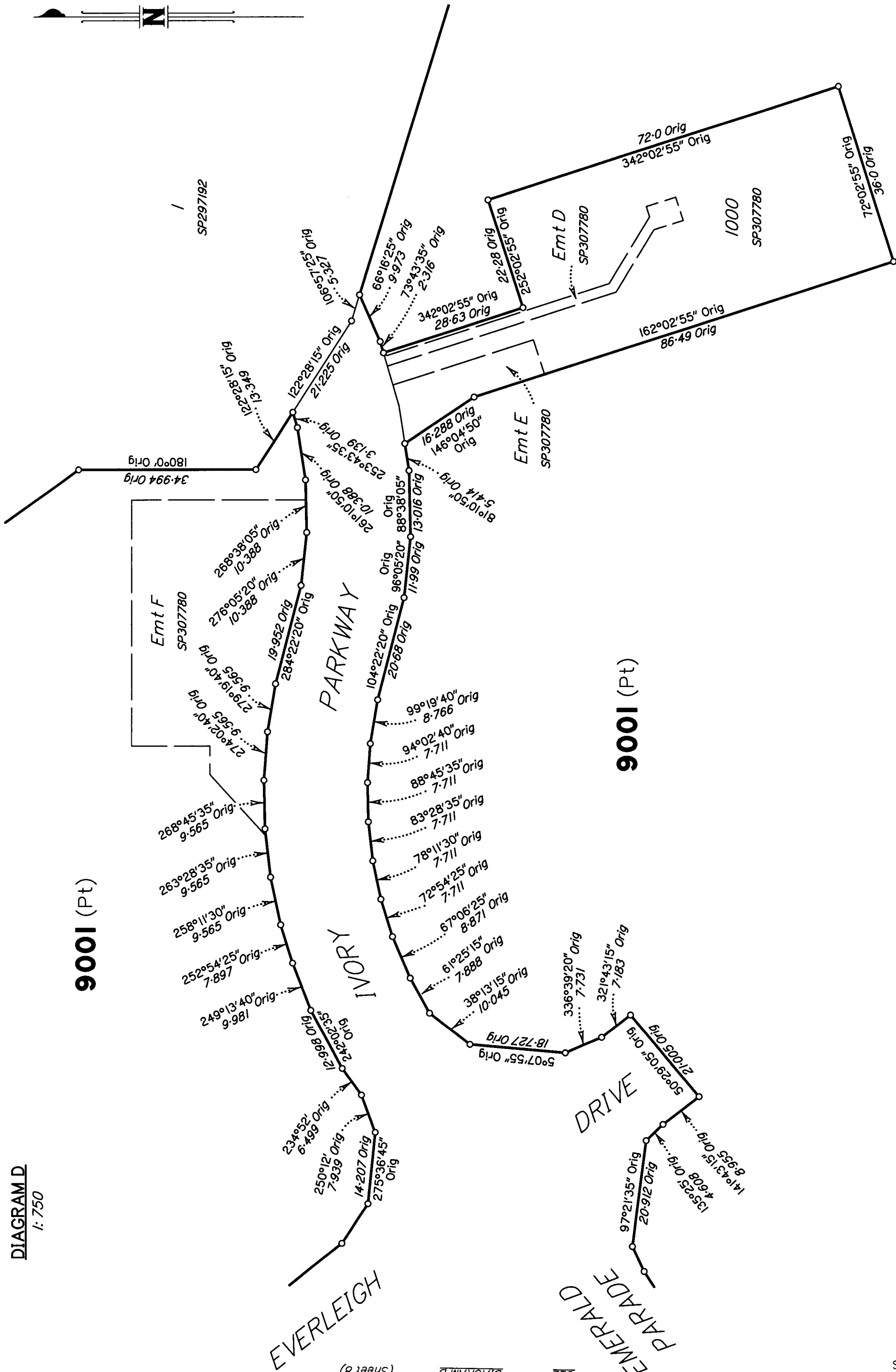


DIAGRAM D
1:750

9001 (Pt)

EVERLEIGH

(Sheet 8)

DIAGRAM B

SEE

EMERALD
PARADE
DRIVE

9001 (Pt)

State copyright reserved.

Insert
Plan
Number

SP300873

M.G.A. COORDINATES GDA-94

STATION	EASTING	NORTHING	ZONE	P.U.	LINEAGE	METHOD	REMARKS
PM38438	498 673.106	6 933 933.473	56	0-011	Datum	SCBD	
PM59822	499 450.446	6 930 390.910	56	0-011	Datum	SCBD	
PM203517	498 539.763	6 932 388.766	56	0-012	Derived	Quick Static	
PM203673	498 865.122	6 931 663.816	56	0-012	Derived	Quick Static	

Adjustment - QLD ANJ 18.07 (16-July-2018)

MERIDIAN TABLE

LINE	PLAN BEARING	MGA ZONE 56 BEARING
PM203517-PM203673	155°49'45"	155°49'46"

PERMANENT MARKS

PM	ORIGIN	BEARING	DIST	NO	TYPE
4-OPM	IS273365	0°16'30"	59.905	203517	Standard
8-OPM	SP297192	242°15'10"	62.164	61308	
45-PM		346°0'	1.241	203775	
50-OPM (New Conn)	48/IS273365	68°19'30"	25.059	203673	

REFERENCE MARKS

STN	TO	ORIGIN	BEARING	DIST
4	OIP	RP845844	268°36'	1.234
7	OIP gone	SP297192	340°09'	2.406
7	OIP (flush)	IS164023	265°01'50"	27.723
8	O Star Picket	SP297192	190°03'	13.847
8	ORT Dead (not cut)	S311565	312°28'	16.093
8	O Screw in Telstra M/H	SP297192	336°17'20"	16.226
10	OIP	IS273365	269°40'	2.034
25	O Screw in Conc	IS273365	328°06'	10.762
28	O Screw in Conc	IS273365	342°18'	6.184
30	Pin		2°56'	0.64
35	O Screw in Kerb	IS273365	354°13'	5.875
38	Pin		191°0'	0.952
38	Screw in Conc		194°09'	7.664
40	Pin		185°39'	2.753
41	Screw in Channel		163°04'	4.439
44	Pin		211°11'	1.266
44	Screw in Conc		181°03'	5.755
45	Pin		at Station	
47	Screw in Kerb		4°05'	3.84
49	Pin		at Station	
49	Screw in Kerb		52°33'	1.331
50	OIP	IS273365	83°29'	2.838
53	Screw in Kerb		130°40'	1.362
53	Pin		61°41'	1.407
58	Screw in Channel		70°57'	4.382
59	OIP gone	SP307760	191°47'	3.559
68	Screw in Conc		265°54'	3.697
69	Pin		9°14'	0.978
71	Pin		at Station	
71	Screw in Kerb		53°49'	1.994
73	Screw in Channel		85°16'	4.178
76	Pin		at Station	
76	Screw in Kerb		337°48'	0.961
80	Pin		134°43'	1.987
80	Screw in Kerb		133°12'	4.299
88	Pin		at Station	
88	Screw in Kerb		93°33'	3.24
89	Pin		at Station	
89	Screw in Conc		318°13'	4.086
90	Pin		91°32'	1.674
90	Screw in Kerb		86°14'	3.48
91	Screw in Conc		186°13'	1.091
91	Pin		306°07'	2.69
92	Pin		at Station	
92	Screw in Kerb		321°05'	1.374
94	Screw in Kerb		317°24'	5.887
95	Pin		at Station	
95	Screw in Conc		85°51'	2.401
97	Screw in Channel		249°12'	4.212
108	Screw in Conc		76°40'	3.551
109	Pin		68°25'	3.274
115	Screw in Kerb		272°30'	3.751
122	O Screw in Conc	IS273365	59°14'	2.685
124	Pin		at Station	
124	Screw in Conc		293°55'	3.115
125	Screw in Conc		189°28'	2.184
125	Pin		207°25'	2.794
127	Pin		34°22'	1.389
128	Screw in Conc		333°35'	3.698
129	Screw in Kerb		350°09'	3.839

REINSTATEMENT REPORT

- Station 4a is fixed at original distance from station 4 vide SP300871.
- All other corners are fixed by original marks and reference marks.
- The new corner marks and reference marks have been placed using control based on the coordinate framework set up on IS266917, for the purposes of standard 3.22
- Plans used: SP300871, IS273365 & IS266917.

State copyright reserved.

Insert Plan Number **SP300873**